



Ripidinelia daiboyui sp. nov. from mid-Cretaceous Kachin amber (Coleoptera: Ripiphoridae)

YAN-DA LI^{1,2,3}, DI-YING HUANG^{1,4} & CHEN-YANG CAI^{1,5,*}

¹State Key Laboratory of Palaeobiology and Stratigraphy, Nanjing Institute of Geology and Palaeontology, Chinese Academy of Sciences, Nanjing 210008, China

²Bristol Palaeobiology Group, School of Earth Sciences, University of Bristol, Life Sciences Building, Tyndall Avenue, Bristol BS8 1TQ, UK

³yldli@pku.edu.cn; <https://orcid.org/0000-0002-9439-202X>

⁴dyhuang@nigpas.ac.cn; <https://orcid.org/0000-0002-5637-4867>

⁵cycail@nigpas.ac.cn; <https://orcid.org/0000-0002-9283-8323>

*Corresponding author

Abstract

The second species of the ripidiine genus *Ripidinelia* Batelka & Prokop, *R. daiboyui* Li & Cai **sp. nov.**, is reported from mid-Cretaceous Kachin amber of northern Myanmar. *Ripidinelia daiboyui* is distinguishable from *R. burmiticola* Batelka & Prokop by having 5-5-4 tarsi. The apically dentate pretarsal claws found in *R. daiboyui* are rarely present in Ripidiinae. Together with previous studies, our discovery emphasizes the palaeodiversity of Ripiphoridae during the late Mesozoic.

Keywords: Ripidiinae, Burmese amber, Cretaceous, fossil, taxonomy

Introduction

The ripiphorid subfamily Ripidiinae is morphologically distinctive in having larviform females and strongly reduced mouthparts (Besuchet, 1956; Selander, 1957; Viana, 1971; Falin, 2003). Several ripidiines have been reported from mid-Cretaceous Kachin amber of Myanmar, including *Eodrias* Batelka & Prokop of Eorhipidiini (Batelka & Prokop, 2023), and *Protoripidius* Cai *et al.*, *Ripidinelia* Batelka & Prokop, *Cretaceoripidius* Falin & Engel, *Paleoripiphorus* Perrichot *et al.* and *Amberocula* Batelka *et al.* of Ripidiini (Falin & Engel, 2010; Batelka *et al.*, 2018; Cai *et al.*, 2018; Batelka & Prokop, 2019). These fossils have revealed several morphological features that are unknown or rarely present in their extant relatives. Among them, *Ripidinelia* was characterized by the 11-segmented uniflabellate antennae, 3-segmented maxillary

palpi, all tibiae with a single spur, and 4-4-4 tarsi (Batelka & Prokop, 2019). In this study, we report a new species of *Ripidinelia* from Kachin amber, which provides new information and clarifies some misunderstandings about the morphology of the genus.

Material and methods

The Kachin (Burmese) amber specimens studied herein (Figs 1–6) originated from amber mines near Noije Bum (26°20' N, 96°36' E), Hukawng Valley, Kachin State, northern Myanmar. The amber specimens are deposited in the Nanjing Institute of Geology and Palaeontology (NIGP), Chinese Academy of Sciences, Nanjing, China. The amber piece NIGP203880 was trimmed with a small table saw, ground with emery paper of different grit sizes, and finally polished with powder.

Photographs under incident light were taken with a Zeiss Discovery V20 stereo microscope. Widefield fluorescence images were captured with a Zeiss Axio Imager 2 light microscope combined with a fluorescence imaging system. Confocal images were obtained with a Zeiss LSM710 confocal laser scanning microscope, using the 488 nm (Argon) or 561 nm (DPSS 561-10) laser excitation line (Fu *et al.*, 2021). The original confocal data are available in the Zenodo repository (<https://doi.org/10.5281/zenodo.10864014>). Images were stacked with Helicon Focus 7.0.2, Zerene Stacker 1.04 and Adobe Photoshop CC, and were further processed in Adobe Photoshop CC to adjust brightness and contrast.

Systematic palaeontology

Order Coleoptera Linnaeus, 1758

Superfamily Tenebrionoidea Latreille, 1802

Family Ripiphoridae Gemminger, 1870

Subfamily Ripidiinae Gerstaecker, 1855

Tribe Ripidiini Gerstaecker, 1855

Genus *Ripidinelia* Batelka & Prokop, 2019

Ripidinelia daiboyui Li & Cai sp. nov.

(Figs 1–6)

Material. Holotype, NIGP203880 (male). Paratypes, NIGP203881-1 (male) and NIGP203881-2 (male).

Etymology. The specific name is dedicated to Mr. Boyu Dai, aiming to inspire his interest in fossil insects and nature in general.

Diagnosis. *Ripidinelia daiboyui* sp. nov. differs from *Ripidinelia burmiticola* Batelka & Prokop primarily in the 5-5-4 tarsi (Figs 2B, 3D, 5) (tarsi 4-4-4 in *R. burmiticola*). The interfacetal setae on the compound eyes also appear to be shorter in *R. daiboyui* (Fig. 3A, B).

Locality and horizon. Amber mine located near Noiye Bum Village, Tanai Township, Myitkyina District, Kachin State, Myanmar; unnamed horizon, mid-Cretaceous, Upper Albian to Lower Cenomanian.

Description. Body elongate, apparently weakly sclerotized; surface with dense fine short hairs.

Head with mouthparts strongly reduced. Compound eyes large, dorsally contiguous anteriorly, ventrally entirely contiguous, with moderately long interfacetal setae. Antennae 11-segmented, uniflabellate; antennomere 1 robust, elongate, slightly widening apically; antennomeres 2 and 3 submoniliform, moderately wide; antennomeres 4–10 each with a long ramus; body of antennomeres 4–10 short (weakly elongate in antennomere 10), narrower than antennomeres 2 and 3, narrowing progressively; antennomere 11 long, expanded, similar in shape to rami of previous antennomeres. Maxillary palpi 3-segmented, basally unfused.

Pronotum campaniform. Procoxae contiguous, projecting. Mesonotum with differentiation of disc and scutellum; scutellum relatively long, trapezoidal, narrowing posteriorly. Elytra separated, each with apex rounded, reaching only abdominal segment II. Mesocoxae projecting. Metanepisternum long and narrow. Metacoxae contiguous.

Legs moderately long and slender. Trochanterofemoral joints strongly oblique, though with femora well separated from coxae. Tibiae with one unequivocal apical spur (at least as seen in meso- and metatibiae). Tarsi 5-5-4; tarsomeres simple. Pretarsal claws pectinate near apex.

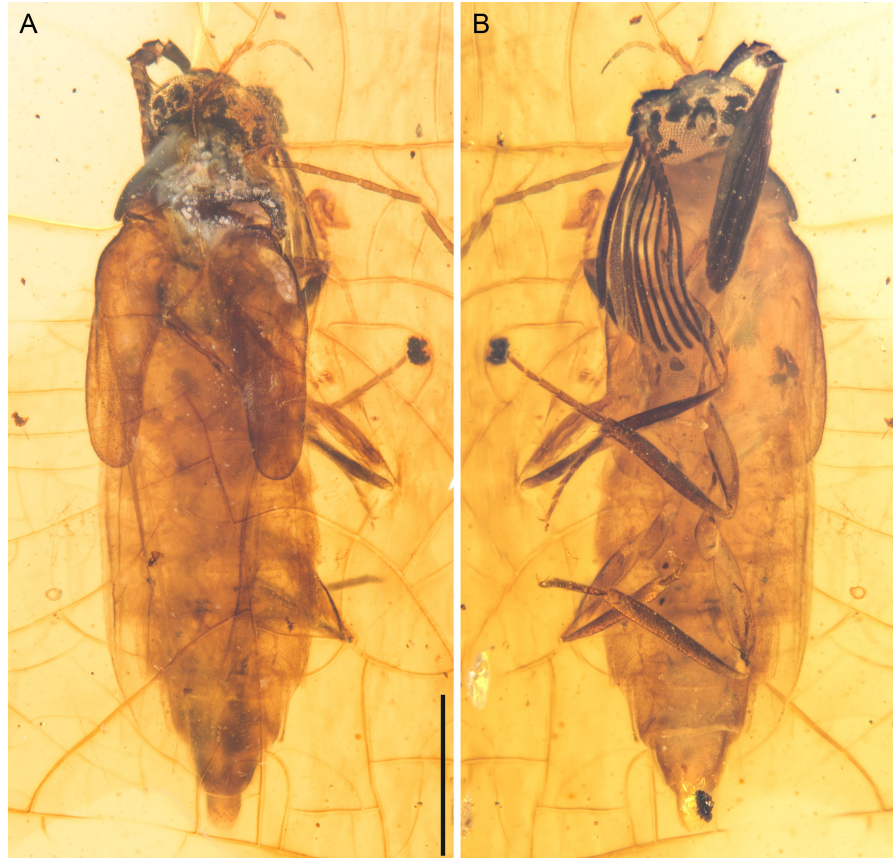


FIGURE 1. General habitus of *Ripidinelia daiboyui* Li & Cai sp. nov., holotype, NIGP203880, under incident light. **A**, Dorsal view. **B**, Ventral view. Scale bars = 1 mm.

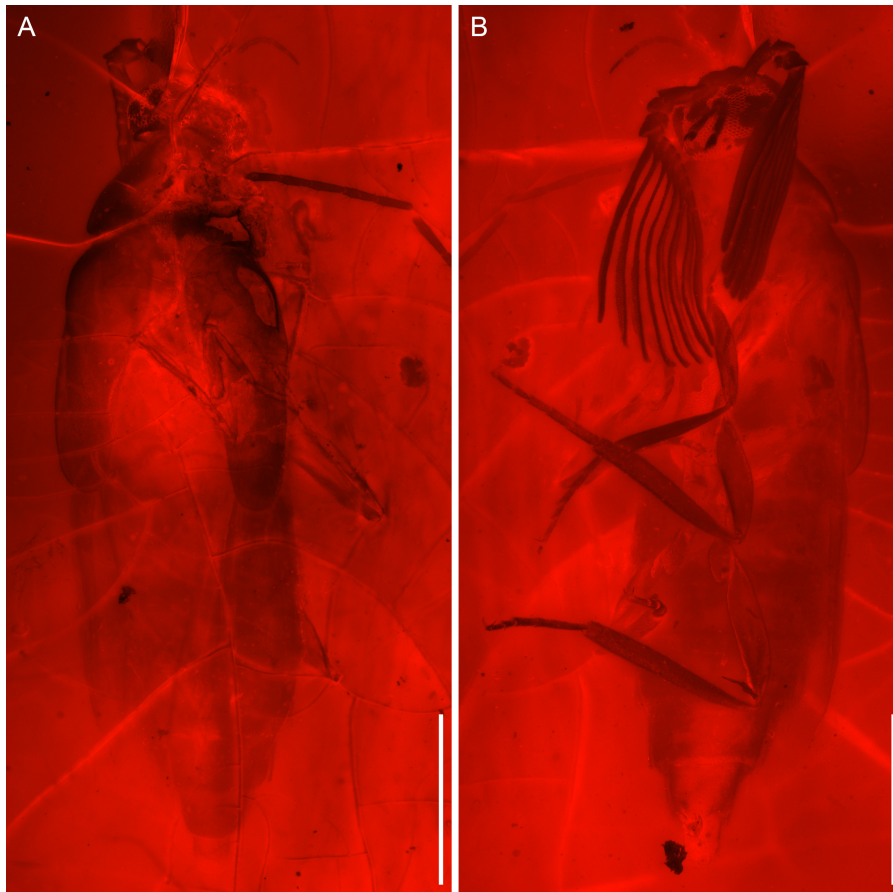


FIGURE 2. General habitus of *Ripidinelia daiboyui* Li & Cai **sp. nov.**, holotype, NIGP203880, under widefield fluorescence. **A**, Dorsal view. **B**, Ventral view. Scale bars = 1 mm.

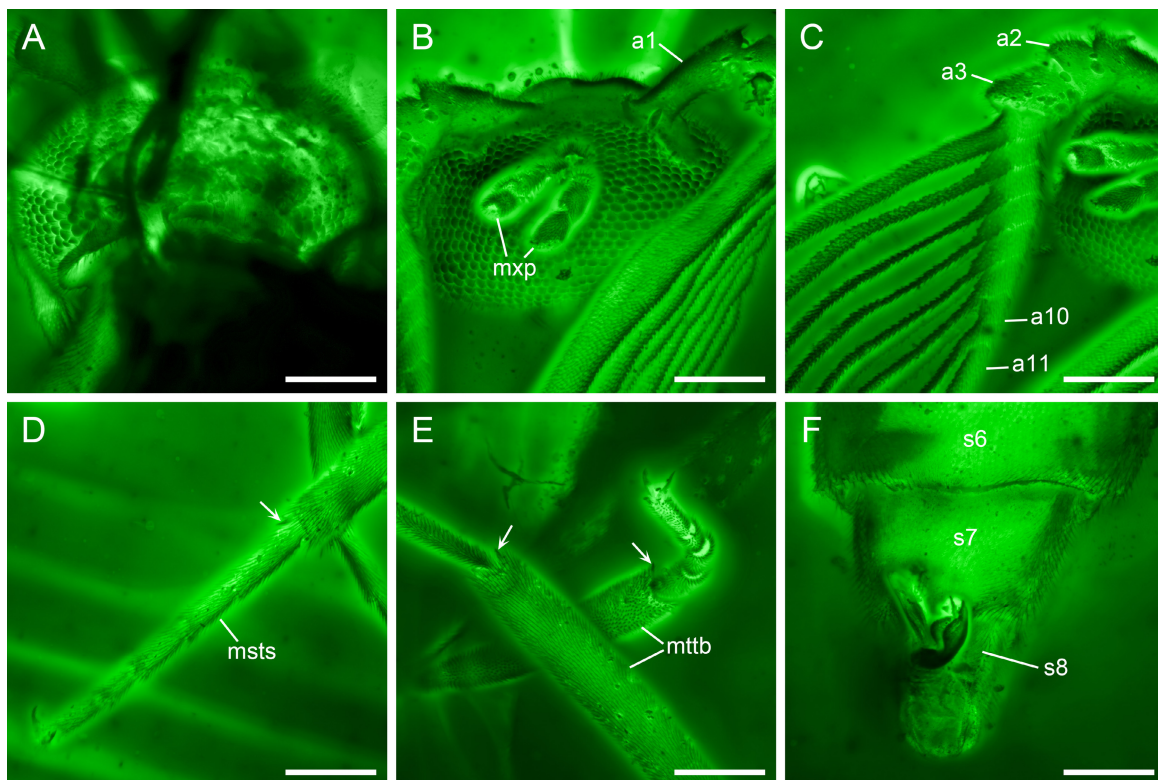


FIGURE 3. Details of *Ripidinelia daiboyui* Li & Cai **sp. nov.**, holotype, NIGP203880, under confocal microscopy. **A**, Head, dorsal view. **B**, Head, ventral view. **C**, Antenna. **D**, Mid leg, with arrow showing the tibial spur. **E**, Hind legs, with arrows showing the tibial spurs. **F**, Abdominal apex, ventral view. Abbreviations: a1–11, antennomeres 1–11; msts, mesotarsus; mttb, metatibia; mxp, maxillary palp; s6–8, abdominal sternites VI–VIII. Scale bars = 200 μ m.

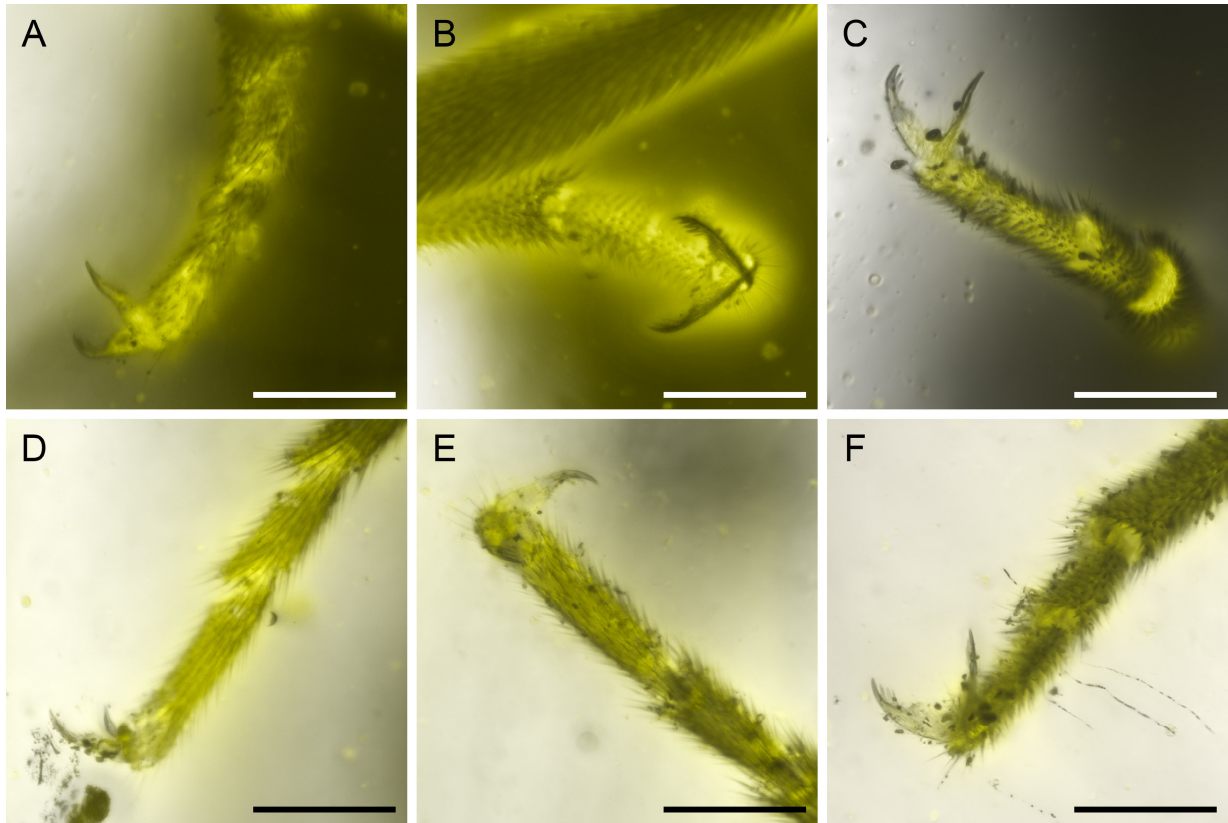


FIGURE 4. Pretarsal claws of *Ripidinelia daiboyui* Li & Cai **sp. nov.**, holotype, NIGP203880, under confocal microscopy. **A, D,** Fore legs. **B, E,** Mid legs. **C, F,** Hind legs. Scale bars = 100 μm .

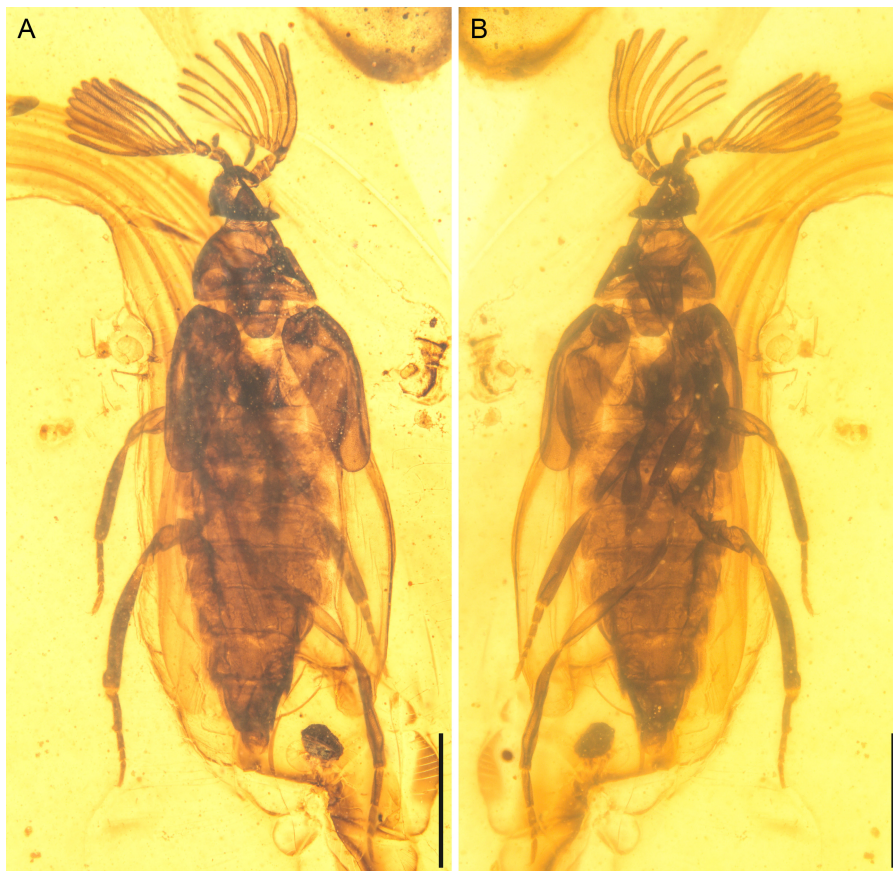


FIGURE 5. General habitus of *Ripidinelia daiboyui* Li & Cai **sp. nov.**, paratype, NIGP203881-1, under incident light. **A,** Dorsal view. **B,** Ventral view. Scale bars = 1 mm.

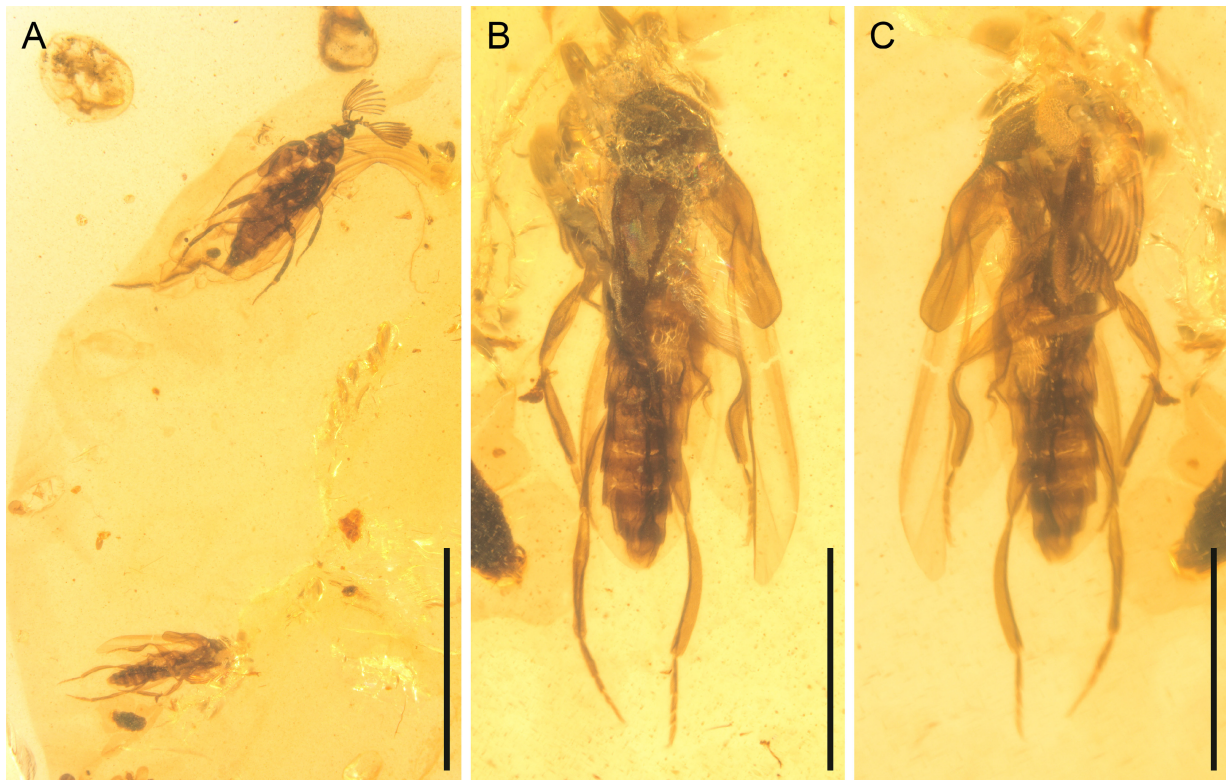


FIGURE 6. *Ripidinelia daiboyui* Li & Cai sp. nov. **A**, NIGP203881, two individuals of *Ripidinelia daiboyui* preserved together. **B–C**, *Ripidinelia daiboyui*, paratype, NIGP203881-2, dorsal (**B**) and ventral (**C**) views. Scale bars = 5 mm in **A**, 1 mm in **B**, **C**.

Abdomen with seven free ventrites (sternites II–VIII).

Measurements. NIGP203880: body length about 4.7 mm, body width about 1.3 mm. NIGP203881-1: body length about 4.3 mm, body width about 1.3 mm.

Remarks. The description and labelling of abdominal segments by Batelka & Prokop (2019) are erroneous. As they used Roman numerals for the labels in their fig. 4F, and due to the presence of IX, we suppose these labels represent the number of abdominal segments, rather than ventrites. The last segment before the genital segment was labelled as VII. In the description they also wrote “abdomen with seven visible tergites and six ventrites”. However, as shown in their fig. 4D, eight segments are clearly present before the genital segment.

Our specimens confirm that *Ripidinelia* indeed has eight abdominal segments before the genital segment. The basalmost abdominal segment is visible only dorsally as the tergite I (Fig. 5A). The segments II–VIII are normally exposed both dorsally (tergites II–VIII) and ventrally (sternites II–VIII, or ventrites 1–7) (Figs 1, 3F, 5).

Discussion

In Ripidiini, the antennae and maxillary palpi may be

variably reduced (*e.g.*, Besuchet, 1957; Falin & Engel, 2014a, 2014b; Vega-Badillo *et al.*, 2022). Among the genera of Ripidiini known as males, only *Neonephrites* Riek and *Ripidinelia* have 11-segmented uniflabellate antennae and 3-segmented maxillary palpi as seen in the new species (Riek, 1955; Batelka & Prokop, 2019).

Neonephrites shares with the new species the 5-5-4 tarsi, while the single previously described species of *Ripidinelia* has 4-4-4 tarsi. However, the new species shares with *Ripidinelia burmiticola* the presence of tibial spur (Fig. 3D, E), which is unknown in any other Ripidiini (Falin, 2003; Batelka & Prokop, 2019). In Ripidiini, compared with the presence or absence of tibial spur, the number of tarsomeres appears to have higher plasticity in both evolutionary and developmental aspects: the ground plan of tarsi in Ripidiini should be 5-5-4, but besides *Ripidinelia* the 4-4-4 tarsi are also known in (the males of) *Neopauroripidius* Falin & Engel, *Falsorhipidius* Pic, *Amberocula* and *Cretaceoripidius* (Falin & Engel, 2010, 2014b; Batelka *et al.*, 2018), which seems to involve multiple evolutionary events of character-state change; in *Rhipidioides* Riek the males have 5-5-4 tarsi, but the females have 4-4-4 tarsi (Riek, 1955). Thus, the new species is assigned to the genus *Ripidinelia*, rather than *Neonephrites*. In fact, the new species is extremely similar to *R. burmiticola* except for the different tarsal formula.

Unlike other Rhipiphoridae where the mesonotum is usually differentiated into a disc and a scutellum, the mesonotum of most genera in Ripidiini is less or not differentiated at all (Falín, 2003; Batelka *et al.*, 2011). The mesonotum of *Ripidinelia* was not described in Batelka & Prokop (2019) due to the poor state of preservation. Our specimen NIGP203881-1 shows that it has a relatively large and clearly differentiated mesonotal scutellum (Fig. 5). In *Zaragozapirhidius* Vega-Badillo *et al.*, which also has a well-developed mesonotal scutellum, the scutellum is subtriangular and widest posteriorly (Vega-Badillo *et al.*, 2022: fig. 2a, b), while in *Ripidinelia* the scutellum is subtrapezoidal and widest anteriorly (Fig. 5).

The pretarsal claws are clearly pectinate near the apex in *Ripidinelia daiboyui* **sp. nov.** (Fig. 4). *Ripidinelia burmiticola* was originally described as having simple pretarsal claws (Batelka & Prokop, 2019). However, their figures tell another possibility that *R. burmiticola* might also have similarly pectinate claws (Batelka & Prokop, 2019: fig. 3A, D), although the image resolution does not allow us to make a more conclusive judgment. Members of Ripidiinae are generally known as having simple pretarsal claws (Falín, 2003; Lawrence *et al.*, 2010). The extant *Riekella* Selander was originally described as having serrate claws (under the name *Nephrites*; see Selander, 1957) (Riek, 1955), but in the character matrix by Falín (2003) it was coded as having simple claws. Although we are unable to check which state is correct for *Riekella*, the modified pretarsal claws as seen in *Ripidinelia* would be otherwise at least extremely rare in Ripidiinae. This character, together with the previously reported tibial spur found in *Ripidinelia*, extends our knowledge on the morphological variability of the subfamily Ripidiinae.

Acknowledgements

We are grateful to Fang-Yuan Xia (Shanghai) for donating the specimen NIGP203881, Rong Huang and Yan Fang for help with confocal microscopy, and Jing-Jing Tang for help with widefield microscopy. Two reviewers provided helpful comments on the manuscript. Financial support was provided by the National Natural Science Foundation of China (41925008, 42288201, 42222201). Yan-Da Li is supported by a scholarship granted by the China Scholarship Council (202108320010) and the Bob Savage Memorial Fund of the University of Bristol.

References

- Besuchet, C. (1956) Biologie, morphologie et systématique des *Rhipidius* (Col. Rhipiphoridae). *Bulletin de la Société Entomologique Suisse*, 29, 73–144.
<https://doi.org/10.5169/seals-401265>
- Besuchet, C. (1957) Contribution à l'étude des Rhipidiinae (Col. Rhipiphoridae). *Bulletin de la Société Vaudoise des Sciences Naturelles*, 66, 341–351.
<https://doi.org/10.5169/seals-274731>
- Batelka, J. & Prokop, J. (2023) The earliest representative of Eorhipidiini (Tenebrionidea: Ripiphoridae: Ripidiinae) discovered in Cretaceous amber. *Annales Zoologici*, 73, 313–327.
<https://doi.org/10.3161/00034541ANZ2023.73.2.011>
- Batelka, J., Engel, M.S., Falín, Z.H. & Prokop, J. (2011) Two new ripidiine species in Dominican amber with evidence of aggregative behaviour of males “frozen” in the fossil record (Coleoptera: Ripiphoridae). *European Journal of Entomology*, 108, 275–286.
<https://doi.org/10.14411/eje.2011.037>
- Batelka, J., Engel, M.S. & Prokop, J. (2018) A remarkable diversity of parasitoid beetles (Ripiphoridae) in Cretaceous amber, with a summary of the Mesozoic record of Tenebrionidea. *Cretaceous Research*, 90, 296–310.
<https://doi.org/10.1016/j.cretres.2018.04.019>
- Cai, C.Y., Yin, Z.W. & Huang, D.Y. (2018) A new ripiphorid beetle from Upper Cretaceous Burmese amber sheds light on early evolution of the extant subfamily Ripidiinae (Coleoptera: Ripiphoridae). *Comptes Rendus Palevol*, 17, 351–356.
<https://doi.org/10.1016/j.crpv.2017.12.002>
- Falín, Z.H. (2003) *Phylogenetic analysis and revision of the genera and subfamilies of the Ripiphoridae (Coleoptera)*. University of Kansas, Lawrence, KS.
- Falín, Z.H. & Engel, M.S. (2010) Notes on Cretaceous Ripidiini and revised diagnoses of the Ripidiinae, Ripidiini, and Eorhipidiini (Coleoptera: Ripiphoridae). *Alavesia*, 3, 35–42.
- Falín, Z.H. & Engel, M.S. (2014a) Serendipity at the Smithsonian: The 107-year journey of *Rhipidocyrtus muiri* Falín & Engel, new genus and species (Ripidiinae, Ripidiini), from jungle beast to valid taxon. *ZooKeys*, 424, 101–116.
<https://doi.org/10.3897/zookeys.424.7853>
- Falín, Z.H. & Engel, M.S. (2014b) A new genus and two new extant species closely allied with the fossil genus *Pauroripidius* (Coleoptera: Ripiphoridae). *Journal of the Kansas Entomological Society*, 87, 333–344.
<https://doi.org/10.2317/JKES130924.1>
- Fu, Y.Z., Li, Y.D., Su, Y.T., Cai, C.Y. & Huang, D.Y. (2021) Application of confocal laser scanning microscopy to the study of amber bioinclusions. *Palaeoentomology*, 4 (3), 266–278.
<https://doi.org/10.11646/palaeoentomology.4.3.14>
- Lawrence, J.F., Falín, Z.H. & Ślipiński, A. (2010) Ripiphoridae Gemminger and Harold, 1870 (Gerstaecker, 1855). In: Leschen, R.A.B., Beutel, R.G., Lawrence, J.F. (Eds), *Handbook of Zoology, Arthropoda: Insecta, Coleoptera, beetles, Vol. 2: morphology and systematics (Elateroidea,*

- Bostrichiformia*, *Cucujiformia partim*). Walter de Gruyter, Berlin, pp. 538–548.
<https://doi.org/10.1515/9783110911213.538>
- Riek, E.F. (1955) The Australian rhipidiine parasites of cockroaches (Coleoptera: Rhipiphoridae). *Australian Journal of Zoology*, 3, 71–94.
<https://doi.org/10.1071/ZO9550071>
- Selander, R.B. (1957) The systematic position of the genus *Nephrites* and the phylogenetic relationships of the higher groups of Rhipiphoridae (Coleoptera). *Annals of the Entomological Society of America*, 50, 88–103.
<https://doi.org/10.1093/aesa/50.1.88>
- Vega-Badillo, V., Cancino-López, R.J., Martins, C.C. & Contreras-Ramos, A. (2022) A remarkable new genus and species of wedge-shaped beetle from Volcán Tacaná, Mexico (Coleoptera: Rhipiphoridae: Ripidiinae). *Biología*, 77, 479–488.
<https://doi.org/10.1007/s11756-021-00978-5>
- Viana, J.M. (1971) Micholaeminae, nueva subfamilia de Rhipiphoridae y *Micholaemus gerstaeckeri*, nuevo genero y especie de la Republica Argentina. *Revista de la Sociedad Entomologica Argentina*, 33, 69–76.