



## James Hamilton McLean: *The master of the Gastropoda*

LINDSEY T. GROVES<sup>1</sup>, DANIEL L. GEIGER<sup>2</sup>, JANN E. VENDETTI<sup>1</sup>, & EUGENE V. COAN<sup>3</sup>

<sup>1</sup>Natural History Museum of Los Angeles County, Malacology Department, 900 Exposition Blvd., Los Angeles, California 90007, U.S.A. E-mail: [lgroves@nhm.org](mailto:lgroves@nhm.org); [jvendett@nhm.org](mailto:jvendett@nhm.org)

<sup>2</sup>Santa Barbara Museum of Natural History, Department of Invertebrate Zoology, 2559 Puesta del Sol, Santa Barbara, California 93105, U.S.A. E-mail: [geiger@vetigastropoda.com](mailto:geiger@vetigastropoda.com)

<sup>3</sup>P.O. Box 420495, Summerland Key, Florida 33042, U.S.A. E-mail: [genecoan@gmail.com](mailto:genecoan@gmail.com)

### Abstract

A biography of the late James H. McLean, former Curator of Malacology at the Natural History Museum of Los Angeles County is provided. It is complemented with a full bibliography and list of 344 taxa named by him and co-authors (with type information and current status), as well as 40 patronyms.

### Biography

James Hamilton McLean was born in Detroit, Michigan, on June 17, 1936. The McLean family moved to Dobbs Ferry, New York, on the Hudson River in 1940, a short train ride and subway ride away from the American Museum of Natural History (AMNH). His brother Hugh recalled that, “AMNH became the place of choice to go to whenever we could get someone to take us. Those visits opened our eyes to the variety and possibilities of what was out there, waiting for us to discover and collect.” From an early age James seemed destined to have a career at a museum (Figs 1–2). In his teens, he raised tropical fish and collected shells and other forms of marine life, and it became readily apparent to his family that a career in biology was ahead (Fig. 3). A summer marine biology course in 1955 under notable biologist Gilbert Voss at the University of Miami further whetted his career aspirations.

He graduated from Wesleyan University, in Middletown, Connecticut, in 1958 with an A.B. in biology and proceeded to earn his Ph.D. in biology at Stanford University under the guidance of world-renowned malacologist and paleontologist A. Myra Keen in 1966 (Fig. 5), two years *after* his arrival at the Los Angeles County Museum of Natural History (LACM: Fig. 6), now known as the Natural History Museum of Los Angeles County. A memo from then LACM Director Dr. Herbert Friedman dated September 10<sup>th</sup>, 1964, stated, “James H. McLean, an expert on the marine mollusks of the West Coast, has joined the staff of the Los Angeles County Museum as a curator of Invertebrate Zoology.” His dissertation, *West American prosobranch Gastropoda: Superfamilies Patellacea, Pleurotomariacea, and Fissurellacea*, was finally awarded in June 1966. James used his prowess for SCUBA diving and collecting to build the LACM Malacology collection into its status as one of the largest mollusk collections in the world. He traveled to and collected from numerous destinations worldwide including the west coast of the Americas from Alaska to Chile, the Caribbean, including Jamaica, Cuba, the Bahamas, and Venezuela, and the Indo-Pacific including Sri Lanka, Japan, Australia, Tanzania, Cook Islands, Indonesia, Hawai‘i on shelling tours and with colleagues (Figs 7–8). James was also instrumental in acquiring many orphaned private and professional collections for LACM Malacology, most notably portions of the vast Alan Hancock Foundation collection from the University of Southern California in 1985. He was an active member of numerous malacological organizations including the American Malacological Union/Society (President, hosting 55<sup>th</sup> annual meeting, 1989), the Western Society of Malacologists (President, 1974), the San Diego Shell Club, and was a long-time sponsor of the Conchological Club of Southern California, which met at LACM. James was also a member of the Council of Systematic Malacologists and served on the editorial boards of many professional journals including *The*

*Veliger*, *The Nautilus*, and the *American Malacological Bulletin*. He authored or co-authored over 140 peer-reviewed papers, meeting abstracts, and popular papers. His list of co-authors is a veritable who's who of prominent malacologists and paleontologists of the past and present, including George P. Kanakoff, Buzz Owen, Roy Poorman, Helen DuShane, Ian McT. Cowan, Jim Nybakken, Vera Fretter, Philippe Bouchet, Anders Warén, David Lindberg, Rae Baxter, Gerhard Haszprunar, Richard Kilburn, Carole Hickman (Fig. 12), Stefan Kiel, Bill Emerson (Fig. 14), Eugene Coan (Fig. 13), Daniel Geiger, Jerry Harasewych, Serge Gofas, and Ángel Valdés. James and co-authors described 344 molluscan taxa over 53 years (from 1959 through 2012), mostly from the eastern Pacific Ocean. In recognition of his vast knowledge and appreciation of mollusks, colleagues have named at least 37 taxa for him including gastropods, chitons, bivalves, and even a scaphopod.



**FIGURES 1–6.** James H. McLean, the early years. 1. ~1940 showing early interest in zoology. 2. ~1950. In high school with pumpkins. 3. 1958. High school year book photo. 4. Late 1960's, in his LACM office. 5. 1969, at American Malacological Union meeting, Pacific Division, Asilomar. From left to right: J.T. Smith, E.V. Coan, A.M. Keen, R. Robertson, J.H. McLean. 6. 1964 hiring photograph at LACM.

While Curator, James also mentored graduate and undergraduate students including naticid specialist Louie Marinovich (University of Southern California) who went on to a career with the U.S. Geological Survey, and haliotid specialist Daniel Geiger (also USC) who is now Curator of Malacology at the Santa Barbara Museum of Natural History. Jim (as he preferred) was actively interested in the next generation of malacologists and initiated contact with new students, such as Geiger at the WCM 1992 in Siena (Geiger pers. comm.). He was very patient with students and their first attempts at scientific writing, instilling a solid foundation in that craft. Once he pronounced a manuscript ready to be submitted, the greatest hurdle had been overcome.

Volunteers were also an important aspect of the Malacology Department during Dr. McLean's tenure, and processed hundreds of sediment samples ("grunge" according to James) from all over the world. Some key volunteers included the late Edith Abbott, Elizabeth Veal, Yvonne Albi, and Bertram Draper. Notably, James and staff member Patrick LaFollette pioneered the use of computers for collection management, databasing, and word processing at LACM in the mid 1980's. Much of the format and contents of the early database known as "MALCAT" was transferred to successive data management systems and is still in use today.





**FIGURES 7–11.** James H. McLean, in the field and in the museum. 7. ~1969. San Miguel Island, California. 8. 1985. Thailand, with *Chicoreus ramosus*. 9. ~1981 in LACM office. 10. ~1989 in LACM office. 11. ~1993 in LACM collection.

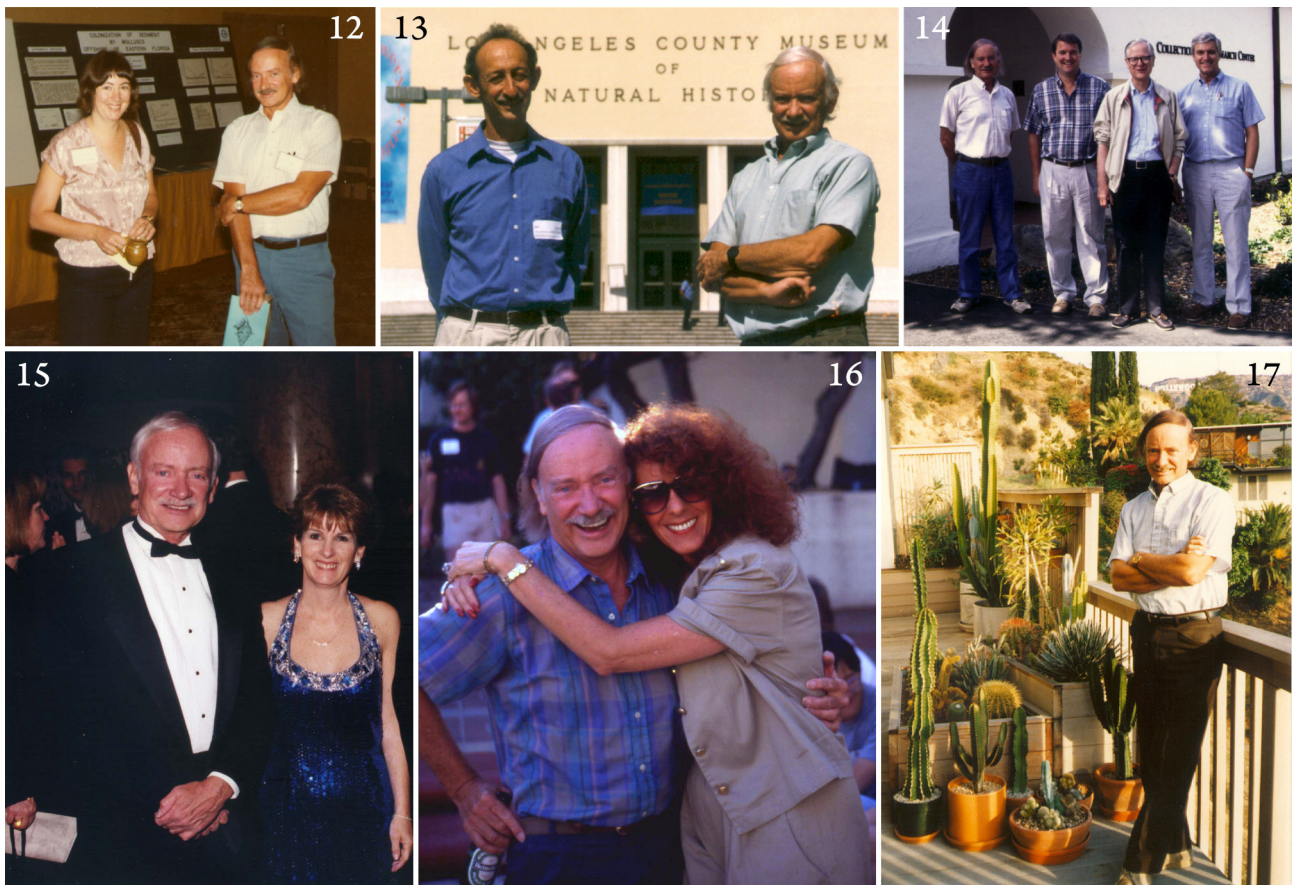
James was interested in all shelled gastropods, especially the Archaeogastropoda (now Patellogastropoda + Vetigastropoda) but developed a special fondness for the Turridae in the late 1960's and early 1970's, and published several major treatments including the extensive turrid section in the second edition of A. Myra Keen's *Sea Shells of Tropical West America* (1971). His documentation of the unique predatory feeding behavior of the chiton *Placiphorella* in 1962 was a first. When hydrothermal vent faunas were discovered in 1977, James was recruited to study newly discovered limpet-like mollusks. His efforts resulted in the descriptions of 60+ new superfamilies, families, subfamilies, families, genera, subgenera, species, and subspecies in 16 papers. James' crowning achievement was a 1990 book on the suprageneric classification of the trochacean gastropods with long-time colleague Carole Hickman as senior author, for which he received an award from LACM. Later in his career, he put much effort into monographs on the liotioideans, colloniids, and the shelled gastropods of the northeast Pacific.

In addition, he published regional guides to the shelled gastropods of southern California. First, the *Marine Shells of Southern California*, which was published in 1969, with a second edition in 1978. He also contributed the gastropod sections to both the *Taxonomic Atlas of the Benthic Fauna of the Santa Maria Basin and Western Santa Barbara Channels* as well as *Light's Manual*. Those remain the current identification guides to the marine snails of the area.

Jim was an opinionated with a sharp sense of humor, once one got to know him. While he referred to fossils as "very dead shells," the copy of Wenz' *Handbuch der Paläozoologie* was on long-term loan from the USC library right by his desk. He had an encyclopedic knowledge of the gastropod literature. Any obscure question was met with a moment of reflection, followed by a quiet turn to the bookshelves, where he would pull out just the right tome.

In March of 2001, James retired from LACM after 37 years, but remained a fixture on the Museum's 3<sup>rd</sup> floor adjacent to the malacology collections usually until late in the evening (Figs 4, 9, 10). This also included weekends and holidays. His status of Curator Emeritus was held until December of 2013 when he was given Research Associate standing and his office was reassigned to other staff. James then worked on his research at home but still managed to visit the museum several times a week throughout most of 2014. Unfortunately, in

late 2014, deteriorating health required hospitalization and recuperation at the home of long-time friend Pat LaFollette in Cathedral City, California, and ultimately 24/7 care at a nearby facility. In May of 2015, James was moved to a full-time care facility in South Windsor, Connecticut, to be near family where he spent his remaining days.



**FIGURES 12–17.** James H. McLean, with colleagues and at large. 12. 1984, American Malacological Union meeting, Norfolk, VA, with Carole Hickman. 13. 1994, in front of LACM with Gene Coan. 14. 1991, at Santa Barbara Museum of Natural History. From left to right: J.H. McLean, H.W. Chaney, W.K. Emerson, J. Houbrick. 15. 1999, at LACM fundraising gala (Dino Ball). 16. 1991, Berkeley, AMS/WSM meeting, with A. Joffee. 17. 1994, at his home in the Hollywood Hills, with his euphorbs.

On Friday, November 11<sup>th</sup>, 2016, the malacological world lost one of its great taxonomists as James passed away with brothers Hugh and Arthur and other family members at his side. In June of 2017, the Western Society of Malacologists held its 50<sup>th</sup> meeting in Los Angeles during which Jim was honored as the namesake of the LACM Malacology collection and remembered by a dedication delivered by Lindsey Groves. Donations in honor and recognition of James were made to the *James H. McLean Student Grant in Collections-Based Research*, which funds one to two student proposals per year (see the WSM website for details: <http://westernsocietymalacology.org/grants/james-h-mclean-student-grant-in-collections-based-research/>). Unfortunately, James was not able to personally realize his goal of a monograph of the shelled gastropods of the eastern Pacific from central Baja, California to Arctic Alaska. However, the collection of papers herein on varied gastropod taxa have been contributed by numerous authors and edited by Daniel Geiger (Santa Barbara Museum of Natural History), Jann Vendetti (LACM Malacology), and Lindsey T. Groves (LACM Malacology) to honor Jim’s work and legacy.





**FIGURES 18–24.** Some patronyms for James H. McLean. 18. *Sinezona macleani* Geiger, 2006. Holotype USNM 289748. Scale bar shell = 1 mm, scale bar protoconch = 100  $\mu$ m. 19. *Pterynotus (Purpurellus) macleani* Emerson & d'Attilio, 1969. Holotype LACM 1230. 29.0 mm. 20. *Coralliophila macleani* Shasky, 1970. Holotype LACM 1411. 17.6 mm. 21. *Limatula macleani* Bernard, 1988. Holotype LACM 2336. 14.1 mm. 22. *Macron mcleani* Vermeij, 1998. Holotype LACM 2812. 23.1 mm. 23. *Drillia macleani* Tucker, 1992 (*nomen novum* for *D. sinuosa* McLean, 1971 *non* Bellardi, 1877). Holotype LACM 1491. 20.3 mm. 24. *Americoliva mcleani* Petuch & Myers, 2014. Holotype LACM 3269. 23.0 mm.

On a more personal level from the senior author, Jim was a devout liberal (“Friends don’t let friends vote Republican”), a Rolling Stones fan, and collector of succulents from all over the world, especially the euphorbiaceans (Fig. 17). He also enjoyed riding his bicycle along the beach in Santa Monica and Venice, loved hard candy, regularly went to the movies, and was a great dancer according to Anne Joffe [Sanibel, Florida] (pers. comm. 2018: Fig. 16). I was introduced to Jim at the May, 1986 meeting of the Conchological Club of Southern California by colleague and friend Dick Squires (LACMIP Research Associate) who stressed that “he’s a good person to know.” I was in the throes of my master’s degree work at that time and I visited the Malacology and Invertebrate Paleontology sections at LACM numerous times to compare fossil mollusks with Recent specimens and even had some in-depth faunal discussions with Jim. He delighted in telling me that my fossil specimens were “very dead shells.” Little did I know that barely two years later I would be working with him in Malacology. It has been an amazing 30+ years, and I’m still here at LACM. Thank you Jim!

## Acknowledgements

MANY thanks to James’ brother Hugh McLean, South Windsor, Connecticut for generously providing information pertaining to James’ formative years, which influenced his decision to become a marine biologist. Gene Coan (Summerland Key, Florida), Pat LaFollette (LACM Associate), Richard Squires (LACMIP Associate), and Henry Chaney (Santa Barbara Museum of Natural History) have all provided anecdotal information over the years. The late Cathy McNassor (LACM archives) allowed access to notes about Jim in the museum archives. Thanks to Terri Togiai (former office manager LACM) for the tip regarding Jim’s penchant for The Rolling Stones!

## Publications by James H. McLean, including new species

One hundred and forty-eight publications are credited to Jim and his numerous co-authors (88 peer-reviewed papers and serials, 45 meeting abstracts & posters, and 15 popular publications, book reviews, & obituaries). Topics include new species descriptions, biogeography, ecology, systematics, and even molluscan paleontology. These publications are listed with the date when known by the categories listed above. New taxa described by McLean and co-authors are noted following each publication in order of description within each paper. Systematic notes are included for taxa with status changes/current usage changes. † Denotes fossil taxa.

## Peer-reviewed papers & serials:

- McLean, J.H. (1959) A new marine gastropod from west Mexico. *The Nautilus*, 73, 9–11 [July].  
*Decipifus gracilis*
- McLean, J.H. (1960) *Batillaria cumingi*, introduced cerithiid in Elkhorn Slough. *The Veliger*, 2, 61–63 [January 1].
- McLean, J.H. (1961) Marine mollusks from Los Angeles Bay, Gulf of California. *Transactions of the San Diego Society of Natural History*, 12, 449–476 [August 15].
- McLean, J.H. (1962) Sublittoral ecology of kelp beds of the open coast area near Carmel, California. *Biological Bulletin*, 122, 95–114 [February]
- McLean, J.H. (1962) Manometric measurements of respiratory activity in *Tegula funebris*. *The Veliger*, 4, 191–193 [April 1].
- McLean, J.H. (1962) Feeding behaviour of the chiton *Placiphorella*. *Proceedings of the Malacological Society of London*, 35, 23–26 [April 1].
- McLean, J.H. (1964) New species of Recent and fossil west American aspidobranch gastropods. *The Veliger*, 7, 129–133 [October 1].  
*Lirularia bicostata*  
*Solariella micraulax*  
*Tegula (Agathistoma) mendella* [= *Tegula (Agathistoma) eiseni* Jordan, 1936, according to McLean (1964: 133)]  
†*Macrarena diegensis*  
†*Homalopoma berryi* (fossil type material, Recent species)

- McLean, J.H. (1964) *Tegula eiseni* E.K. Jordan, 1936 prior to *Tegula mendella* McLean, 1964. *The Veliger*, 7, 133 [October 1].
- McLean, J.H. (1966) A new genus of Fissurellidae and a new name for a misunderstood species of west American *Diodora*. *Los Angeles County Museum of Natural History Contributions in Science*, 100, 1–8, [May 5].  
*Scelidotoma*  
*Diodora arnoldi*
- Kanakoff, G.P. & McLean, J.H. (1966) Recognition of the cancellariid genus *Neadmete* Habe, 1961, in the west American fauna, with description of a new species from the Lomita Marl of Los Angeles County, California. *Los Angeles County Museum of Natural History Contributions in Science*, 116, 1–6 [December 28].  
†*Neadmete sutherlandi*
- McLean, J.H. (1967) West American species of *Lucapinella*. *The Veliger*, 9, 349–352 [January 1].  
*Lucapinella eleanorae*
- McLean, J.H. (1967) West American Scissurellidae. *The Veliger*, 9, 404–410 [April 1].
- McLean, J.H. (1967) Note on the radula of *Mitromica* Berry, 1958. *The Veliger*, 10, 58 [July 1].
- DuShane, H. & McLean, J.H. (1968) Three new epitoniid gastropods from the Panamic Province. *Los Angeles County Museum of Natural History Contributions in Science*. 145, 1–6 [June 14].  
*Epitonium (Asperiscala) huffmani* [= *Epitonium huffmani*, according to WoRMS]  
*Epitonium (Epitonium) shyorum* [= *Epitonium shyorum*, according to WoRMS]  
*Amaea (Scalina) tehuancarum* [= *Amaea tehuancarum*, according to WoRMS]
- Cowan, I.McT. & McLean, J.H. (1969) A new species of *Puncturella* (*Cranopsis*) from the northeastern Pacific. *The Veliger*, 11, 105–108 [October 1].  
*Puncturella (Cranopsis) decorata* [= *Cranopsis decorata*, according to WoRMS]
- McLean, J.H. (1970) New species of Panamic marine gastropods. *The Veliger*, 12, 310–315 [January 1].  
*Arene guttata*  
*Arene echinata*  
*Vermicularia frisbeyae*  
*Turritella willetti*  
*Natica brunneolinea*  
*Natica sigillata*  
*Cantharus (Gemophos) berryi* [= *Cantharus berryi*, according to WoRMS]  
*Fusinus allyni*
- McLean, J.H. (1970) Descriptions of a new genus and eight new species of eastern Pacific Fissurellidae, with notes on other species. *The Veliger*, 12, 362–367 [January 1].  
*Tugali chilensis*  
*Nesta galapagensis*  
*Emarginula angusta*  
*Emarginula dictya*  
*Rimula astricta*  
*Diodora punctifissa*  
*Fissurella (Cremides) decemcostata* [= *Fissurella decemcostata*, according to WoRMS]  
*Leurolepas*  
*Leurolepas roseola*
- McLean, J.H. (1970) Notes on the deep water calliostomas of the Panamic Province, with descriptions of six new species. *The Veliger*, 12, 421–426 [April 1].  
*Calliostoma gordanum*  
*Calliostoma sanjaimense*  
*Calliostoma veleroae*  
*Calliostoma keenae*  
*Calliostoma jacquelinae*  
*Calliostoma santacruzianum*
- McLean, J.H. & Poorman, L.H. (1970) Reinstatement of the turrid genus *Bellaspira* Conrad, 1868 (Mollusca: Gastropoda) with a review of the known species. *Los Angeles County Museum of Natural History Contributions in Science*, 189, 1–11 [May 4].  
*Bellaspira margaritensis*  
*Bellaspira acclivicosta*  
*Bellaspira clarionensis*
- McLean, J.H. (1969 [1970]) New species of tropical eastern Pacific Gastropoda. *Malacological Review*, 2, 115–130, [May 8, 1970].

*Haliotis (Padollus) roberti* [= *Haliotis dalli roberti*, according to Geiger & Owen, 2012: 82.]  
*Scissurella (Anatoma) epicharis* [= *Anatoma keenae*, according to Geiger (2012: 942–948)]  
*Scissurella (Anatoma) keenae* [= *Anatoma keenae*, according to Geiger (2012: 942–948)]  
*Fissurella (Cylpidella) morrisoni* [= *Fissurella morrisoni*, according to WoRMS]  
*Fissurella (Cremides) deroyae* [= *Fissurella deroyae*, according to WoRMS]  
*Mirachelus galapagensis*  
*Tegula (Agathistoma) bergeroni* [= *Tegula bergeroni*, according to WoRMS]  
*Tegula (Agathistoma) corteziana* [= *Tegula corteziana*, according to WoRMS]  
*Tegula (Agathistoma) felipensis* [= *Tegula felipensis*, according to WoRMS]  
*Tegula (Agathistoma) picta* [= *Tegula picta*, according to WoRMS]  
*Tegula (Agathistoma) verdispira* [= *Tegula verdispira*, according to WoRMS]  
*Tegula (Agathistoma) verrucosa* [= *Tegula verrucosa*, according to WoRMS]  
*Arene adusta*  
*Arene ferruginosa*  
*Arene stellata*  
*Macrarene lepidotera*  
*Tricolia diantha* [= *Eulithidium diantha*, according to WoRMS]  
*Littorina albicarinata* [= *Echinolittorina albicarinata*, according to WoRMS]  
*Turritella parkeri*  
*Niso emersoni*  
*Nassarius shaskyi*

McLean, J.H. & Emerson, W.K. (1970) *Calotrophon*, a New World muricid genus (Gastropoda: Muricacea). *The Veliger*, 13, 57–62 [July 1].

McLean, J.H. (1970) New eastern Pacific subgenera of *Turbo* Linnaeus, 1758 and *Astraea* Röding, 1798. *The Veliger*, 13, 71–72 [July 1].

(*Chaenoturbo*)

(*Megastraea*) [= *Megastraea*, according to WoRMS]

McLean, J.H. (1970) On the authorship of Part V of Eschscholtz's "Zoologischer Atlas," 1833. *The Veliger*, 13, 112 [July 1].

Owen, B., McLean, J.H., & Meyer, R.J. (1971) Hybridization in the eastern Pacific abalones (*Haliotis*). *Bulletin of the Los Angeles County Museum of Natural History, Science*, 9, 1–37 [January 15].

McLean, J.H. (1971) Order Archaeogastropoda (up to Neritacea). In: Keen, A.M. (Ed.), *Sea Shells of Tropical West America: Marine Mollusks from Baja California to Peru, Second Edition*. Stanford University Press, Stanford, California, pp. 307–363 [March].

McLean, J.H. (1971) Family Turridae. In: Keen, A.M. (Ed.), *Sea Shells of Tropical West America: Marine Mollusks from Baja California to Peru, Second Edition*. Stanford University Press, Stanford, California, pp. 686–766 [March].

McLean, J.H. & Poorman, R. (1971) New species of tropical eastern Pacific Turridae. *The Veliger*, 14, 89–113 [July 1].

*Calliclava jaliscoensis*

*Calliclava lucida*

*Calliclava rhodina*

*Calliclava subtilis*

*Elaeocyma amplinucis*

*Elaeocyma melichroa*

*Kylix contracta*

*Kylix woodringi*

*Leptadrillia firmichorda*

*Syntomodrillia vitrea*

*Agladrillia badia*

*Agladrillia flucticulus*

*Agladrillia gorgonensis*

*Drillia (Drillia) cunningghamae* [= *Clathrodrillia berryi*, according to WoRMS]

*Drillia (Drillia) inornata* [= *Clathrodrillia inornata*, according to WoRMS]

*Drillia (Drillia) sinuosa* [Junior homonym of *D. sinuosa* Bellardi, 1877, renamed *D. macleani* Tucker, 1992]

*Drillia (Drillia) tumida* [= *Clathrodrillia tumida*, according to WoRMS]

*Drillia (Drillia) valida* [= *Clathrodrillia valida*, according to WoRMS]

*Drillia (Clathrodrillia) berryi* [= *Clathrodrillia berryi*, according to WoRMS]

*Cerodrillia asymmetrica*



*Splendrillia academica*  
*Splendrillia arga*  
*Splendrillia bratcherae*  
*Fusiturricula andrei*  
*Crassispira (Dallspira) martiae* [= *Crassispira martiae*, according to WoRMS]  
*Crassispira (Striospira) coracina* [= *Crassispira coracina*, according to WoRMS]  
*Crassispira (Monilispira) currani* [= *Crassispira currani*, according to WoRMS]  
*Lioglyphostoma rectilabrum*  
*Maesiella maesae*  
*Carinodrillia lachrymosa*  
*Compsodrillia gracilis*  
*Compsodrillia olssoni*  
*Compsodrillia opaca*  
*Compsodrillia undatichorda*  
*Borsonella abrupta*  
*Borsonella galapagana*  
*Cymakra baileyi*  
*Cymakra granata*  
*Clathurella maryae* [= *Etrema maryae*, according to WoRMS]  
*Glyphostoma (Glyphostoma) pustulosa*  
*Glyphostoma (Glyphostoma) scobina*  
*Euclathurella acclivicallis*  
*Acmaturris ampla*  
*Thelecythara dushanae*  
*Kurtzia elenensis*  
*Kurtzia humboldti*  
*Pyrgocythara angulosa*  
*Daphnella gemmulifera*  
*Daphnella retusa*  
*Rimosodaphnella deroyae*  
*Philbertia shaskyi*  
*Kermia informa*  
*Vepracula tornipila*

McLean, J.H. (1971) A revised classification of the family Turridae, with the proposal of new subfamilies, genera, and subgenera from the eastern Pacific. *The Veliger*, 14, 114–130 [July 1].

*Calliclava*  
*Pyrgospira*  
*(Glossispira)* [= *Glossispira*, according to WoRMS]  
*(Crassiclava)* [= *Crassiclava*, according to WoRMS]  
*(Gibbaspira)* [= *Gibbaspira*, according to WoRMS]  
*Doxospira*  
*Maesiella*  
 Strictispirinae [= Strictispiridae, according to WoRMS]  
*Strictispira*  
*Cleospira*  
 Zonulispirinae [= Pseudomelatomidae, according to WoRMS]  
*(Nymphispira)* [= *Nymphispira*, according to WoRMS]  
*(Borsonellopsis)* [= *Borsonellopsis*, according to WoRMS]  
 Clathurellinae [= Clathurellidae, according to WoRMS]  
*Bellacythara*  
*Truncadaphne*  
*Microdaphne*

McLean, J.H. (1979) A new monoplacophoran limpet from the continental shelf off southern California. *Natural History Museum of Los Angeles County Contributions in Science*, 307, 1–19 [March 16].

*(Laevipilina)* [= *Laevipilina*, according to WoRMS]  
*Vema (Laevipilina) hyalina* [= *Laevipilina hyalina*, according to WoRMS]

- McLean, J.H. & Nybakken, J.W. (1979) On the growth stages of *Conus fergusonii* Sowerby, 1873, the reinstatement of *Conus xanthicus* Dall, 1910, and a new species of *Conus* from the Galápagos Islands. *The Veliger*, 22, 135–144 [October 1].  
*Conus kohni* [= *Kohniconus kohni*, according to Tucker & Tenorio (2009: 146)]
- McLean, J.H. (1980) The Galapagos Rift limpet: Relevance to understanding the evolution of a significant Paleozoic-Mesozoic radiation. *Haliotis, Société Française de Malacologie*, 10, 170 [date unknown].
- McLean, J.H. (1981) The Galapagos Rift limpet *Neomphalus*: Relevance to understanding the evolution of a major Paleozoic-Mesozoic radiation. *Malacologia*, 21, 291–336 [June].  
Neomphaloidea [as Neomphalacea]  
Neomphalidae [raised to superfamily by Bouchet *et al.* (2017) [as Neomphalacea; includes Peltospiroidea McLean, 1989 (as Peltospiracea)] [includes Cyathermiidae McLean (1990), as synonymized by Bouchet *et al.* (2017)]  
*Neomphalus*  
*Neomphalus fretterae*
- Fretter, V., Graham, A., & McLean, J.H. (1981) The anatomy of the Galapagos Rift limpet, *Neomphalus fretterae*. *Malacologia*, 21, 337–361 [June].
- Lindberg, D.R. & McLean, J.H. (1981) Tropical eastern Pacific limpets of the family Acmaeidae (Mollusca, Archaeogastropoda): Generic criteria and descriptions of six new species from the mainland and the Galápagos Islands. *Proceedings of the California Academy of Sciences*, 42, 323–339 [June 24].  
*Notoacmea ubiquita* [= *Tectura ubiquita*, according to WoRMS]  
*Notoacmea pumila* [= *Tectura pumila*, according to WoRMS]  
*Notoacmea rothi* [= *Lottia rothi*, according to WoRMS]  
*Notoacmea immaculata* [= *Lottia immaculata*, according to WoRMS]  
*Lottia mimica*  
*Lottia smithi*
- McLean, J.H. & Andrade, H. (1982) Large archibenthal gastropods of central Chile: Collections from an expedition of the R/V *Anton Bruun* and the Chilean shrimp fishery. *Natural History Museum of Los Angeles County Contributions in Science*, 342, 1–20 [December 13].  
*Diodora codoceoae*  
*Calliostoma (Otukaia) delli* [= *Maurea delli* or *Otukaia delli*, according to WoRMS]  
*Trophon bahamondei*  
*Columbarium tomicici*  
*Aeneator castillai*  
*Cancellaria (Crawfordina) stuardoi* [= *Merica stuardoi*, according to WoRMS]
- Bouchet, P., McLean, J.H., & Warén, A. (1983) Monoplacophorans in the North Atlantic. *Oceanologica Acta*, 6, 117–118 [date unknown].
- McLean, J.H. (1984) New species of northeast Pacific archaeogastropods. *The Veliger*, 26, 233–239 [January 3].  
*Anatoma baxteri* [= *Anatoma lyra* (Berry, 1947), according to Geiger (2012: 964–972)]  
*Puncturella rothi*  
*Margarites hickmanae*  
*Calliostoma titanium* [= *Akoya platinum* Dall, 1890, according to Tuskes this volume]  
*Calliostoma bernardi* [= *Akoya platinum* Dall, 1890, according to Tuskes this volume]  
*Lirularia discors*  
*Halystylus genecoani*  
*Homalopoma draperi*
- McLean, J.H. (1984) A case for derivation of the Fissurellidae from the Bellerophontacea. *Malacologia*, 25, 3–20 [March 29].
- McLean, J.H. (1984) Shell reduction and loss in fissurellids: A review of genera and species in the *Fissurellidea* group. *American Malacological Bulletin*, 2, 21–34 [February].
- McLean, J.H. (1984) *Agathodon nortoni*, new species: Living member of a Lower Cretaceous trochid genus. *The Nautilus*, 98, 121–123 [July 27].  
*Agathodon nortoni* [= *Clypeostoma nortoni*, according to WoRMS]
- Baxter, R. & McLean, J.H. (1984) The genera *Moelleria* Jeffreys, 1865, and *Spiromoellaria* gen. nov. in the North Pacific, with description of a new species of *Spiromoellaria* (Gastropoda: Turbinidae). *The Veliger*, 27, 219–226 [October 5].  
*Spiromoellaria*  
*Spiromoellaria kachemakensis*
- McLean, J.H. (1984) Systematics of *Fissurella* in the Peruvian and Magellanic faunal provinces (Gastropoda: Prosobranchia). *Natural History Museum of Los Angeles County Contributions in Science*, 354, 1–70 [October 29].
- McLean, J.H. (1985) Two new northeastern Pacific gastropods of the families Lepetidae and Seguenziidae. *The Veliger*, 27,

- 336–338 [January 2].  
*Iothia lindbergi*  
*Sequenzia quinni*
- McLean, J.H. (1985) The archaeogastropod family Addisoniidae Dall, 1882: Life habitat and review of species. *The Veliger*, 28, 99–108 [July 1].  
*Addisonia brophyi*
- McLean, J.H. 1985. Preliminary report on the limpets at hydrothermal vents. *Biological Society of Washington Bulletin*, 6, 159–166 [date unknown].
- McLean, J.H. & Kilburn, R.N. (1986) Propodial elaboration in southern African and Indian Ocean Fissurellidae (Mollusca: Prosobranchia) with descriptions of two new genera and one new species. *Natural History Museum of Los Angeles County Contributions in Science*, 379, 1–12 [September 3].  
*Medusafissurella*  
*Dendrofissurella*  
*Amblychilepas platyactis*
- McLean, J.H. & Quinn, J.F., Jr. (1987) *Cataegis*, new genus of three new species from the continental slope (Trochidae: Cataeginae new subfamily). *The Nautilus*, 101, 111–116 [July 31].  
Cataeginae  
*Cataegis*  
*Cataegis toreuta* [= *Cataegis finkli* Petuch, 1987, according to WoRMS]  
*Cataegis meroglypta* [= *Kanoia meroglypta*, according to WoRMS]  
*Cataegis celebesensis*
- McLean, J.H. & Haszprunar, G. (1987) Pyropeltidae, a new family of cocculiniform limpets from hydrothermal vents. *The Veliger*, 30, 196–205 [October 1].  
Pyropeltidae  
*Pyropelta*  
*Pyropelta musaica*  
*Pyropelta corymba*
- McLean, J.H. (1987) Taxonomic descriptions of cocculinid limpets (Mollusca, Archaeogastropoda): Two new species and three rediscovered species. *Zoologica Scripta*, 16, 325–333 [October].  
*Cocculina cowani*  
*Cocculina baxteri*
- McLean, J.H. (1988) Two new species of Liotiinae (Gastropoda: Turbinidae) from the Philippines. *The Veliger*, 30, 408–411 [April 1].  
*Bathyliotina glassi*  
*Pseudoliotina springsteeni*
- McLean, J.H. (1988) Three new limpets of the family Pseudococculinidae from abyssal depths (Mollusca, Archaeogastropoda). *Zoologica Scripta*, 17, 155–160 [April].  
*Amphiplica venezuelensis*  
*Amphiplica knudseni*  
*Yaquinabyssia careyi*
- McLean, J.H. (1988) New archaeogastropod limpets from hydrothermal vents; Superfamily Lepetodrilacea. I. Systematic descriptions. *Philosophical Transactions of the Royal Society of London*, B319, 1–31 [May 4].  
Lepetodrilacea  
Lepetodrilidae [includes Gorgoleptidae McLean, 1988 and Clypeosectidae McLean, 1989, according to Bouchet *et al.* (2017)]  
*Lepetodrilus*  
*Lepetodrilus pustulosus*  
*Lepetodrilus elevatus*  
*Lepetodrilus elevatus galriftensis*  
*Lepetodrilus ovalis*  
*Lepetodrilus cristatus*  
*Lepetodrilus guaymasensis*  
*Lepetodrilus fucensis*  
Gorgoleptidae  
*Gorgoleptis*  
*Gorgoleptis emarginatus*



- Gorgolettis spiralis*  
*Gorgolettis patulus*
- McLean, J.H. (1988) New archaeogastropod limpet families in the hydrothermal vent community. *Malacological Review*, Supplement 4, 85–87 [date unknown].
- McLean, J.H., Absalão, R.S., & Cruz, R.L. dos S. (1988) A new species of *Macrarena* (Turbinidae: Liotiinae) from Brazil. *The Nautilus*, 102, 99–101 [August 29].  
*Macrarena digitata*
- McLean, J.H. (1989) New archaeogastropod limpets from hydrothermal vents: New family Peltospiridae, new superfamily Peltospiracea. *Zoologica Scripta*, 18, 49–66 [January].  
Peltospiracea  
Peltospiridae  
*Peltospira*  
*Peltospira operculata*  
*Peltospira delicata*  
*Nodopelta*  
*Nodopelta heminoda*  
*Nodopelta subnoda*  
*Rhynchopelta*  
*Rhynchopelta concentrica*  
*Echinopelta*  
*Echinopelta fistulosa*  
*Hirtopelta*  
*Hirtopelta hirta*
- McLean, J.H. (1989) New slit-limpets (Scissurellacea and Fissurellacea) from hydrothermal vents. Part 1. Systematic descriptions and comparisons based on shell and radular characters. *Natural History Museum of Los Angeles County Contributions in Science*, 407, 1–29 [August 14].  
Anatominae [raised to family by Geiger (2012:732)]  
Temnocinclinae  
*Temnocinclis*  
*Temnocinclis euripes*  
*Temnozaga*  
*Temnozaga parilis*  
Sutilizoninae [raised to family and includes Temnocinclinae McLean, 1989, according to Bouchet *et al.* (2017)]  
*Sultizona*  
*Sultizona theca*  
Clypeosectidae  
*Clypeosectus*  
*Clypeosectus delectus*  
*Clypeosectus curvus*  
*Pseudorimula*  
*Pseudorimula marianae*
- McLean, J.H. (1990) A new genus and species of neomphalid limpet from the Mariana Vents with a review of current understanding of relationships among Neomphalacea and Peltospiracea. *The Nautilus*, 104, 77–86 [October 11].  
Cyathermiidae [= Neomphalidae, as synonymized by Bouchet *et al.* (2017)]  
*Symmetromphalus*  
*Symmetromphalus regularis*
- McLean, J.H. (1990) Neolepetopsidae, a new docoglossate limpet family from hydrothermal vents and its relevance to patello-gastropod evolution. *Journal of the Zoological Society of London*, 222, 485–528 [October 12].  
Lepetopsina [included in Patellogastropoda, according to Bouchet *et al.* (2017)]  
Lepetopsacea [included in Lottioidea, according to Bouchet *et al.* (2017)]  
Neolepetopsidae  
*Neolepetopsis*  
*Neolepetopsis gordensis*  
*Neolepetopsis densata*  
*Neolepetopsis verruca*  
*Neolepetopsis occulta*

*Eulepetopsis*  
*Eulepetopsis vitrea*  
*Paralepetopsis*  
*Paralepetopsis floridensis*  
Lepetopsidae

Hickman, C.S. & McLean, J.H. (1990) Systematic revision and suprageneric classification of trochacean gastropods. *Natural History Museum of Los Angeles County Science Series*, 35, vi + 1–169 [November 22].

Moelleriinae  
Prisogasterinae  
Gabrieloninae  
Calliotropini [synonymized into Eucyclidae by Bouchet *et al.* (2017)]  
Gazini [synonymized into Margaritidae by Bouchet *et al.* (2017)]  
Lirulariinae [synonymized into Umboniinae by Bouchet *et al.* (2017)]  
Monileini [synonymized into Umboniinae by Bouchet *et al.* (2017)]  
Bankiviini [synonymized into Umboniinae by Bouchet *et al.* (2017)]

McLean, J.H. (1991) Four new pseudococculinid limpets collected by the deep-submersible *Alvin* in the eastern Pacific. *The Veliger*, 34, 38–47, [January 2].

*Punctabyssia*  
*Punctabyssia tibbettsi*  
(*Dictyabyssia*) [= *Caymanabyssia*, according to WoRMS]  
*Caymanabyssia* (*Dictyabyssia*) *fosteri* [= *Caymanabyssia fosteri*, according to WoRMS]  
*Caymanabyssia* (*Dictyabyssia*) *vandoverae* [= *Caymanabyssia vandoverae*, according to WoRMS]  
(*Gordabyssia*) [= *Amphiplica*, according to WoRMS]  
*Amphiplica* (*Gordabyssia*) *gordensis* [= *Amphiplica gordensis*, according to WoRMS]

Emerson, W.K. & McLean, J.H. (1992) *Buridrillia deroyorum*, a new species from the Galapagos Islands, a living record of a Neogene turrid genus. *The Nautilus*, 106, 39–42 [February 27].

*Buridrillia deroyorum*

McLean, J.H. (1992) A new species of *Pseudorimula* (Fissurellacea: Clypeosectidae) from hydrothermal vents of the mid-Atlantic Ridge. *The Nautilus*, 106, 115–118 [August 21].

*Pseudorimula midatlantica*

McLean, J.H. (1992) Systematic review of the family Choristellidae (Archaeogastropoda: Lepetellacea) with descriptions of new species. *The Veliger*, 35, 273–294 [October 1].

*Choristella marshalli*  
*Choristella nofronii*  
*Choristella ponderi*  
*Choristella hickmanae*  
*Bichoristes*  
*Bichoristes wareni*

McLean, J.H. (1992) Cocculiniform limpets (Cocculinidae and Pyropeltidae) living on whale bone in the deep sea off California. *Journal of Molluscan Studies*, 58, 401–414 [November].

*Cocculina craigsmithi*  
*Pyropelta wakefieldi*

McLean, J.H. (1993) New species and records of *Lepetodrilus* (Vetigastropoda: Lepetodrilidae) from hydrothermal vents. *The Veliger*, 36, 27–35 [January].

*Lepetodrilus tevnianus*  
*Lepetodrilus corrugaus*

McLean, J.H. (1995) Four new genera for northeastern Pacific prosobranch gastropods. *The Nautilus*, 108, 39–41 [March 7].

*Benthobulbus*  
*Pseudosabinella*  
*Ocenotrophon*  
*Retimohnia*

McLean, J.H. (1995) Three additional new genera and two replacement names for northeastern Pacific prosobranch gastropods. *The Nautilus*, 108, 80–82 [April 19].

(*Costomargarites*)  
(*Grandicrepidula*) [= *Grandicrepidula*, according to WoRMS]  
*Pseudotaranis*

- McLean, J.H. & Harasewych, M.G. (1995) Review of western Atlantic species of cocculinid and pseudococculinid limpets, with descriptions of new species (Gastropoda: Cocculiniformia). *Natural History Museum of Los Angeles County Contributions in Science*, 453, 1–33 [June 9].  
*Cocculina messingi*  
*Cocculina emsoni*  
*Coccapigya mikkelsenae*  
*Notocrater houbricki*  
*Notocrater youngi*  
*Kaiparapelta askewi*
- Haszprunar, G. & McLean, J.H. (1996) Anatomy and systematics of bathyphytophilid limpets (Mollusca, Archaeogastropoda) from the northeastern Pacific. *Zoologica Scripta*, 25, 35–49 [January].  
*Bathyphytophilus diegensis*
- McLean, J.H. (1996) The Prosobranchia. In: Scott, P.H., Blake, J.A., & Lissner, A. (Eds.), *Taxonomic Atlas of the Benthic Fauna of the Santa Maria Basin and Western Santa Barbara Channel. Volume 9 – The Mollusca Part 2, The Gastropoda*. Santa Barbara Museum of Natural History, Santa Barbara, California, pp. 1–160, [April 3].  
*Homalopoma cordellensis*  
*Megomphalus schmiederi*  
*Boreotrophon kabati*  
*Boreotrophon hazardi*  
*Scabrotrophon*  
*Scabrotrophon grovesi*  
*Scabrotrophon clarki*  
*Crockerella scotti*
- McLean, J.H. & Coan, E.V. (1996). Marine mollusks of Rocas Alijos. In: Schmieder, R.W. (Ed.), *Rocas Alijos*. Kluwer Academic Publishers, Dordrecht, Netherlands, pp. 305–318 [June 1].
- McLean, J.H. (1998) Reinstatement of *Williamia subspiralis* (Carpenter, 1864) (Gastropoda: Siphonariidae). *The Veliger*, 41, 243–248 [July 1].
- McLean, J.H. (1998) Notes on the columbellid genus *Mazatlaniana* Dall, 1900. *The Festivus*, 30, 117–118 [November 12].
- McLean, J.H. & Geiger, D.L. (1998) New genera and species having the *Fissurisepta* shell form, with a generic-level phylogenetic analysis (Gastropoda: Fissurellidae). *Natural History Museum of Los Angeles County Contributions in Science*, 475, 1–32 [December 16].  
*Manganesepta*  
*Manganesepta hessleri*  
*Profundisepta*  
*Clathrosepta*  
*Clathrosepta depressa*  
*Clathrosepta becki*  
*Cornisepta*  
*Cornisepta leviniae*  
*Cornisepta verenae*
- McLean, J.H. (1999) Suggested generic allocation for a Californian collumbellid. *The Festivus*, 31, 117–118 [November 11].
- McLean, J.H. (2000) Four new genera for northeastern Pacific gastropods. *The Nautilus*, 114, 99–102 [September 5].  
*Torrellivelutina*  
*Subniso*  
*Retidrillia*  
*Perimangelia*
- McLean, J.H. (2002) The family Dialidae (Gastropoda: Cerithioidea) in the eastern Pacific. *The Festivus*, 34, 93–96 [July 11].
- McLean, J.H. & Kanner, P. (2005) On the color form (or species?) *lineata* Stearns, 1873 of *Amphissa versicolor* Dall, 1871, with illustrations of other names forms of the species (Gastropoda: Columbellidae). *The Festivus*, 37, 111–115 [October 13].
- McLean, J.H. (2006) Hypothesis for the recognition of *Nucella analoga* (Forbes, 1852) in the northeastern Pacific. *The Festivus*, 38, 17–21 [February 9].
- McLean, J.H. (2007) Gastropoda: Shelled Gastropoda. In: Carlton, J.T. (Ed.), *The Light and Smith Manual: Intertidal invertebrates from central California to Oregon, 4<sup>th</sup> edition, completely revised and expanded*. University of California Press, Berkeley, California, pp. 713–753. [June].
- McLean, J.H. & Kiel, S. (2007) Cretaceous and living Colloniidae of the redefined subfamily Petropomatinae, with two new



genera and one new species, with notes on opercular evolution in turbinoideans, and the fossil record of Liotiidae (Vetigastropoda: Turbinoidea). *Paläontologische Zeitschrift*, 81, 254–266 [September 30].

†*Sohlipoma*

*Liotipoma*

*Liotipoma wallisensis*

McLean, J.H. & Gofas, S. (2008) Note on the genus *Anadema* H. and A. Adams, 1854 (Gastropoda: Colloniidae). *Iberus*, 26, 53–63 [June].

McLean, J.H. (2008) Three new species of the family Neolepetopsidae (Patellogastropoda) from hydrothermal vents and whale falls in the northeast Pacific. *Journal of Shellfish Research*, 27, 15–20 [March].

*Neolepetopsis nicolasensis*

*Paralepetopsis clementensis*

*Paralepetopsis tunnicliffae*

Geiger, D.L. & McLean, J.H. (2010) New species and records of Scissurellidae and Anatomidae from the Americas (Mollusca: Gastropoda: Vetigastropoda). *Zootaxa*, 2356, 1–35, [May].

*Sinezona kayae*

*Sinezona hawaiiensis*

*Sinezona carolarum*

*Coronadoa demisispira*

*Anatoma alternatisculpta*

*Anatoma disciformis*

*Anatoma plicatazona*

*Thielella peruviana* [= *Anatoma peruviana*, according to Geiger (2012: 1004–1007)]

*Thielella bathypacifica* [= *Anatoma bathypacifica*, according to Geiger (2012: 806–809)]

McLean, J.H. (2011) Reinstatement of the fissurellid subfamily Hemitominae, with the description of new genera, and proposed evolutionary lineage, based on morphological characters of shell and radula (Gastropoda: Vetigastropoda). *Malacologia*, 54, 407–427 [October 25].

*Hemimarginula*

*Octomarginula*

*Variagemarginula*

McLean, J.H. (2012) New species and genera of colloniids from Indo-Pacific coral reefs, with the definition of a new subfamily Liotipomatinae n. subfam. (Turbinoidea, Colloniidae). *Zoosystema*, 34, 343–376 [September].

Liotipomatinae

*Liotipoma mutabilis*

*Liotipoma dimorpha*

*Liotipoma magna*

*Liotipoma lifouensis*

*Liotipoma solaris*

*Liotipoma splendida*

*Liotipoma clausa*

*Depressipoma*

*Depressipoma kwajaleina*

*Depressipoma laddi*

*Rhombipoma*

*Rhombipoma rowleyana*

*Paraliotipoma*

*Paraliotipoma sirenkoi*

Areneidae

McLean, J.H. (2012) Detrital feeding in *Xeniostoma inexpectans*, new genus, new species, and new subfamily Xeniestomatinae of Calliostomatidae (Gastropoda: Vetigastropoda) hosted by hexactinellid sponges of the Aleutian Islands, Alaska. *The Nautilus*, 126, 89–97 [October 25].

Xeniostomatinae

*Xeniostoma*

*Xeniostoma inexpectans*

Valdés, A. & McLean, J.H. (2015) On two abyssal species of Scaphandridae G.O. Sars, 1878 (Gastropoda: Cephalaspidea) from the eastern Pacific. *The Nautilus*, 129, 118–125 [September 1].

## Meeting abstracts & posters:

- McLean, J.H. (1961) Sublittoral ecology and the molluscan assemblage of kelp beds near Carmel, California [abstract]. *American Malacological Union Annual Report for 1960*, 27, 41–42 [January 1].
- McLean, J.H. (1961) Feeding behavior of the chiton *Placiphorella* [abstract]. *American Malacological Union Annual Report for 1961*, 39 [December 1].
- Peckham, V.O. & McLean, J.H. (1961) Biological exploration at the head of Carmel submarine canyon [abstract]. *American Malacological Union Annual Report for 1961*, 43 [December 1].
- McLean, J.H. (1970) The families Liotiidae and Skeneidae in the eastern Pacific [abstract]. *Western Society of Malacologists, The Echo*, 2, 18. [March 9]
- McLean, J.H. (1971) Eastern Pacific Turridae: New developments. *Western Society of Malacologists Annual Report, The Echo*, 4, 6 [title only] [December 27].
- McLean, J.H. (1974) A collecting trip to Alaska. *Western Society of Malacologists Annual Report*, 7, 35 [title only] [November 12].
- McLean, J.H. (1976) A new genus and species of Monoplacophora from the continental shelf of southern California [abstract]. *Bulletin of the American Malacological Union for 1975*, 60 [January 30].
- McLean, J.H. (1976) *Fissurella* from Chile and Peru [abstract]. *Western Society of Malacologists Annual Report*, 9, 37 [title only]. [October 12]
- McLean, J.H. (1977) Highlights of the 1976 W.S.M. conference [abstract]. *Western Society of Malacologists Annual Report*, 10, 7 [title only] [December 14].
- McLean, J.H. (1977) New records of monoplacophora from Cortez Bank, California [abstract]. *Western Society of Malacologists Annual Report*, 10, 8 [title only] December 14].
- McLean, J.H. (1979) On a new archaeogastropod limpet convergent with the Calyptraeidae from the submarine thermal springs on the Galapagos Rift [abstract]. *Geological Society of America, Abstract with Programs*, 11, 92 [date unknown].
- McLean, J.H. (1980) Filter feeding aspidobranch limpets from submarine thermal springs of the Galapagos Rift—A new superfamily of archaic archaeogastropods [abstract]. *Journal of the Malacological Society of Australia*, 4, 225–226 [June 30].
- McLean, J.H. (1981) Filter-feeding aspidobranch limpets from submarine thermal springs of the Galapagos Rift [abstract]. *Western Society of Malacologists Annual Report*, 13, 14 [June 29].
- McLean, J.H. (1982) Importance of gill structure in trochacean classification [abstract]. *Western Society of Malacologists Annual Report*, 14, 11 [July 13].
- McLean, J.H. (1982) On the possible derivation of the Fissurellidae from the Bellerophonacea [abstract]. *Bulletin of the American Malacological Union for 1981*, 40–41 [date unknown].
- McLean, J.H. (1984) Shell reduction and loss in fissurellids: A review of genera and species in the *Fissurellidea* group [abstract]. *Western Society of Malacologists Annual Report*, 16, 23 [May 31].
- McLean, J.H. (1985) The archaeogastropod family Addisoniidae Dall, 1882: Life habit and review of species [abstract]. *Western Society of Malacologists Annual Report*, 17, 14–15 [August 28].
- McLean, J.H. 1986. The trochid genus *Lirularia* Dall, 1909: A filter feeder? [abstract]. *Western Society of Malacologists Annual Report*, 18, 24–25. [January 31]
- McLean, J.H. (1987) Angariinae and Liotiinae—The primitive living trochaceans [abstract]. *Western Society of Malacologists Annual Report*, 19, 16 [March 9].
- McLean, J.H. & Haszprunar, G. (1988) Slit limpets from hydrothermal vents: Superfamily Fissurellacea and a new family of Fissurellacea (Archaeogastropoda) [abstract]. *American Malacological Union Program with Abstracts*, 20. [June 19–24]
- McLean, J.H. (1989) Taxonomic status of deep-sea gastropods of the northeastern Pacific [abstract]. *Western Society of Malacologists Annual Report*, 30, 38 [December].
- McLean, J.H. (1989) Slit-limpets from hydrothermal vents [abstract]. *Western Society of Malacologists Annual Report*, 21, 17 [March 7].
- McLean, J.H. (1990) Archaeogastropod limpets at deep-sea hydrothermal vents: A 12 year overview of discoveries [abstract]. *Western Society of Malacologists Annual Report*, 22, 27 [June 11].
- McLean, J.H. & Coan, E.V. (1992) Marine mollusks of Rocas Alijos [abstract]. *Western Society of Malacologists Annual Report*, 24, 21 [June 8].
- McLean, J.H. (1995) Systematics of micromollusks symposium: Introduction and overview [abstract]. *Western Society of Malacologists Annual Report*, 27, 1 [October 31].
- McLean, J.H. (1995) Introduction and overview [abstract]. *Western Society of Malacologists Annual Report*, 27, 1 [October 31].
- McLean, J.H. (1995) Methods of collecting and handling marine micromollusks [abstract]. *Western Society of Malacologists*

*Annual Report*, 27, 1 [October 31].

- McLean, J.H. (1995) Progress toward revision of the Liotiinae and Colloniinae of the world [abstract]. *Western Society of Malacologists Annual Report*, 27, 2 [October 1].
- McLean, J.H. (1996) Northeastern Pacific gastropod fauna: Progress toward the completion of a checklist and illustrated book [abstract]. *Western Society of Malacologists Annual Report*, 28, 2 [February 15].
- McLean, J.H. (1996) Notes on genera and species of Alaskan Buccinidae [abstract]. *Western Society of Malacologists Annual Report*, 28, 2 [February 15].
- McLean, J.H. (1997) Phylogeny of fissurellid genera having the *Fissurepta* shell form [abstract]. *Western Society of Malacologists Annual Report*, 29, 17 [March 15].
- McLean, J.H. (1998) Taxonomic status of deep-sea gastropods of the northeast Pacific [abstract]. *Western Society of Malacologists Annual Report*, 30, 38 [December].
- McLean, J.H. (2000) Progress on the taxonomic manual: Shell-bearing Gastropoda of the northeastern Pacific [abstract]. *Western Society of Malacologists Annual Report*, 32, 17–18 [November].
- McLean, J.H. (2002) Revision of Liotiinae (Vetigastropoda: Turbinidae) of the world [abstract]. *Western Society of Malacologists Annual Report*, 34, 32–33 [7 June 2003].
- McLean, J.H. (2002) Progress toward completion of taxonomic reference manual: *Shell-bearing Gastropoda of the northeastern Pacific* [abstract]. *American Malacological Society Programs and abstracts*, 70. [August].
- McLean, J.H. (2002) Odostomiine genera reconsidered: Shell characters versus spermatophore characters [abstract]. *American Malacological Society Programs and abstracts*, 71. [August].
- McLean, J.H. (2003) Odostomiine genera reconsidered: Shell characters versus spermatophore characters [abstract]. *Western Society of Malacologists Annual Report*, 35, 28 [7 June 2003].
- McLean, J.H. (2003) Progress toward completion of taxonomic reference manual: Shell-bearing Gastropoda of the northeastern Pacific [abstract]. *Western Society of Malacologists Annual Report*, 35, 29 [7 June 2003].
- McLean, J.H. (2007). Status report on: “Shell-bearing Gastropoda of the northeast Pacific” [abstract]. *Western Society of Malacologists Annual Report*, 36, 61–62 [June].
- McLean, J.H. (2007) Shell-bearing Gastropoda of the northeast Pacific [poster] *Western Society of Malacologists Annual Report*, 36, 65–67 [June].
- McLean, J.H. (2008) Substantial progress toward the completion of the gastropod volumes for the northeastern Pacific [abstract]. *American Malacological Society Programs and Abstracts*, 36 [June].
- McLean, J.H. (2009) Genera of the *Crepidula*-group: Revised definitions based on characters of the shell and muscle septum [abstract]. *Western Society of Malacologists Annual Report*, 39, 24 [June].
- McLean, J.H. (2009) Substantial progress toward the completion of the gastropod volumes for the northeastern Pacific [abstract]. *Western Society of Malacologists Annual Report*, 41, 32 [June].
- McLean, J.H. (2011) Revision of Recent and fossil Liotiidae (Gastropoda: Vetigastropoda) [abstract]. *Western Society of Malacologists Annual Report*, 43, 59–60 [December 30].
- McLean, J.H. (2012) Revision of living and fossil Liotiidae and Areneidae of the world: The beaded operculum synapomorphy [abstract]. *American Malacological Society Program and Abstracts*, 54 [June].

### Popular publications, book reviews, & obituaries:

- McLean, J.H. (1969) Marine Shells of Southern California. *Los Angeles County of Natural History Science Series* 24, Zoology, 11, 1–104 [October].
- McLean, J.H. (1978) Marine Shells of Southern California, Revised Edition. *Natural History Museum of Los Angeles County Science Series*, 24, 1–104 [March 20].
- McLean, J.H. (1984) The world of marine micromollusks. *Terra*, 22, 25–26, 28–30 [July/August]. [Reprinted in *Shells & Sea Life*, 16, 152–156]
- McLean, J.H. (1984) Use of the scanning electron microscope (SEM) in malacological research. *Terra*, 22, 26–27 [July/August].
- McLean, J.H. (1987) Review of *Seashells of Brazil* by E.C. Rios. *The Festivus*, 19, 8 [January 8].
- McLean, J.H. (1992) Obituary: Rae Baxter, 1929–1991. *The Nautilus*, 106, 125–126 [August 21].
- McLean, J.H. (1994) Review of *Architectonicidae of the Indo-Pacific (Mollusca: Gastropoda)* by R. Bieler. *The Festivus*, 26, 74 [June 9].
- McLean, J.H. (1995) Charles Clifton Coney, 1949–1993. *Malacological Review*, 28, 133–135 [date unknown].
- McLean, J.H. (1996) Review of *Monographs on Galapagos Mollusca: Marine Molluscs of the Galapagos, Gastropods no. 1 and no. 2* by Y. Finet. *The Festivus*, 28, 71 [June 13]
- McLean, J.H. (1997) Gale G. Sphon, 1934–1995, and his contributions to malacology. *The Festivus*, 29, 63–65 [July 10].



- McLean, J.H. (1998) Review of *Mollusca: The southern synthesis. Fauna of Australia* by P.I. Beesley, J.B. Boss, and A. Wells (eds.). *The Festivus*, 30, 48–50 [April 9].
- McLean, J.H. (1999) Review of *A field guide to the mollusks of Galápagos* by C.P. Hickman and Yves Finet. *The Festivus*, 31, 91 [August 12].
- Groves, L.T. & McLean, J.H. (2001) Bertram C. Draper 1904–2000. *The Festivus*, 33, 63–65 [June 14].
- McLean, J.H. (2007) Twila Bratcher-Critchlow (1911–2006). *The Festivus*, 39, 61–65 [July 12].
- McLean, J.H. (2007) Review of *Marine and brackish water Gastropoda of Russia and adjacent countries: An illustrated catalog* by Yu. I. Kantor & A.V. Sysoev. *The Veliger*, 49, 212–213 [October 1].

### Dissertation:

- McLean, J.H. (1966) West American prosobranch Gastropoda: Superfamilies Patellacea, Pleurotomariacea and Fissurellacea [Ph.D. dissertation]. Stanford University, Stanford, California, x + 262 p. [June].
- McLean, J.H. (1967) West American prosobranch Gastropoda: Superfamilies Patellacea, Pleurotomariacea and Fissurellacea. *Dissertation Abstracts*, 28, 2 unnumbered pages [date unknown].

### Taxa named by James H. McLean, systematic order

At least 344 gastropod taxa and two monoplacophoran taxa described by J.H. McLean and co-authors are listed in systematic order following the classification of Bouchet *et al.* (2017). These 344 taxa include one order, four superfamilies, 10 families, 13 subfamilies, four tribes, 58 genera, 11 subgenera, 242 species, and one subspecies. Note that some higher-level taxa have been raised and/or lowered and some have been placed in synonymy. Updated taxonomy, when known, is noted following each entry. †Denotes fossil taxa

### Mollusca

#### Class Monoplacophora

##### Order Trybidiida

##### Neopilinoidea

##### Neopilinidae

(*Laevipilina*) McLean (1979) [= *Laevipilina*, according to WoRMS]

*Vema* (*Laevipilina*) *hyalina* McLean (1979) [= *Laevipilina hyalina*, according to WoRMS]

#### Class Gastropoda

##### Subclass Patellogastropoda

##### Order Patellida [includes Lepetopsina McLean (1990)]

##### Lottioidea [includes Lepetopsoidea McLean (1990) [as Lepetopsacea]]

##### Lottidae

*Lottia mimica* Lindberg & McLean (1981)

*Lottia smithi* Lindberg & McLean (1981)

*Notoacmea immaculata* Lindberg & McLean (1981) [= *Lottia immaculata*, according to WoRMS]

*Notoacmea pumila* Lindberg & McLean (1981) [= *Tectura pumila*, according to WoRMS]

*Notoacmea rothi* Lindberg & McLean (1981) [= *Lottia rothi*, according to WoRMS]

*Notoacmea ubiquita* Lindberg & McLean (1981) [= *Tectura ubiquita*, according to WoRMS]

##### Lepetidae

*Iothia lindbergi* McLean (1985)

##### Lepetopsidae McLean (1990)

##### Neolepetopsidae McLean (1990)

*Eulepetopsis* McLean (1990)

*Eulepetopsis vitrea* McLean (1990)  
*Neolepetopsis* McLean (1990)  
*Neolepetopsis densata* McLean (1990)  
*Neolepetopsis gordensis* McLean (1990)  
*Neoleptopsis nicolasensis* McLean (2008)  
*Neolepetopsis occulta* McLean (1990)  
*Neolepetopsis verruca* McLean (1990)  
*Paralepetopsis* McLean (1990)  
*Paraleptopsis clementensis* McLean (2008)  
*Paraleptopsis floridensis* McLean (1990)  
*Paraleptopsis tunnicliffae* McLean (2008)

### **Subclass Neomphaloina**

**Neomphaloidea McLean (1981)** [as Neomphalacea; includes Peltospiroidea McLean (1989: as Peltospiracea)]

**Neomphalidae McLean (1981)** [includes Cyathermiidae McLean (1990), as synonymized by Bouchet *et al.* (2005)]

*Neomphalus* McLean (1981)  
*Neomphalus fretterae* McLean (1981)  
*Symmetromphalus* McLean (1990)  
*Symmetromphalus regularis* McLean (1990)

### **Peltospiridae McLean (1989)**

*Echinopelta* McLean (1989)  
*Echinopelta fistulosa* McLean (1989)  
*Hirtopelta* McLean (1989)  
*Hirtopelta hirta* McLean (1989)  
*Nodopelta* McLean (1989)  
*Nodopelta heminoda* McLean (1989)  
*Nodopelta subnoda* McLean (1989)  
*Peltospira* McLean (1989)  
*Peltospira delicata* McLean (1989)  
*Peltospira operculata* McLean (1989)  
*Rhynchopelta* McLean (1989)  
*Rhynchopelta concentrica* McLean (1989)

### **Order Cocculinida**

#### **Cocculinoidea**

#### **Cocculinidae**

*Cocculina baxteri* McLean (1987)  
*Cocculina cowani* McLean (1987)  
*Cocculina craigsmithi* McLean (1992)  
*Cocculina emsoni* McLean & Harasewych (1995)  
*Cocculina messingi* McLean & Harasewych (1995)  
*Coccapigya mikkelsenae* McLean & Harasewych (1995)

### **Subclass Vetigastropoda**

#### **Order Seguenziida**

#### **Seguenzioidea**

#### **Seguenziidae**

*Seguenzia quinni* McLean (1985)

#### **Choristellidae**

*Bichoristes* McLean (1992)  
*Bichoristes wareni* McLean (1992)

*Choristella hickmanae* McLean (1992)  
*Choristella marshalli* McLean (1992)  
*Choristella nofronii* McLean (1992)  
*Choristella ponderi* McLean (1992)

**Calliotropini Hickman & McLean (1990)** [= Eucyclidae according to WoRMS]

## **Order Lepetellida**

### **Lepetelloidea**

#### **Addisoniidae**

*Addisonia brophyi* McLean (1985)

#### **Bathyphytophilidae**

*Bathyphytophilus diegensis* Haszprunar & McLean (1996)

#### **Pseudococculinidae**

*Amphiplica knudseni* McLean (1988)

*Amphiplica venezuelensis* McLean (1988)

(*Gordabyssia*) McLean (1991) [= *Amphiplica*, according to WoRMS]

*Amphiplica* (*Gordabyssia*) *gordensis* McLean (1991) [= *Amphiplica gordensis*, according to WoRMS]

(*Dictyabyssia*) McLean (1991) [may = *Caymanabyssia*, according to WoRMS]

*Caymanabyssia* (*Dictyabyssia*) *fosteri* McLean (1991) [= *Caymanabyssia fosteri*, according to WoRMS]

*Caymanabyssia* (*Dictyabyssia*) *vandoverae* McLean (1991) [= *Caymanabyssia vandoverae*, according to WoRMS]

*Kaiparapelta askewi* McLean & Harasewych (1995)

*Notocrater houbrieki* McLean & Harasewych (1995)

*Notocrater youngi* McLean & Harasewych (1995)

*Punctabyssia* McLean (1991)

*Punctabyssia tibbettsi* McLean (1991)

*Yaquinabyssia careyi* McLean (1988)

#### **Pyropeltidae McLean & Haszprunar (1987)**

*Pyropelta* McLean & Haszprunar (1987)

*Pyropelta corymba* McLean & Haszprunar (1987)

*Pyropelta musaica* McLean & Haszprunar (1987)

*Pyropelta wakefieldi* McLean (1992)

## **Fissurelloidea**

### **Fissurellidae**

*Amblychilepas platyactis* McLean & Kilburn (1986)

*Clathrosepta* McLean & Geiger (1998)

*Clathrosepta becki* McLean & Geiger (1998)

*Clathrosepta depressa* McLean & Geiger (1998)

*Cornisepta* McLean & Geiger (1998)

*Cornisepta levinae* McLean & Geiger (1998)

*Cornisepta verena* McLean & Geiger (1998)

*Dendrofissurella* McLean & Kilburn (1986)

*Diodora arnoldi* McLean (1966)

*Diodora codoceoae* McLean & Andrade (1982)

*Diodora punctifissa* McLean (1970)

*Emarginula angusta* McLean (1970)

*Emarginula dictya* McLean (1970)

*Fissurella* (*Clypidella*) *morrisoni* McLean (1969 [1970]) [= *Fissurella morrisoni*, according to WoRMS]

*Fissurella* (*Cremides*) *decemcostata* McLean (1970) [= *Fissurella deceocostata*, according to WoRMS]

*Fissurella* (*Cremides*) *deroyae* McLean (1969 [1970]) [= *Fissurella deroyae*, according to WoRMS]

*Hemimarginula* McLean (2011)



*Leurolepas* McLean (1970)  
*Leurolepas roseola* McLean (1970)  
*Lucapinella eleanorae* McLean (1967)  
*Manganesepta* McLean & Geiger (1998)  
*Manganesepta hessleri* McLean & Geiger (1998)  
*Medusafissurella* McLean & Kilburn (1986)  
*Nesta galapagensis* McLean (1970) [= *Zeidora galapagensis*, according to WoRMS]  
*Octomarginula* McLean (2011)  
*Profundisepta* McLean & Geiger (1998)  
*Puncturella rothi* McLean (1984)  
*Puncturella (Cranopsis) decorata* Cowan & McLean (1968) [= *Cranopsis decorata*, according to WoRMS]  
*Rimula astricta* McLean (1970)  
*Scelidotoma* McLean (1966)  
*Tugali chilensis* McLean (1970)  
*Variagemarginula* McLean (2011)

## **Haliotoidea**

### **Haliotidae**

*Haliotis (Padollus) roberti* McLean (1969 [1970]) [= *Haliotis dalli roberti*, according to Geiger & Owen, 2012: 82.]

## **Lepetodriloidea McLean 1988** [as Lepetodrilacea]

### **Lepetodrilidae McLean 1988** [includes Gorgoleptidae McLean, 1988 and Clypeosectidae McLean, 1989]

*Clypeosectus* McLean (1989)  
*Cylpeosectus curvus* McLean (1989)  
*Clypeosectus delectus* McLean (1989)  
*Gorgoleptis* McLean (1988)  
*Gorgoleptis emarginatus* McLean (1988)  
*Gorgoleptis patulus* McLean (1988)  
*Gorgoleptis spiralis* McLean (1988)  
*Lepetodrilus* McLean (1988)  
*Lepetodrilus corrugatus* McLean (1993)  
*Lepetodrilus cristatus* McLean (1988)  
*Lepetodrilus elevatus* McLean (1988)  
*Lepetodrilus elevatus galriftensis* McLean (1988)  
*Lepetodrilus fucensis* McLean (1988)  
*Lepetodrilus galriftensis* McLean (1988)  
*Lepetodrilus guaymasensis* McLean (1988)  
*Lepetodrilus ovalis* McLean (1988)  
*Lepetodrilus pustulosus* McLean (1988)  
*Lepetodrilus tevnianus* McLean (1993)  
*Pseudorimula* McLean (1989)  
*Pseudorimula marianae* McLean (1989)  
*Pseudorimula midatlantica* McLean (1992)

### **Sutilizonidae McLean (1989** [as Sultizoninae, elevated to Sutilizonidae by Bouchet *et al.*, (2017); includes Temnocinclinae McLean, 1989]

*Sutilizona* McLean (1989)  
*Sutilizona theca* McLean (1989)  
Sutilizoninae McLean (1989)  
*Temnocinclis* McLean (1989)  
*Temnocinclis euripes* McLean (1989)  
*Temnozaga* McLean (1989)  
*Temnozaga parilis* McLean (1989)

## Scissurelloidea

### Scissurellidae

*Coronadoa demispira* Geiger & McLean (2010)

*Sinezona carolarum* Geiger & McLean (2010)

*Sinezona kayae* Geiger & McLean (2010)

*Sinezona hawaiiensis* Geiger & McLean (2010)

### Anatominæ McLean (1989) [Anatomidae according to Geiger (2012: 732)]

*Anatoma alternatisculpta* Geiger & McLean (2010)

*Anatoma baxteri* McLean (1984) [= *Anatoma lyra* (Berry, 1947), according to Geiger (2012: 964–972)]

*Anatoma disciformis* Geiger & McLean (2010)

*Scissurella* (*Anatoma*) *epicharis* McLean (1969 [1970]) [= *Anatoma keenae*, according to Geiger (2012: 942–948)]

*Scissurella* (*Anatoma*) *keenae* McLean (1969 [1970]) [= *Anatoma keenae*, according to Geiger, 2012: 942–948)]

*Anatoma plicatazona* Geiger & McLean (2010)

*Thielella bathypacifica* Geiger & McLean (2010) [= *Anatoma bathypacifica*, according to Geiger (2012: 806–809)]

*Thielella peruviana* Geiger & McLean (2010) [= *Anatoma peruviana*, according to Geiger (2012: 1004–1007)]

## Order Trochoidea

### Trochoidea

#### Trochidae

*Agathodon nortoni* McLean (1984) [= *Clypeostoma nortoni*, according to WoRMS]

Cataeginae McLean & Quinn (1987)

*Cataegis* McLean & Quinn (1987)

*Cataegis celebesensis* McLean & Quinn (1987)

*Cataegis meroglypta* McLean & Quinn (1987) [= *Kanoia meroglypta*, according to WoRMS]

*Cataegis toreuta* McLean & Quinn (1987) [= *Cataegis finkli* Petuch, 1987, according to WoRMS]

(*Costomargarites*) McLean (1995)

*Halistylus genecoani* McLean (1984)

*Lirularia bicostata* McLean (1964)

*Lirularia discors* McLean (1984)

*Mirachelus galapagensis* McLean (1969 [1970])

*Margarites hickmanae* McLean (1984)

*Solariella micraulax* McLean (1964)

Subfamily Umboniinae [includes Lirulariinae, Monileini, Bankiviini Hickman & McLean (1990)]

### Areneidae McLean (2012)

*Arene adusta* McLean (1969 [1970])

*Arene echinata* McLean (1970)

*Arene ferruginosa* McLean (1969 [1970])

*Arene guttata* McLean (1970)

*Arene stellata* McLean (1969 [1970])

*Bathylotina glassi* McLean (1988)

†*Macrarene diegensis* McLean (1964)

*Macrarene digitata* McLean, Absalão, & Santos Cruz (1988)

*Macrarene lepidotera* McLean (1969 [1970])

*Pseudoliotina springsteeni* McLean (1988)

### Calliostomatidae

*Calliostoma bernardi* McLean (1984) [= *Akoya platinum* (Dall, 1890), according to Tuskes this volume]

*Calliostoma gordanum* McLean (1970)

*Calliostoma jacquelinae* McLean (1970)

*Calliostoma keenae* McLean (1970)

*Calliostoma sanjaimense* McLean (1970)

*Calliostoma santacruzianum* McLean (1970)

*Calliostoma titanium* McLean (1984) [= *Akoya platinum* (Dall, 1890), according to Tuskes this volume]

*Calliostoma veleroae* McLean (1970)

*Calliostoma (Otukaia) delli* McLean & Andrade (1982) [= *Maurea delli* or *Otukaia delli*, according to WoRMS]  
Xeniostomatinae McLean (2012)  
*Xeniostoma* McLean (2012)  
*Xeniostoma inexpectans* McLean (2012)

### **Colloniidae**

*Depressipoma* McLean (2012)  
*Depressipoma kwajaleina* McLean (2012)  
*Depressipoma laddi* McLean (2012)  
Liotipomatinae McLean (2012)  
*Liotipoma* McLean & Kiel (2007)  
*Liotipoma clausa* McLean (2012)  
*Liotipoma dimorpha* McLean (2012)  
*Liotipoma lifouensis* McLean (2012)  
*Liotipoma magna* McLean (2012)  
*Liotipoma mutabilis* McLean (2012)  
*Liotipoma solaris* McLean (2012)  
*Liotipoma splendida* McLean (2012)  
*Liotipoma wallisensis* McLean & Kiel (2007)  
Moelleriinae Hickman & McLean (1990)  
*Paraliotipoma* McLean (2012)  
*Paraliotipoma sirenkoi* McLean (2012)  
*Rhombipoma* McLean (2012)  
*Rhombipoma rowleyana* McLean (2012)  
†*Sohlipoma* McLean & Kiel (2007)

**Margaritidae** [includes *Gazini* Hickman & McLean (1990)]

### **Phasianellidae**

**Gabrieloninae Hickman & McLean (1990)**

### **Tegulidae**

*Tegula (Agathistoma) bergeroni* McLean (1969 [1970]) [= *Tegula bergeroni*, according to WoRMS]  
*Tegula (Agathistoma) corteziana* McLean (1969 [1970]) [= *Tegula corteziana*, according to WoRMS]  
*Tegula (Agathistoma) felipensis* McLean (1969 [1970]) [= *Tegula felipensis*, according to WoRMS]  
*Tegula (Agathistoma) mendella* McLean (1964), [= *Tegula (Agathistoma) eiseni* Jordan, 1936, according to McLean 1964: 133, *Tegula eiseni*, according to WoRMS following 133]  
*Tegula (Agathistoma) picta* McLean (1969 [1970]) [= *Tegula picta*, according to WoRMS]  
*Tegula (Agathistoma) verdispira* McLean (1969 [1970]) [= *Tegula verdispira*, according to WoRMS]  
*Tegula (Agathistoma) verrucosa* McLean (1969 [1970]) [= *Tegula verrucosa*, according to WoRMS]

### **Turbinidae**

(*Chaenoturbo*) McLean (1970)  
†*Homalopoma berryi* McLean (1964)  
*Homalopoma cordellensis* McLean (1996)  
*Homalopoma draperi* McLean (1984)  
(*Megastraea*) McLean (1970) [= *Megastraea*, according to WoRMS]  
Prisogasterinae Hickman & McLean (1990)  
*Spiromoelleria* Baxter & McLean (1984)  
*Spiromoelleria kachemakensis* Baxter & McLean (1984)  
*Tricolia diantha* McLean (1969 [1970]) [= *Eulithidium diantha*, according to WoRMS]

### **Cohort Sorbeoconcha**

#### **Subcohort Cerithiimorpha**

#### **Cerithioidea**

#### **Turritellidae**

*Turritella parkeri* McLean (1969 [1970])

*Turritella willetti* McLean (1970)

*Vermicularia frisbeyae* McLean (1970)

## **Suncohort Hypsogastropoda**

### **Epitonioidae**

#### **Epitoniidae**

*Amaea (Scalina) tehuanaarum* DuShane & McLean (1968) [= *Amaea tehuanaarum*, according to WoRMS]

*Epitonium (Asperiscala) huffmani* DuShane & McLean (1968) [= *Epitonium huffmani*, according to WoRMS]

*Epitonium (Epitonium) shyorum* DuShane & McLean (1968) [= *Epitonium shyorum*, according to WoRMS]

### **Littorinoidea**

#### **Littorinidae**

*Littorina albicarinata* McLean (1969 [1970]) [= *Echinolittorina albicarinata*, according to WoRMS]

### **Naticoidea**

#### **Naticidae**

*Benthobulbus* McLean (1995)

*Natica brunneolinea* McLean (1970)

*Natica sigillata* McLean (1970)

### **“Rissoform clade”**

#### **Vanikoroidea**

##### **Vanikoridae**

*Megalomphalus schmiederi* McLean (1996)

#### **Eulimidae**

*Niso emersoni* McLean (1969 [1970])

*Pseudosabinella* McLean (1995)

*Subniso* McLean (2000)

## **Superorder Latrogastropoda**

### **Calyptraeoidea**

#### **Calyptraeidae**

*(Grandicrepidula)* McLean (1995) [= *Grandicrepidula*, according to WoRMS]

### **Cypraeoidea**

#### **Velutinidae**

*Torellivelutina* McLean (2000)

## **Order Neogastropoda**

### **Superfamily Volutoidea**

#### **Cancellariidae**

*Cancellaria (Crawfordina) stuardoi* McLean & Andrade (1982) [= *Merica stuardoi*, according to WoRMS]

†*Neadmete sutherlandi* Kanakoff & McLean (1966)

### **Buccinoidea**

#### **Buccinidae**

*Aeneator castillai* McLean & Andrade (1982)

*Cantharus (Gemophos) berryi* McLean (1970) [= *Cantharus berryi*, according to WoRMS]

*Retimohnia* McLean (1995)

## **Columbellidae**

*Decipifus gracilis* McLean (1959)

## **Fasciolariidae**

*Fusinus allyni* McLean (1970)

## **Nassariidae**

*Nassarius shaskyi* McLean (1969 [1970])

## **Muricoidea**

### **Muricidae**

*Boreotrophon hazardi* McLean (1996)

*Boreotrophon kabati* McLean (1996)

*Ocenotrophon* McLean (1995)

*Scabrotrophon* McLean (1996)

*Scabrotrophon clarki* McLean (1996)

*Scabrotrophon grovesi* McLean (1996)

*Trophon bahamondei* McLean & Andrade (1982)

## **Turbinelloidea**

### **Columbariidae**

*Columbarium tomicici* McLean & Andrade (1982)

## **Conoidea**

### **Borsoniidae**

*Borsonella abrupta* McLean & Poorman (1971)

*Borsonella galapagana* McLean & Poorman (1971)

(*Borsonellopsis*) McLean (1971) [= *Borsonellopsis*, according to WoRMS]

*Retidrillia* McLean (2000)

## **Clathurellidae**

**Clathurellinae McLean (1971)** [= Clathurellidae, according to WoRMS]

*Clathurella maryae* McLean & Poorman (1971) [= *Etrema maryae*, according to WoRMS]

*Crockerella scotti* McLean (1996)

*Euclathurella acclivicallis* McLean & Poorman (1971)

*Glyphostoma* (*Glyphostoma*) *pustulosa* McLean & Poorman (1971) [= *Glyphostoma pustulosa*, according to WoRMS]

*Glyphostoma* (*Glyphostoma*) *scobina* McLean & Poorman (1971) [= *Glyphostoma scobina*, according to WoRMS]

## **Conidae**

*Conus kohni* McLean & Nybakken (1979) [= *Kohniconus kohni*, according to Tucker & Tenorio, 2009: 146]

## **Drilliidae**

*Agladrillia badia* McLean & Poorman (1971)

*Agladrillia flucticulus* McLean & Poorman (1971)

*Agladrillia gorgonensis* McLean & Poorman (1971)

*Bellaspira acclivicosta* McLean & Poorman (1970)

*Bellaspira clarionensis* McLean & Poorman (1970)

*Bellaspira margaritensis* McLean & Poorman (1970)

*Calliclava* McLean (1971)

*Calliclava jaliscoensis* McLean & Poorman (1971)

*Calliclava lucida* McLean & Poorman (1971)

*Calliclava rhodina* McLean & Poorman (1971)

*Calliclava subtilis* McLean & Poorman (1971)

*Cerodrillia asymmetrica* McLean & Poorman (1971)

*Drillia* (*Clathrodrillia*) *berryi* McLean & Poorman (1971) [= *Clathrodrillia berryi*, according to WoRMS]

*Drillia* (*Drillia*) *cunninghamae* McLean & Poorman (1971) [= *Drillia cunninghamae*, according to WoRMS]

*Drillia (Drillia) inornata* McLean & Poorman (1971) [= *Drillia inornata*, according to WoRMS]  
*Drillia (Drillia) sinuosa* McLean & Poorman (1971) [Junior homonym of *D. sinuosa* Bellardi, 1877, renamed *D. macleani* Tucker, 1992]  
*Drillia (Drillia) tumida* McLean & Poorman (1971) [= *Drillia tumida*, according to WoRMS]  
*Drillia (Drillia) valida* McLean & Poorman (1971) [= *Drillia valida*, according to WoRMS]  
*Elaeocyma amplinucis* McLean & Poorman (1971)  
*Elaeocyma melichroa* McLean & Poorman (1971)  
*Fusiturricula andrei* McLean & Poorman (1971)  
*Kylix contracta* McLean & Poorman (1971)  
*Kylix woodringi* McLean & Poorman (1971)  
*Leptadrillia firmichorda* McLean & Poorman (1971)  
*Splendrillia academica* McLean & Poorman (1971)  
*Splendrillia arga* McLean & Poorman (1971)  
*Splendrillia bratcheri* McLean & Poorman (1971)  
*Syntomodrillia vitrea* McLean & Poorman (1971)

### **Horaiclavidae**

*Thelecythara dushanae* McLean & Poorman (1971)

### **Mangeliidae**

*Acmaturris ampla* McLean & Poorman (1971)  
*Bellacythara* McLean (1971)  
*Kurtzia elenensis* McLean & Poorman (1971)  
*Kurtzia humboldti* McLean & Poorman (1971)  
*Perimangelia* McLean (2000)  
*Pyrgocythara angulosa* McLean & Poorman (1971)

### **Mitromorphidae**

*Cymakra baileyi* McLean & Poorman (1971)  
*Cymakra granata* McLean & Poorman (1971)

### **Pseudomelatomidae** [includes Zonulispirinae McLean (1971)]

*Buridrillia deroyorum* Emerson & McLean (1992)  
*Carinodrillia lachrymosa* McLean & Poorman (1971)  
*Compsodrillia gracilis* McLean & Poorman (1971)  
*Compsodrillia olssoni* McLean & Poorman (1971)  
*Compsodrillia opaca* McLean & Poorman (1971)  
*Compsodrillia undatichorda* McLean & Poorman (1971)  
(*Crassiclava*) McLean (1971) [= *Crassiclava*, according to WoRMS]  
*Crassispira (Dallspira) martiae* McLean & Poorman (1971) [= *Crassispira martiae*, according to WoRMS]  
*Crassispira (Monilispira) currani* McLean & Poorman (1971) [= *Crassispira currani*, according to WoRMS]  
*Crassispira (Striospira) coracina* McLean & Poorman (1971) [= *Crassispira coracina*, according to WoRMS]  
*Doxospira* McLean (1971)  
(*Gibbaspira*) McLean (1971) [= *Gibbaspira*, according to WoRMS]  
(*Glossispira*) McLean (1971) [= *Glossispira*, according to WoRMS]  
*Lioglyphostoma rectilabrum* McLean & Poorman (1971)  
*Maesiella* McLean (1971)  
*Maesiella maesae* McLean & Poorman (1971)  
(*Nymphispira*) McLean (1971) [= *Nymphispira*, according to WoRMS]  
*Pseudotaraxis* McLean (1995)  
*Pyrgospira* McLean (1971)

### **Zonulispirinae McLean (1971)** [= Pseudomelatomidae, according to WoRMS]

### **Raphitomidae**

*Daphnella gemmulifera* McLean & Poorman (1971)



*Daphnella retusa* McLean & Poorman (1971)  
*Kermia informa* McLean & Poorman (1971)  
*Microdaphne* McLean (1971)  
*Philbertia shaskyi* McLean & Poorman (1971)  
*Rimosodaphnella deroyae* McLean & Poorman (1971)  
*Truncadaphne* McLean (1971)  
*Vepracula tornipila* McLean & Poorman (1971)

**Strictispirinae McLean (1971)** [= Strictispiridae, according to WoRMS]

*Cleospira* McLean (1971)  
*Strictispira* McLean (1971)

**Taxa named for James H. McLean**

In recognition of Jim's numerous contributions to Malacology, at least 40 taxa (1 genus and 39 species) have been named in his honor by colleagues (e.g. *Sinezona macleani* Geiger, 2006: Fig. 18). To date there are 35 gastropods (1 genus and 34 species), 2 bivalves, 2 chitons, and 1 scaphopod named in Jim's honor. This includes three species described in this volume. This includes three species described in this volume. † Denotes fossil taxa.

**Abbreviations**

ANSP: Academy of Natural Sciences of Drexel University, Philadelphia, Pennsylvania, USA.  
CAS: California Academy of Sciences, San Francisco, California, USA.  
LACM: Natural History Museum of Los Angeles County, Malacology Department, Los Angeles, California, USA.  
LACMIP: Natural History Museum of Los Angeles County, Invertebrate Paleontology Department, Los Angeles, California, USA.  
MNHN: Muséum National d'Histoire Naturelle, Paris, France.  
NM: KwaZulu-Natal Museum, Pietermaritzburg, South Africa.  
NMNZ: Museum of New Zealand, Te Papa Tongarewa, Wellington, New Zealand.  
RASZI: Russian Academy of Sciences, Zoological Institute, St. Petersburg, Russia.  
SBMNH: Santa Barbara Museum of Natural History, Santa Barbara, California, USA.  
SGO: Museo Nacional de Historia Natural, Santiago, Chile.  
SU: Stanford University, Stanford, California, USA (collections now at CAS).  
USNM: National Museum of Natural History, Smithsonian Institution, Washington, DC, USA.  
UWBM: University of Washington, Burke Museum of Natural History and Culture, Seattle, Washington, USA.

*Calliostoma macleani* Shasky & Campbell, 1964: 117–118, pl. 21, figs 21, 24. Holotype CAS 64691.00 [ex SU 9742].  
*Pterynotus (Purpurellus) macleani* Emerson & d'Attilio, 1969: 147–148, pl. 26, figs 1–4. Holotype LACM 1230, paratype LACM 1273. [= *Purpurellus macleani*, according to WoRMS]. (see Fig. 19).  
*Coralliophila macleani* Shasky, 1970: 189–190, fig. 4. Holotype LACM 1411, 1 paratype LACM 1412. (see Fig. 20).  
*Epitonium (Asperiscala) macleani* DuShane, 1970: 3, fig. 2. Holotype LACM 1197, 8 paratypes LACM 1198. [= *Epitonium macleani*, according to WoRMS]  
*Decipifus macleani* Keen, 1971: 588, fig. 1224. Holotype LACM 1266, 90 paratypes LACM 1267.  
*Engina macleani* Olsson, 1971: 57, fig. 42. Holotype whereabouts unknown.  
*Tricolia macleani* Marincovich, 1973: 25, figs 47, 56. Holotype LACM 1585, 275 paratypes LACM 1586. [= *Eulithidium macleani*, according to WoRMS]  
*Delonovolva macleani* Cate, 1976: 159, fig. 5. Holotype LACM 1772. [= *Neosimnia macleani*, according to Lorenz & Fehse, 2009: 101]  
*Prunum (Prunum) macleani* Roth, 1978: 4–6, figs 5–8. Holotype USNM 749065, 9 paratypes LACM 1778, paratype USNM 749066, paratype CASIZ 63481.00 (ex CASIZ 55607). [= *Prunum macleani*, according to WoRMS]  
*Ischnochiton macleani* Ferreira, 1978: 36–39, figs 1–2. Holotype LACM 1853, 8 paratypes LACM 1854.

- Cadulus (Platyschides) macleani* Emerson, 1978: 122, figs 1–3. Holotype LACM 1886, 3 paratypes LACM 1887. [= *Cadulus macleani*, according to WoRMS]
- Lepidozona macleani* Ferreira, 1985: 425–427, figs 6–10. Holotype LACM 2004.
- †*Arene mcleani* Squires, 1988: 9–10, figs 9–11. Holotype LACMIP 7691, paratypes LACMIP 7692–7693.
- Limatula macleani* Bernard, 1988: 227, fig. 2. Holotype LACM 2336. [= *Limatula (Limatula) saturna* Bernard, 1978, according to Coan *et al.* (2000: 207)]. (see Fig. 21).
- Terebra macleani* Bratcher, 1988: 415, figs 3, 10. Holotype NM D473/3687, paratype NM D4809/ T3688. [= *Pristiterebra macleani*, according to Terryn (2007: 26)]
- Semele jamesi* Coan, 1988: 33–35, figs 62–63. Holotype SBMNH 34941, 28 paratypes SBMNH 34942.
- Provanna macleani* Warén & Bouchet, 1989: 94–95, fig. 112. Holotype LACM 2289, 3 paratypes LACM 2290, paratype USNM 859255.
- Drillia (Drillia) sinuosa* Tucker, 1992: 96–97, fig. 16. Holotype LACM 1491. (see Fig. 23).
- Eulimostraca macleani* Warén, 1992: 187, figs 11, 32, 34, 40. Holotype LACM 2370, paratype LACM 2371.
- Cantrainea macleani* Warén & Bouchet, 1993: 8–10, figs 4A–C, 5B, F–G, 6A. Holotype MNHN-IM-2000-31205 and paratype MNHN.
- Eatoniella (Albosabula) mcleani* Ponder & Worsford, 1994: 19, figs 11G, 12B, 13E–F. Holotype LACM 2668, 295 paratypes LACM 2669.
- Macron mcleani* Vermeij, 1998: 72–73, figs 16–17. Holotype LACM 2812. (see Fig. 22).
- †*Pseudoliotina mcleani* Sohl, 1998: 42–43, pl. 1, figs 2–3, 6–8, 11–12. Holotype USNM 468033, paratype USNM 468034.
- Macleaniella* Leal & Harasewych, 1999: 123. Type species *Macleaniella moskalevi* Leal & Harasewych, 1999.
- †*Bathybembix mcleani* Nielsen, Frassinetti & Bandek. 2004: 79–80, figs 33–36. Holotype SGO.PI.6002, paratype SGO.PI.6003.
- Sinezona macleani* Geiger, 2006: 16–19, figs 12–13. Holotype USNM 289748, paratype USNM 276829, NMNZ M257059, additional paratypes MNHN. (see Fig. 18).
- †*Prisogaster mcleani* DeVries, 2006: 145–146, figs 11–12, 20–21, 23–32. Holotype UWBM 97841, paratypes UWBM 97842–97843.
- †*Fissurella (Fisurella) mcleani* DeVries, 2008: 140–141, figs 55–57. Holotype UWBM 98475.
- Muricopsis (Muricopsis) mcleani* Wiedrick, 2009: 50–51, figs 1–2, 7–12. Holotype LACM 3097.
- Acirsa mcleani* Sirenko, 2009: 118–119, fig. 45. Holotype. RASZI 60876.
- Plicifusus mcleani* Sirenko, 2009: 130–131, fig. 87a–c. Holotype RASZI 60941 [= *Plicifusus rogersi* (Gould, 1860), according to WoRMS]
- †*Puncturella* (sensu lato) *mcleani* Kiel, Campbell & Gaillard, 2010: 29–31, fig. 2. Holotype UCMP 55740, paratypes UCMP 557041–557042, LACMIP 13558–13559.
- Ammonicera mcleani* Sartpro & Bieler, 2014: 8–10, fig. 5. Holotype LACM 3284, paratypes LACM 3285.
- Americoliva mcleani* Petuch & Myers, 2014: 67–68, figs 1C–D. Holotype LACM 3269, paratypes LACM 3270. (see Fig. 28).
- Philine mcleani* Valdés, Cadien & Gosliner, 2016: 522–524, figs 13–14. Holotype LACM 3434.
- Harfordia mcleani* Callomon & Snyder, 2017: 71–73, pl. 6, figs 51–54. Holotype ANSP 466314, paratypes ANSP 466315–466317, CAS 085771, LACM 3344, USNM 410415.
- Seguenzia macleani* Geiger, 2017: 231, figs 25–28. Holotype LACM 3321, paratypes LACM 3485–3486.
- Buccinum macleani* Clark, 2019, (this volume)
- Scabrotrophon macleani* Houart, Vermeij, & Wiedrick, 2019 (this volume)
- Paciocinebrina macleani* Houart, Vermeij, & Wiedrick, 2019 (this volume)

## References

- Bernard, F.R. (1988) Five new species of the family Limidae (Bivalvia) from the eastern Pacific Ocean. *Venus*, 47, 225–232.
- Bouchet, P., Frýda, J., Hausdorf, B., Ponder, W., Valdés, A. & Warén, A. (2005) Working classification of the Gastropoda. *Malacologia*, 47, 240–397.
- Bouchet, P., Rocroi, J.-P., Hausdorf, B., Kaim, A., Kano, Y., Nützel, A., Parkhaev, P., Schrödl, M., & Strong, E.E. (2017) Revised classification, nomenclator and typification of gastropod and monoplacophoran families. *Malacologia*, 61, 1–526. <https://doi.org/10.4002/040.061.0201>
- Bratcher, T. (1988) Six new species of Terebridae (Mollusca: Gastropoda) from Panama and the Indo-West Pacific. *The Veliger*, 30, 412–416.
- Callomon, P. & Snyder, M.A. (2017) A new genus and nine new species in the Fascioliidae (Gastropoda: Buccinoidea) from southern California and western Mexico. *Proceedings of the Academy of Natural Sciences of Philadelphia*, 165, 55–80. <https://doi.org/10.1635/053.165.0105>
- Cate, C.N. (1976) Five new species of Ovulidae (Mollusca: Gastropoda). *The Veliger*, 19, 159–162.
- Coan, E.V. (1988) Recent eastern Pacific species of the bivalve genus *Semele*. *The Veliger*, 31, 1–15.
- Coan, E.V., Valentich Scott, P. & Bernard, F.R. (2000) Bivalve seashells of western North America. *Santa Barbara Museum of*

*Natural History Monographs*. 2, viii + 764 pp.

- DeVries, T.J. (2006) The Neogene history of *Prisogaster* Mörch, 1850 (Gastropoda: Turbinidae) in South America. *The Nautilus*, 120, 139–149.
- DeVries, T.J. (2008) Pliocene and Pleistocene *Fissurella* Bruguière, 1789 (Gastropoda: Fissurellidae) from southern Peru. *The Veliger*, 50, 129–148.
- DuShane, H. (1970) Five new epitoniid gastropods from the west coast of the Americas. *Los Angeles County Museum of Natural History Contributions in Science*, 185, 1–6.
- Emerson, W.K. & d'Attilio, A. (1969) Remarks on the taxonomic placement of *Purpurellus* Jousseaume, 1880, with the description of a new species. *The Veliger*, 12, 145–148.
- Emerson, W.K. (1978) Two new eastern Pacific species of *Cadulus*, with remarks on the classification of the scaphopod mollusks. *The Nautilus*, 92, 117–123.  
<https://doi.org/10.5962/bhl.part.28075>
- Ferreira, A.J. (1978) A new species of chiton (Neoloricata: Ischnochitonidae) from the Galápagos Islands. *Bulletin of the Southern California Academy of Sciences*, 77, 36–39.
- Ferreira, A.J. (1985) Three new species of *Lepidozona* (Mollusca: Polyplacophora) from the Gulf of California. *The Veliger*, 27, 425–427.
- Geiger, D.L. (2006) Eight new species of Scissurellidae and Anatomidae (Mollusca: Gastropoda: Vetigastropoda) from around the world, with discussion of two new senior synonyms. *Zootaxa*, 1128, 1–33.
- Geiger, D.L. (2012) Monograph of the little lit shells. Volume 2. Anatomidae, Larocheidae, Depressizonidae, Sutilizonidae, Temnocinclidae. *Santa Barbara Museum of Natural History Monographs*, 7, 731–1291.
- Geiger, D.L. (2017) Four new Vetigastropoda (Anatomidae, Seguenziidae) from the northeastern Pacific. *The Nautilus*, 131, 226–232.
- Geiger, D.L. & Owen, B. (2012) *Abalone: World-wide Haliotidae*. ConchBooks, Hackenheim, Germany, viii + 361 pp.
- Keen, A.M. (1971) *Sea Shells of Tropical West America. Marine Mollusks from Baja California to Peru. Second edition*. Stanford University Press, Stanford, California. xiv + 1064 pp.
- Kiel, S., Campbell, K.A., & Gaillard, C. (2010) New and little known mollusks from ancient chemosynthetic environments. *Zootaxa*, 2390, 26–48.  
<https://doi.org/10.11646/zootaxa.2390.1.2>
- Leal, J.H. & Harasewych, M.G. (1999) Deepest Atlantic mollusks: Hadal limpets (Mollusca, Gastropoda, Cocculiniformia) from the northern boundary of the Caribbean Plate. *Invertebrate Biology*, 118, 116–136.  
<https://doi.org/10.2307/3227054>
- Lorenz, F. & Fehse, D (2009) *The living Ovulidae. A manual of the families of allied cowries: Ovulidae, Pediculariidae and Eocypraeidae*. ConchBooks, Hackenheim, Germany, 651 pp.
- Marincovich, L., Jr. (1973) Intertidal mollusks of Iquique, Chile. *Natural History Museum of Los Angeles County Science Bulletin*, 16, 1–49.
- McLean, J.H. (1964) *Tegula eiseni* E.K. Jordan, 1936 prior to *Tegula mendella* McLean, 1964. *The Veliger*, 7, 133.
- Nielsen, S.N., Frassinetti, D. & Bandel, K. (2004) Miocene Vetigastropoda and Neritimorpha (Mollusca, Gastropoda) of central Chile. *Journal of South American Earth Sciences*, 17, 73–88.  
<https://doi.org/10.1016/j.jsames.2004.05.005>
- Olsson, A.A. (1971) Mollusks from the Gulf of Panama collected by R/V *John Elliot Pillsbury*, 1967. *Bulletin of Marine Science*, 21, 35–92.
- Petuch, E.J. & Myers, R.F. (2014) New species and subspecies of olive shells (Gastropoda: Olividae) from the Panamic and Indo-Pacific regions and the Gulf of Mexico. *The Festivus*, 45, 63–74.
- Ponder, W.F. & Worsfold, T.M. (1994) A review of the rissoiform gastropods of southwestern South America (Mollusca, Gastropoda). *Natural History Museum of Los Angeles County Contributions in Science*, 445, 1–63.
- Roth, B. (1978) New species and records of tropical American Marginellidae (Mollusca: Neogastropoda). *Natural History Museum of Los Angeles County Contributions in Science*, 292, 1–18.
- Sartori, A.F. & Bieler, R. (2014) Three new species of *Ammonicera* from the eastern Pacific coast of North America, with redescription and comments on other species of Omalogyridae (Gastropoda, Heterobranchia). *Zootaxa*, 3872, 1–21.  
<https://doi.org/10.11646/zootaxa.3872.1.1>
- Shasky, D.R. (1970) New gastropod taxa from tropical west America. *The Veliger*, 13, 188–195.
- Shasky, D.R. & Campbell, G.B. (1964) New and otherwise interesting species of mollusks from Guaymas, Sonora, Mexico. *The Veliger*, 7, 114–120.
- Sirenko, B.I. 2009. The prosobranchs of the gastropods (Mollusca, Gastropoda, Prosobranchia) of the Chukchi Sea and the Bering Strait, their species composition and distribution. In: Sirenko B.I. (Ed), Ecosystems and biological resources of the Chukchi Sea and adjacent Areas. *Russian Academy of Sciences, Zoological Institute, Explorations of the Fauna of the*

*Seas*, 64, 104–153. [In Russian]

- Sohl, N.F. (1998) Upper Cretaceous trochacean gastropods from Puerto Rico and Jamaica. *Palaeontographica Americana*, 60, 1–109.
- Squires, R.L. (1988) Eocene macropaleontology of northern Lockwood Valley, Ventura County, California. *Natural History Museum of Los Angeles County Contributions in Science*, 398, 1–23.
- Terryn, Y. (2007) Terebridae. A collectors guide. ConchBooks, Hackenheim, Germany, 57 pp.
- Tucker, J.K. (1992) *Drillia macleani*, a new name for *Drillia sinuosa* McLean and Poorman, 1971 (Gastropoda: Turridae). *The Nautilus*, 106, 76. [Original description in McLean, J.H. & Poorman, R. (1971) New species of tropical eastern Pacific Turridae. *The Veliger*, 14, 89–113].
- Tucker, J.K. & Tenorio, M.J. (2009) *Systematic classification of recent and fossil conoidean gastropods*. ConchBooks, Hackenheim, Germany, 295 pp.
- Valdés, A., Cadien, D.B. & Gosliner, T.M. (2016) Philinidae, Laonidae, and Philinorbidae (Gastropoda: Cephalaspidea: Philinoidea) from the northeastern Pacific Ocean and the Beaufort Sea. *Zootaxa*, 4147, 501–537.
- Vermeij, G.J. (1998) Generic revision of the neogastropod family Pseudolividae. *The Nautilus*, 111, 53–84.
- Warén, A. (1992) Comments on and descriptions of eulimid gastropods from tropical west America. *The Veliger*, 35, 177–194.
- Warén, A. & Bouchet, P. (1989) New gastropods from east Pacific hydrothermal vents. *Zoologica Scripta*, 18, 67–102.
- Warén, A. & Bouchet, P. (1993) New records, species, genera, and a new family of gastropods from hydrothermal vents and hydrocarbon seeps. *Zoologica Scripta*, 22: 1–90.
- Wiedrick, S. (2009) Description of a new *Muricopsis* (Gastropoda: Muricidae: Muricopsinae) from the Panamic Province. *Novapex*, 10, 47–52.
- WoRMS *World Register of Marine Species*: <http://marinespecies.org>