



Erratum

<http://dx.doi.org/10.11646/zootaxa.3694.5.8>

<http://zoobank.org/urn:lsid:zoobank.org:pub:C9047D69-A47F-472E-A52D-393546F36AD8>

A.J. BRUCE (2013) *Onycocaris maui* sp. nov., a new pontonine sponge associate (Crustacea: Decapoda: Palaemonidae) from the Hawai'ian Islands. *Zootaxa*, 3691 (3), 377–388.

The correct version of figure 3 is presented here:

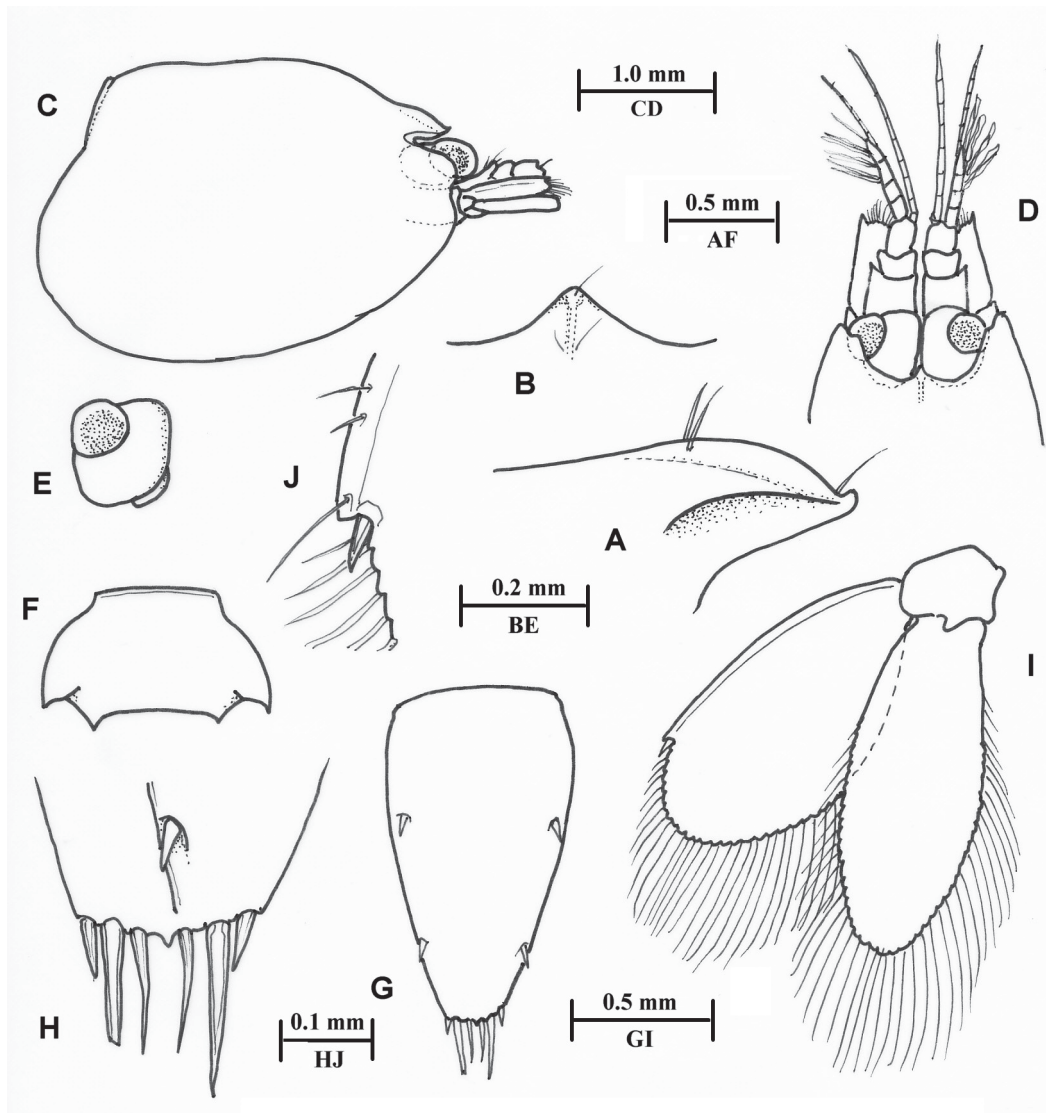


FIGURE 3. *Onycocaris maui* sp. nov., post-ovigerous female paratype, Maui, QM W29192. A, rostrum, lateral. B, same, dorsal. C, carapace and anterior appendages. D, same, dorsal. E, eye. F, sixth abdominal segment, dorsal. G, telson. H, same, posterior spines. I, uropod. J, same, exopod, distolateral angle.