

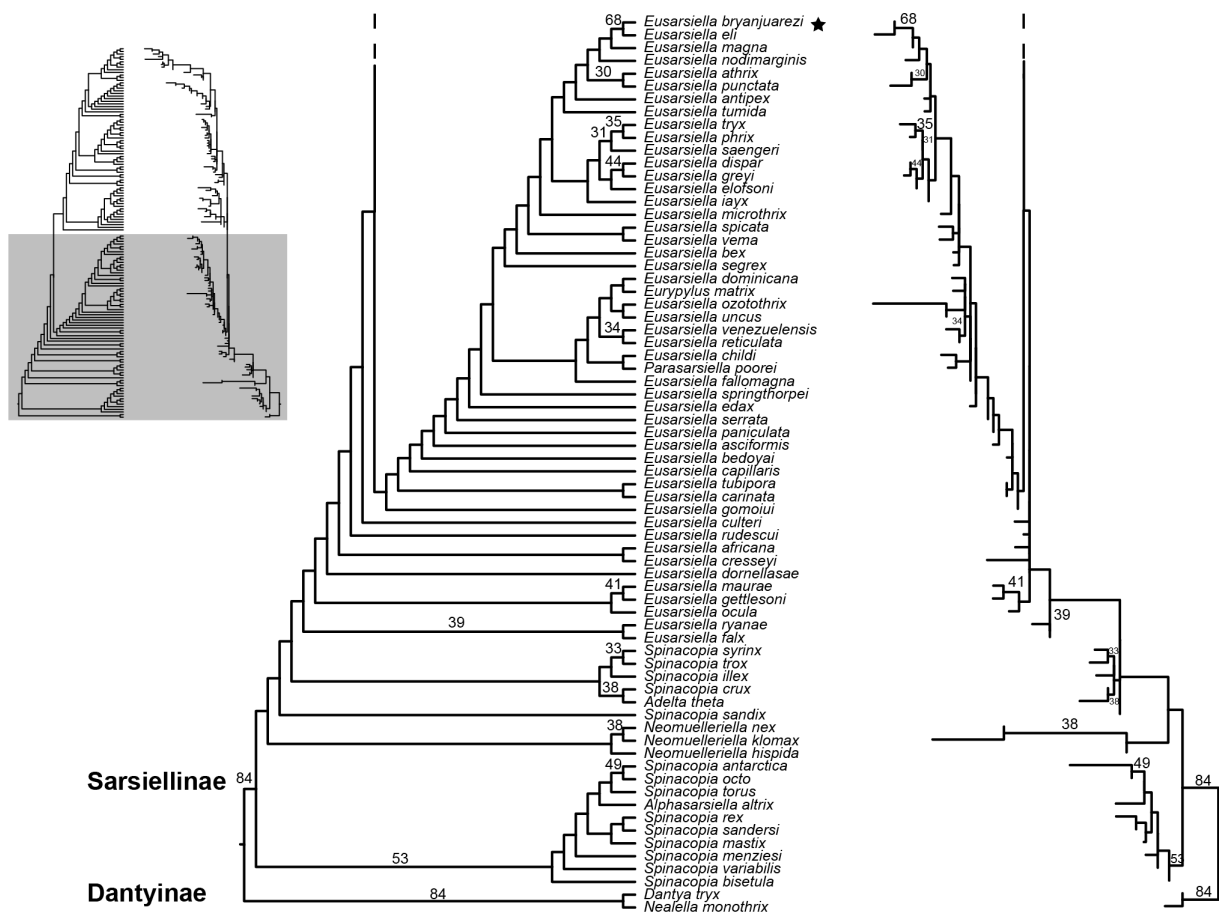


<http://dx.doi.org/10.11646/zootaxa.3884.6.9>

<http://zoobank.org/urn:lsid:zoobank.org:pub:3764AF8D-7796-40AE-9AEE-1D69849458A6>

**CELIA K. C. CHURCHILL, EMILY A. ELLIS, ALANNAH E. PIQUE & TODD H. OAKLEY (2014)  
Two new sympatric species of *Eusarsiella* (Ostracoda: Myodocopida: Sarsiellidae) from the Florida  
Keys with a morphological phylogeny of Sarsiellinae. *Zootaxa*, 3802 (4): 444–458.**

(1) In the printed version of Figure 7, the species names were accidentally misaligned with the branches of the phylogeny. The correctly aligned figure along with its legend (unchanged) is as follows:



**FIGURE 7.** Morphological phylogeny from revised Sarsiellin character matrix (Part 2). The full phylogeny is presented on the left side, with a dark gray box indicating the magnified lower part of the tree presented at right. Maximum likelihood bootstrap percentages greater than 30 shown above branches or next to nodes, space permitting. Two new species of *Eusarsiella* described here are labeled with a black star. Subfamilies Sarsiellinae and Dantynaie (outgroup) are labeled. The authors are grateful to Ivana Karanovic and Ho-Young Soh for pointing out the error.

(2) Additional Reference

Churchill, C.K.C., Ellis, E.A., Pique, A.E. & Oakley, T.H. (2014) Two new sympatric species of *Eusarsiella* (Ostracoda: Myodocopida: Sarsiellidae) from the Florida Keys with a morphological phylogeny of Sarsiellinae. *Zootaxa*, 3802 (4), 444–458.