



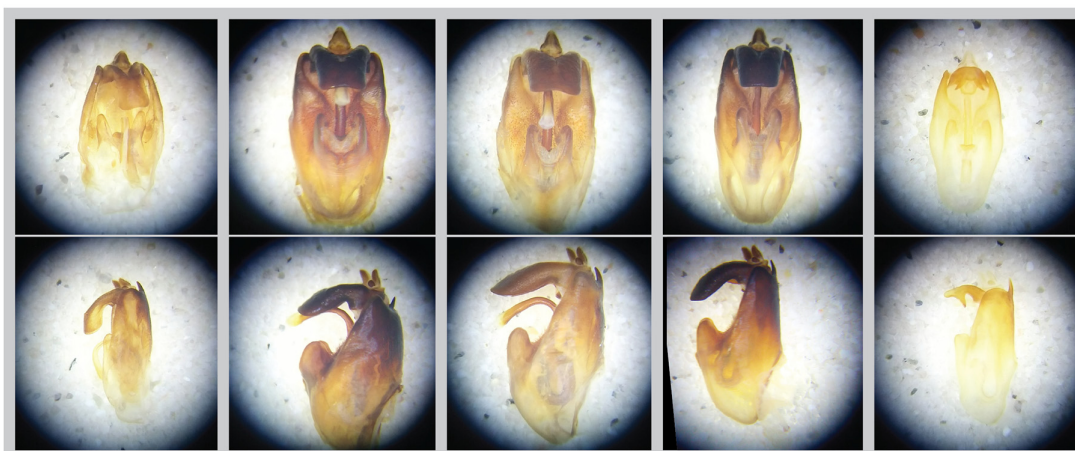
*Neotibicen  
auriferus*  
TIB12

*Neotibicen  
canicularis*  
TIB30

*Neotibicen  
davisii*  
TIB20

*Neotibicen  
linnei*  
TIB8

*Neotibicen  
latifasciatus*  
TIB38



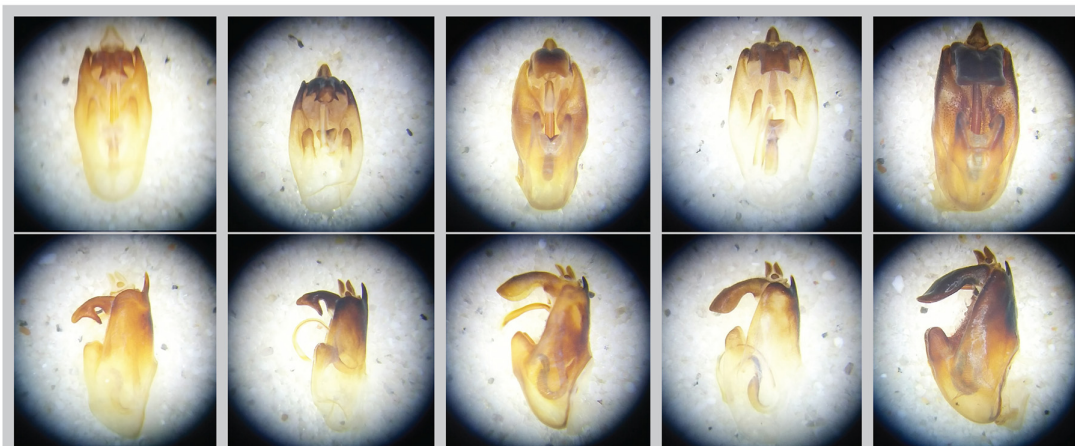
*Neotibicen  
lyricen lyricen*  
TIB7

*Neotibicen  
lyricen virescens*  
TIB5

*Neotibicen  
pruinus*  
TIB10

*Neotibicen  
robinsonianus*  
TIB32

*Neotibicen  
similaris similaris*  
HSC.20



*Neotibicen  
similaris  
apalachicola*  
n. subsp., LMC.02

*Neotibicen  
similaris  
apalachicola*  
n. subsp., TIB22

*Neotibicen  
superbus*  
TIB21

*Neotibicen  
tibicen tibicen*  
TIB29

*Neotibicen  
winnemanna*  
TIB34

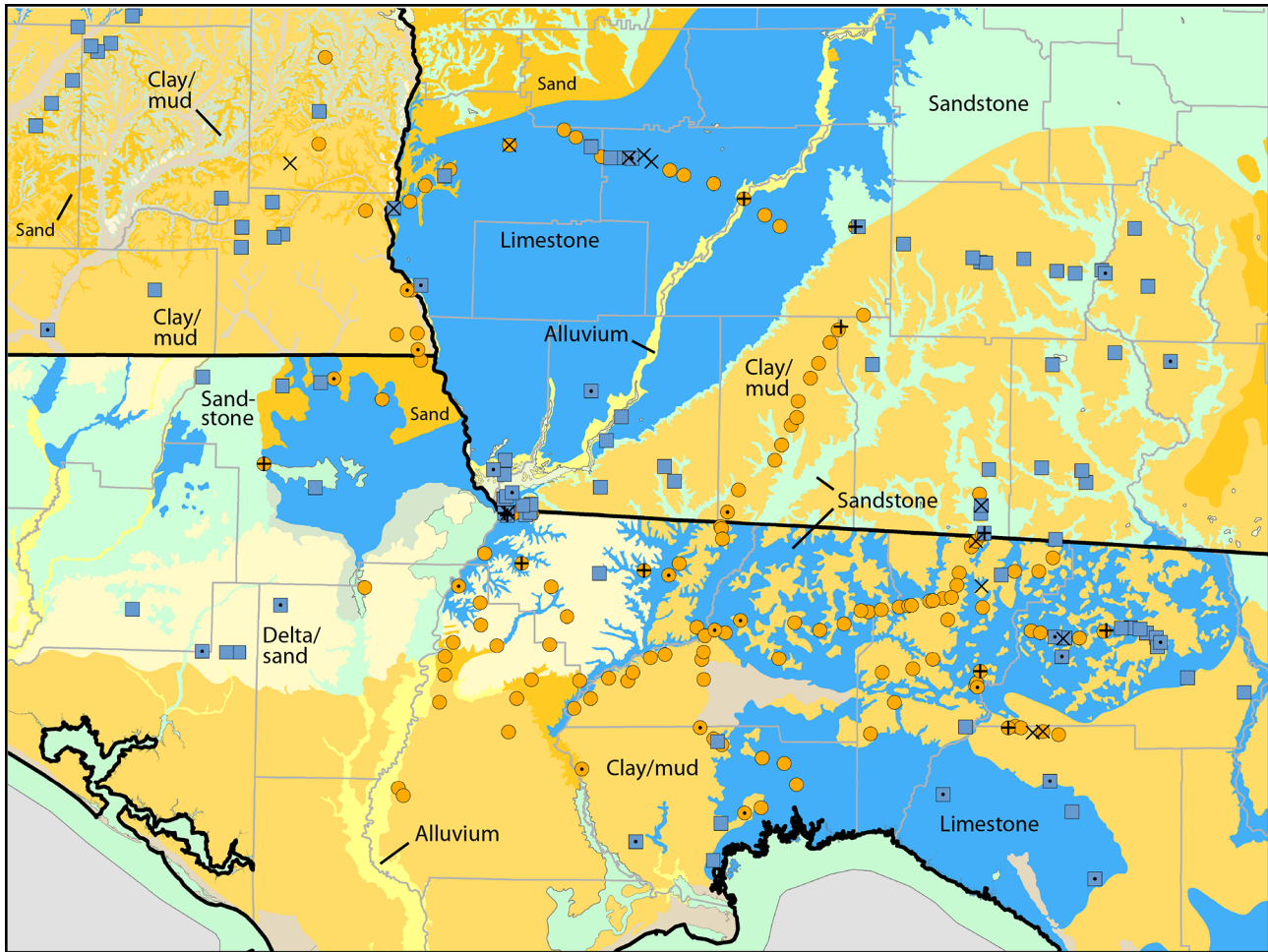
**SUPPLEMENTARY FIGURE 1.** Pygofers of *Neotibicen* species, ventral above lateral views. For species other than *N. similaris*, the specimen code refers to dissection prep. codes for specimens in M. S. Moulds collection, used in Hill *et al.* 2015. The aedeagus is not extruded in all specimens.



**SUPPLEMENTARY FIGURE 2.** Female *Neotibicen similaris apalachicola*, **n. subsp.**, dorsal above ventral view, in teneral condition from recent emergence. Specimen collected 20 July 2008 at the holotype locality. Scale bar = 12.5 mm.



**SUPPLEMENTARY FIGURE 3.** Photographs from the type locality of *Neotibicen similaris apalachicola*, **n. subsp.**, an interstate highway rest area west of Tallahassee, Florida near the Ochlockonee River.



**SUPPLEMENTARY FIGURE 4.** Distributions of *Neotibicen similis* subspecies in the Apalachicola region of northern Florida and southern Alabama and Georgia in relation to geological characteristics of the terrain obtained from United States Geological Survey data (USGS 2016). Text labels for colors match the "ROCKTYPE1" field for the state-level survey datasets. Symbols for species records are as follows: *N. similis similis* (blue), *N. similis apalachicola* n. subsp. (orange), and hybrid cicadas (X and + symbols). Symbols with central dots or a + symbol indicate that a specimen was collected or a voucher recording was made, respectively. All other records were aurally noted in the field.