



NOPPADON MAKBUN & GÜNTHER FLECK (2018) Description of *Microgomphus farrelli* sp. nov. (Odonata: Anisoptera: Gomphidae) based on adults of both sexes and larvae from Northern Thailand. *Zootaxa*, 4422: 442–450.

Figures 13–31 related to the larvae should be displayed as follow:

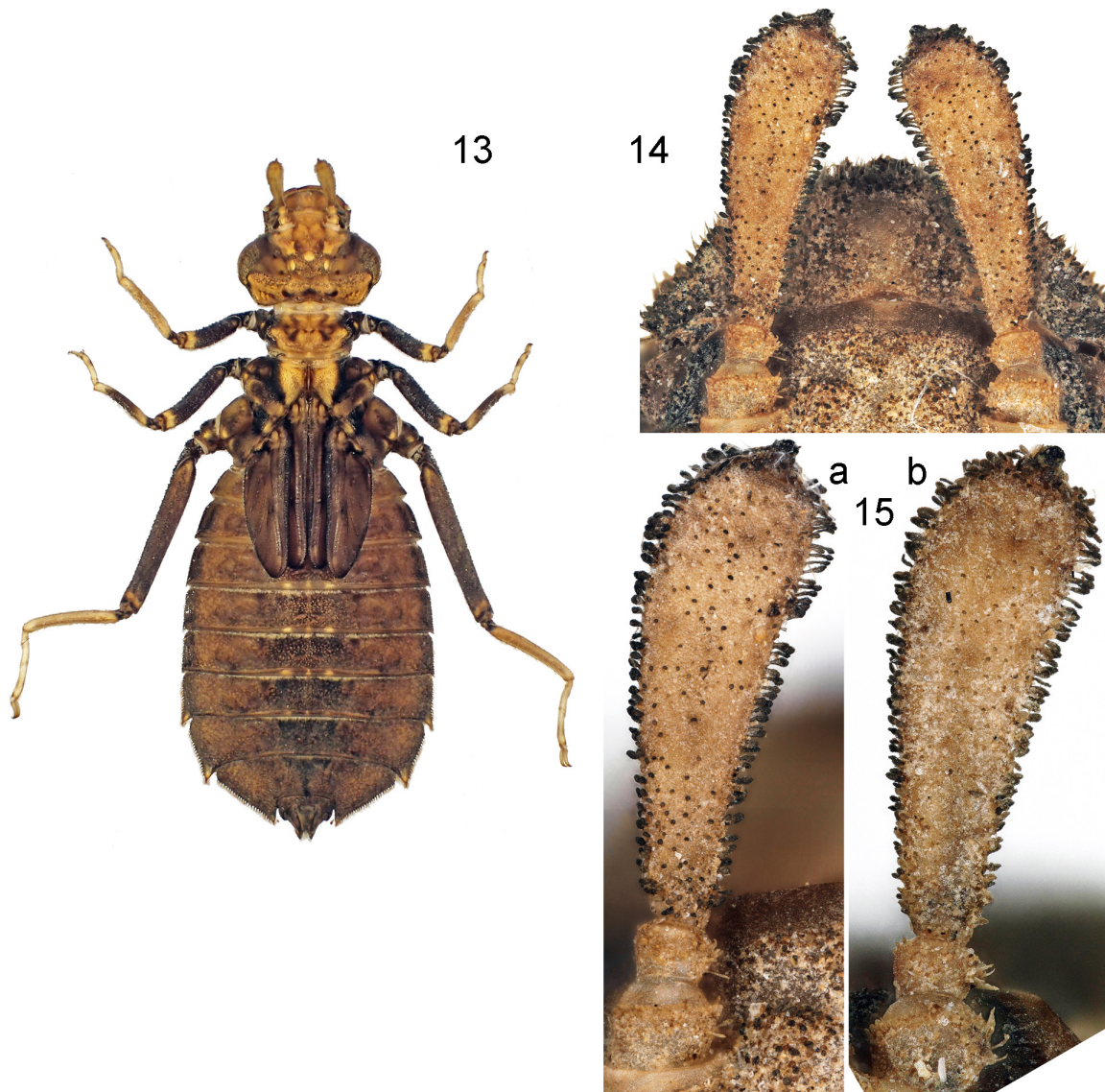


FIGURE 13–15. *Microgomphus farrelli* sp. nov., F-0: (13) ♀, general habitus in dorsal view; (14) Front of head in dorsal view showing antennae and labrum; (15) Left antennae: a) ♀ exuvia, b) ♂ exuvia, note the slightly more dilated ♂ third antennomere.



FIGURE 16–18. *Microgomphus farrelli* sp. nov., F-0: (16) Detail of the apex of an antenna in ventral view showing distal part of the third antennomere and the fourth antennomere; (17) Detail of the ventral median part of the third antennomere; (18) Detail of the dorsal medio-basal part of the third antennomere.

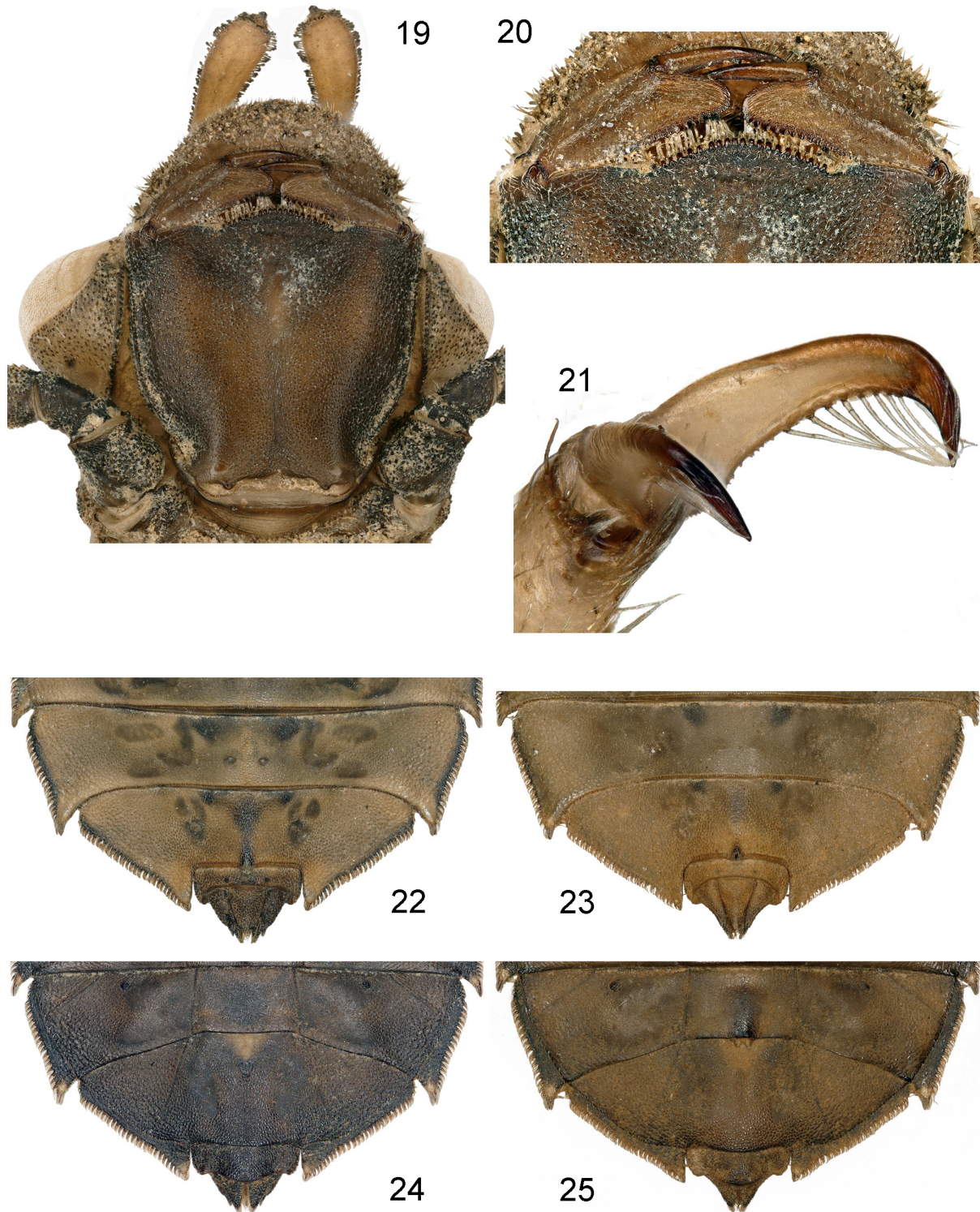


FIGURE 19–25. *Microgomphus farrelli* sp. nov., F-0: (19) Head and part of prothorax in ventral view; (20) Detail of the ventral apex of the labium and a part of the ventral part of the labrum; (21) Tarsal claws of posterior leg; (22) Distal part of ♂ abdomen in dorsal view; (23) Distal part of ♀ abdomen in dorsal view; (24) Distal part of ♂ abdomen in ventral view; (25) Distal part of ♀ abdomen in ventral view.

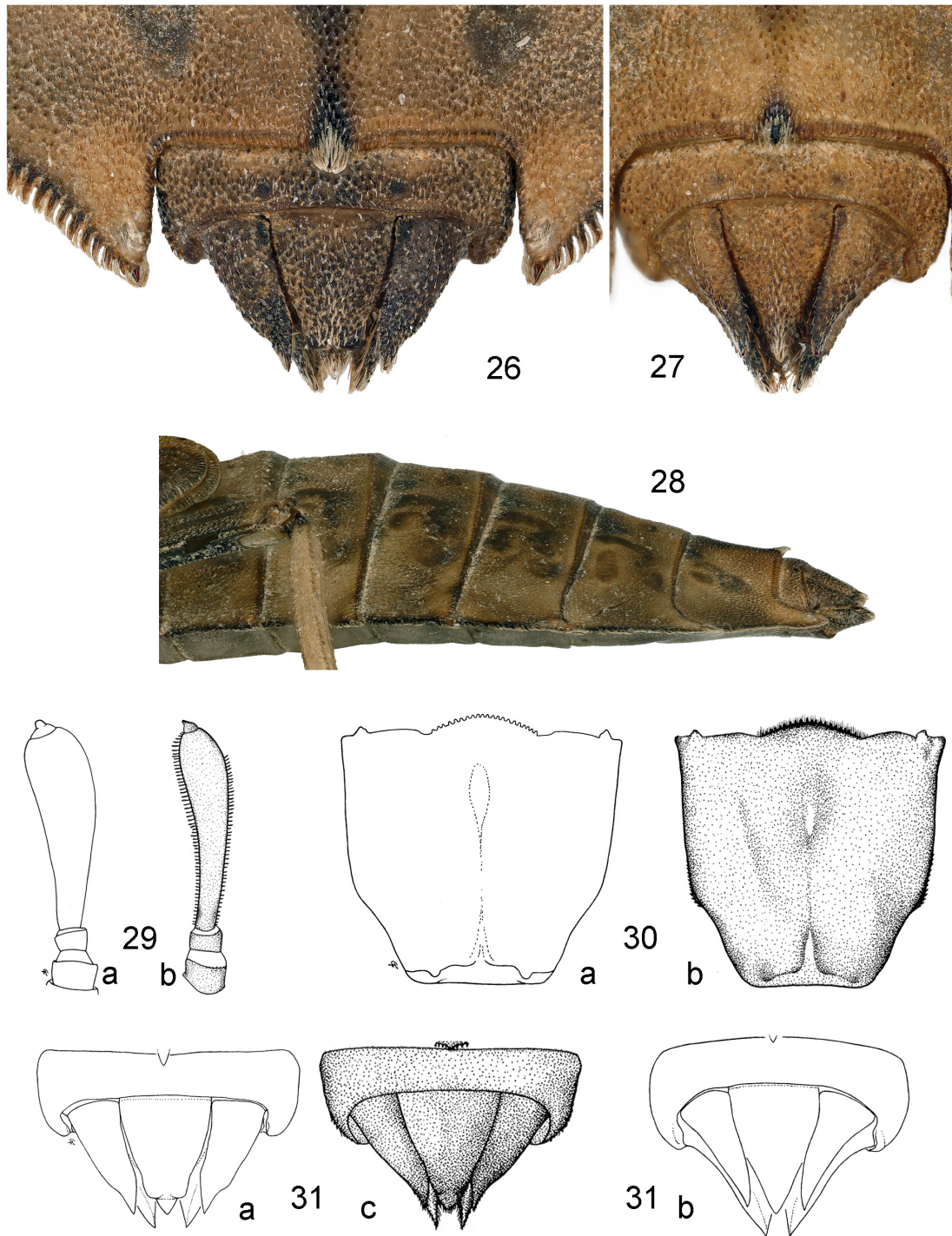


FIGURE 26–31. *Microgomphus* spp, F-0: (26–28), (29a), (30a), (31a,b) *Microgomphus farrelli* sp. nov., (29b), (30b), (31c) *Microgomphus svihleri* after Boonsoong & Chainthong (2014): (26) Detail of distal part of ♂ abdomen in dorsal view showing part of S9, S10 and anal pyramid; note the lateral margin of S9 with spine-like setae separated by soft whitish setae and the S9 median dorsal hook largely hidden by setae; (27) Detail of distal part of ♀ abdomen in dorsal view showing part of S9, S10 and anal pyramid; note the S9 median dorsal hook partly hidden by setae and anal pyramid distinctly different from that of male; (28) ♂ S4–10 and anal pyramid in lateral view; (29) Right antenna; (30) Prementum in ventral view; (31) Last abdominal segment and anal pyramid, a) ♂, b) ♀, c) ♂ by supposition (no indication of the sex in the original description).