



Erratum

<https://doi.org/10.11646/zootaxa.4472.3.11>

<http://zoobank.org/urn:lsid:zoobank.org:pub:D7EF19D2-55E5-41B9-86D9-F6DD73DA6520>

JENNIFER M. BOSCO & ANGELA CHUANG (2018) A new species of grass spider, *Agelenopsis riechertii*, from the Southwestern USA, with notes on its courtship behavior (Araneae: Agelenidae). *Zootaxa*, 4442: 579–583.

We made changes in the description of a new *Agelenopsis* spider species, *Agelenopsis riechertae*. Firstly, we declare the male holotype and a type repository to validate the species description, which was previously omitted. The original Latin name has been feminized from *Agelenopsis riechertii* to *Agelenopsis riechertae*.

The holotype has been assigned to a male specimen, DMNS ZA. 38751. Three paratypes have been declared, one male (DMNS ZA.38752), and two females (DMNS ZA.38753, DMNS ZA.38754), all collected with the holotype at the Balmorhea location at 30.94° N, 103.79° W. All specimens have been lodged at the Denver Museum of Nature & Science.

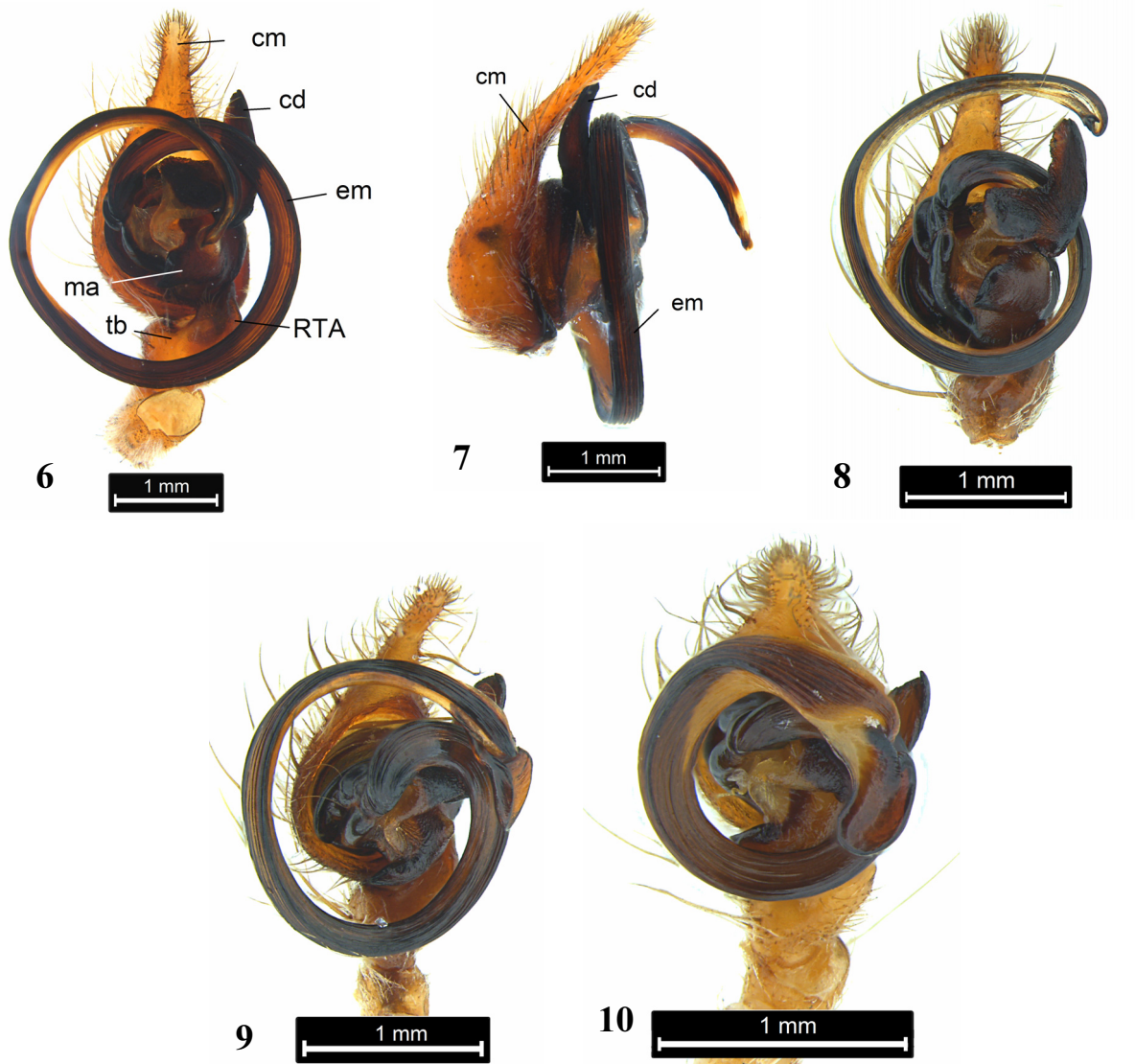
The species is renamed to *Agelenopsis riechertae*, which is latinized for a female, given that it is being named after Dr. Susan Riechert.

“*Agelenopsis lisa* Gertsch, unpublished materials” should be removed from the taxonomic section.

The following images are omitted from the manuscript.



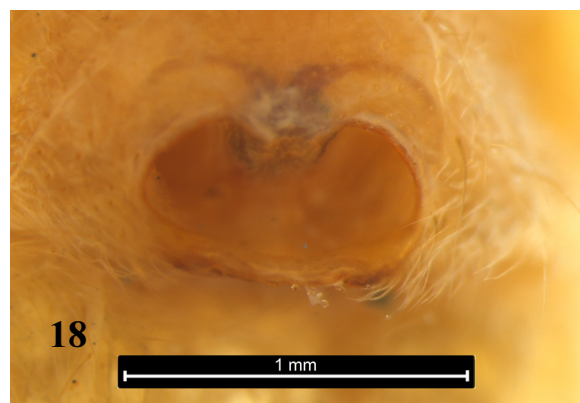
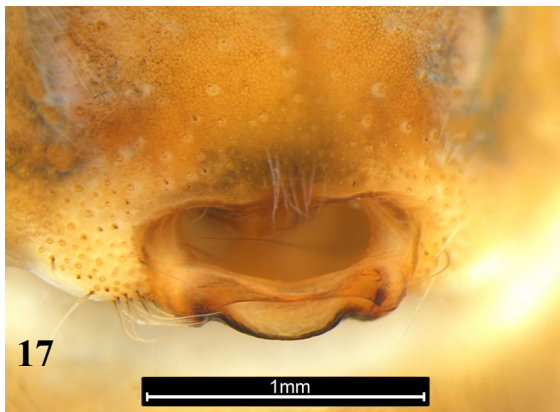
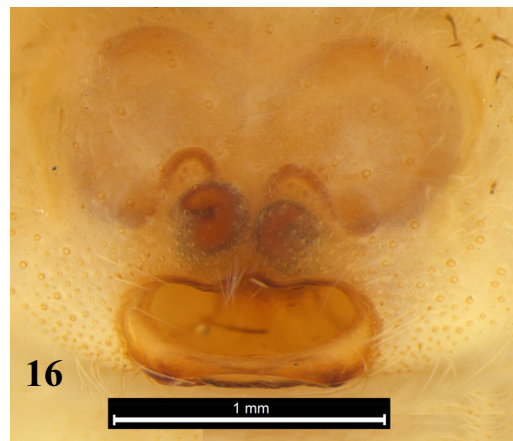
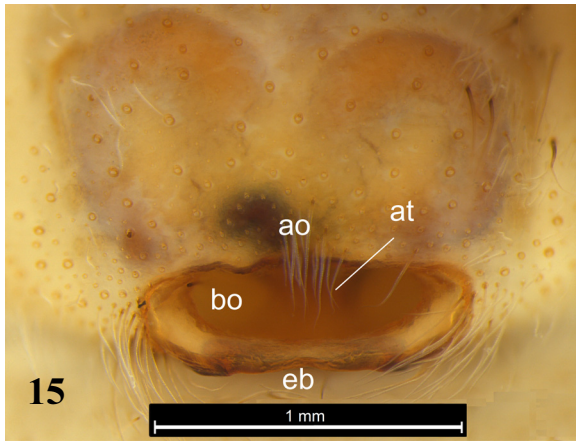
FIGURES 1–5. Photographs of *Agelenopsis riechertae* sp. nov., paratype female (DMNS ZA.38753); with a 1) live specimen, 2) ventral view of the opisthosoma and 3) prosoma, as well as a dorsal view of the 4) prosoma and 5) opisthosoma.



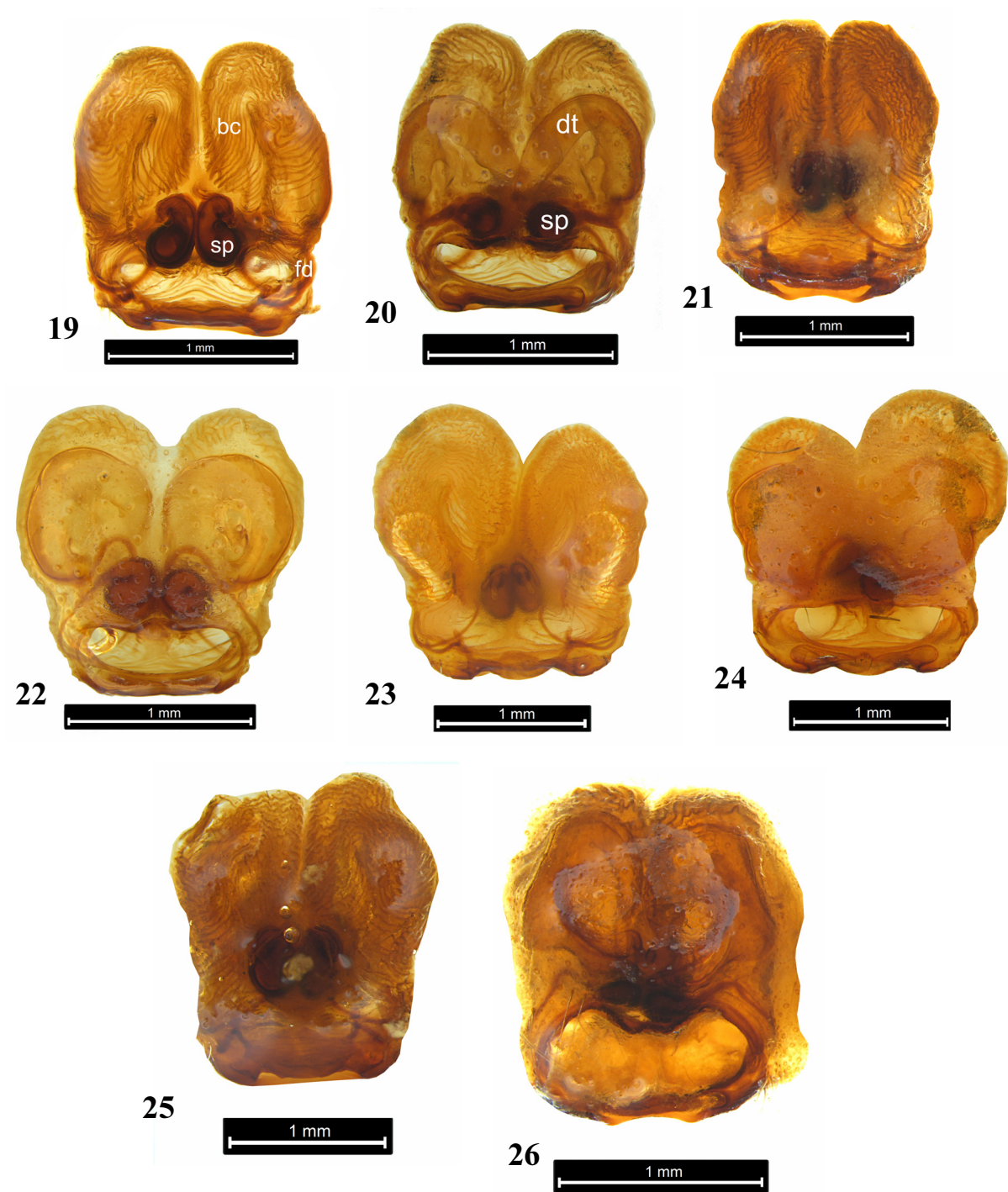
FIGURES 6–10. The pedipalp of *A. riechertae* sp. nov., holotype male (DMNS ZA. 38751). 6) Ventral and 7) lateral view of *A. riechertae*, compared to specimens of 8) *A. aperta*, 9) *A. spatula*, and 10) *A. aleenae*. Abbreviations: cd = conductor, cm = cymbium, em = embolus, ma = median apophysis, RTA = retrotibial apophysis, tb= palp tibia.



FIGURES 11–14. Dorsal and lateral views of the male embolic tip for 11) *A. riechertae* **sp. nov.**, holotype male (DMNS ZA. 38751), 12) *A. aperta*, 13) *A. spatula*, and 14) *A. aleenae*.



FIGURES 15–18. The epigyna of 15) *A. riechertae* sp. nov., paratype female (DMNS ZA.38753), 16) *A. aperta*, 17) *A. spatula*, and 18) *A. aleenae*. Abbreviations: ao = atrial opening, at = atrium, bo = bursa opening, eb = epigynal bridge.



FIGURES 19–26. Photographs of dissected epigyna with dorsal and ventral views respectively of 19–20) *A. riechertae* **sp. nov.**, paratype female (DMNS ZA.38753), 21–22) *A. aperta*, 23–24) *A. spatula*, and 25–26) *A. aleenae*. Abbreviations: bc = bursa copulatrix, dt = diverticle, fd = fertilization ducts, sp = spermatheca.

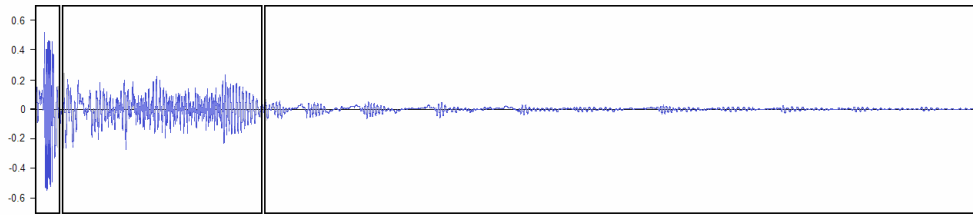


FIGURE 27. We recorded male *A. riechertae* on the webs of females with a Laser doppler vibrometer to document their courtship sequences, which involved waveforms of a) a web pulse; b) a period of abdomen wagging which are performed throughout courtship prior to web flexing; c) and a series of web flexes which usually occur immediately after abdomen wagging.