

https://doi.org/10.11646/zootaxa.4614.3.12
http://zoobank.org/urn:lsid:zoobank.org:pub:37A7720F-DD35-43E7-83F8-3B8F410DAA24

ANATOLY BOBROV, YANGMIN QIN & RICHARD J. PAYNE (2019) A new testate amoebae species *Planhoogenraadia wuchanica* sp. nov. from subtropical forest soils in Wuhan, central China *Zootaxa*, 4550: 289–294.

The authors regret to identify errors in Figure 1 (Page 290) and Figure 2 (Page 292) and in the titles of Table 1 and 2 of the published article [1]. The error in Figure 1 was an incorrect scale bar, the figure should be replaced by the new figure below.

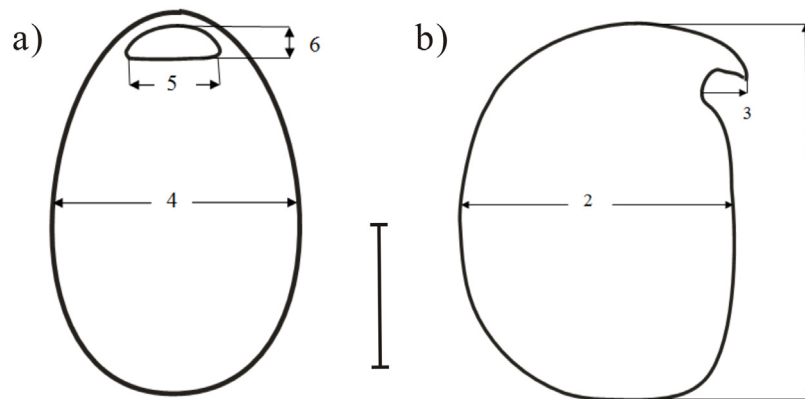


FIGURE 1. Outline of *Planhoogenraadia wuchanica* sp. nov. (1A, 1B) in ventral and lateral views. (1–6 characters of the shell measured (see Table 1). Scale bar is 50 μ m.

The error in Figure 2 was the inclusion of a different but close-related taxon in Figure 2 D, E, F. This is corrected in the new version of the figure below.

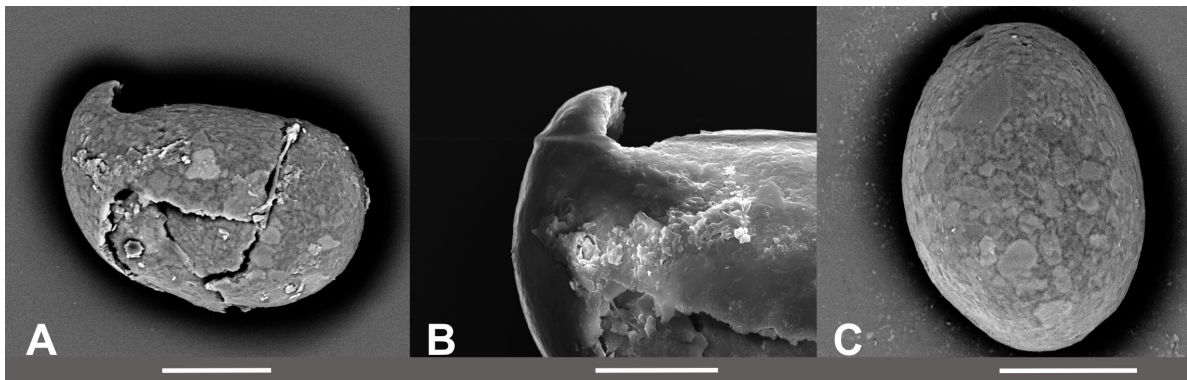


FIGURE 2. SEM images showing *Planhoogenraadia wuchanica* sp. nov. (A) lateral view; (B) the upper cap like structure; (C) dorsal view.). Scale bars: A, C 50 μ m, B, 30 μ m.

The error in the titles of table 1 and Table 2 was the mention of a second taxon not discussed in the published paper. These are corrected below.

TABLE 1. Morphometric characteristics of *Planhoogenraadia wuchanica* sp. nov. Measurements in μ m. SD—standard deviation; CV—coefficient of variation in %; Min—minimum; Max—maximum; N—number of individuals investigated.

TABLE 2. Comparison of *Planhoogenraadia wuchanica* sp. nov. with related species (L—length, W—width)