

<https://doi.org/10.11646/zootaxa.4772.3.11>

<http://zoobank.org/urn:lsid:zoobank.org:pub:A39C3FB1-A379-4502-963F-35E4AAE877EE>

CHARLES G. MESSING (2020) A revision of the unusual feather star genus *Atopocrinus* with a description of a new species (Echinodermata: Crinoidea). *Zootaxa*, 4731: 471–491.

Figure 11, missing from the previously published revision, is provided here. Also, “Description of pinnule articulations dissociated for scanning electron microscopy” (page 484 of the previously published version) incorrectly refers to some of the pinnular articulations in figure 11 as from the holotype (OMNH Iv2233). They are from the paratype OMNH Iv2448.

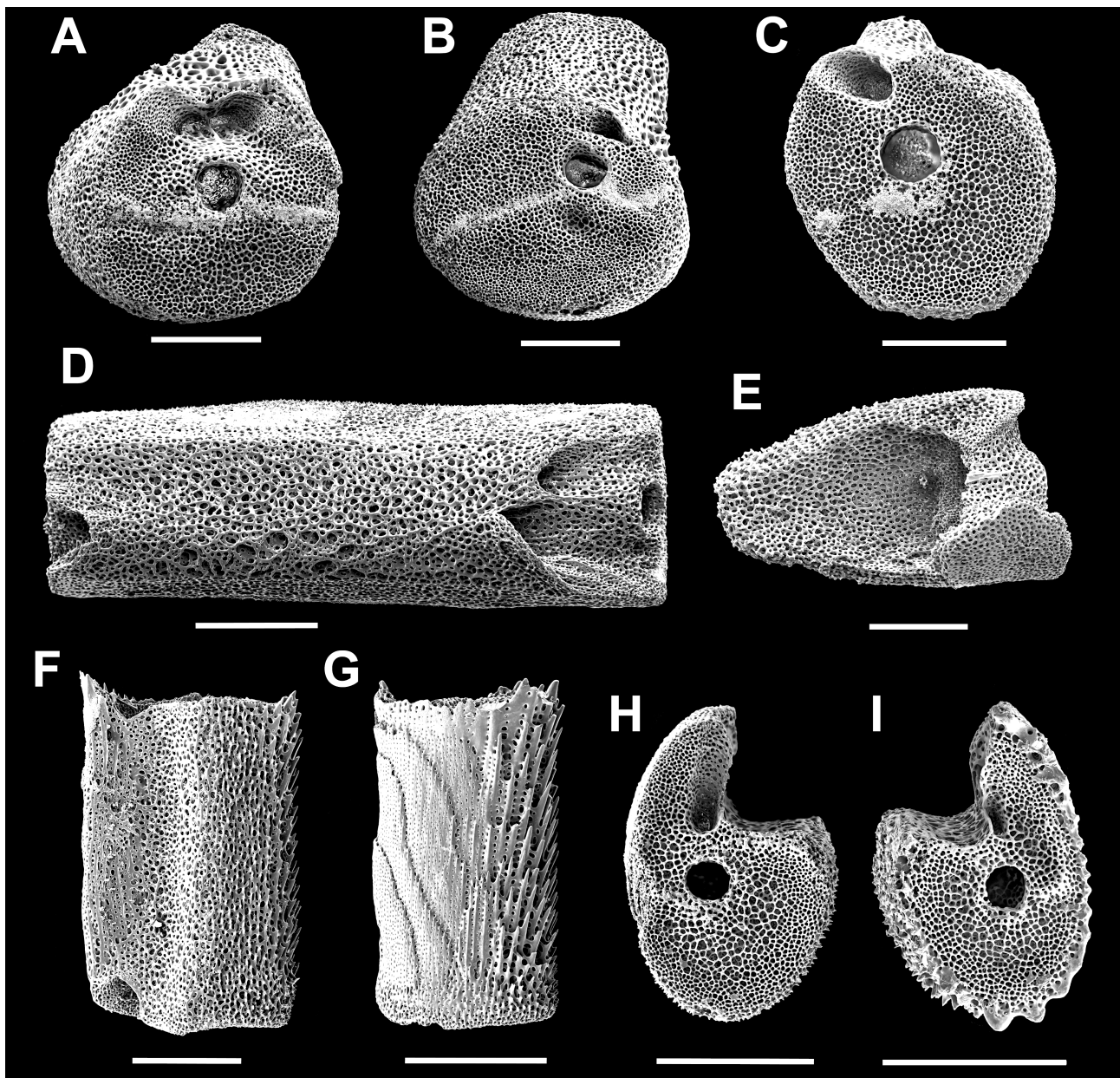


FIGURE 11. *Atopocrinus ojii* new species. SEM images. Pinnulars of proximal pinnules. A–C, E, H–I. Paratype (OMNH Iv2448). D, F, G. Paratype (USNM 1548291). A. P1(1) distal facet. B. P2(1) proximal facet. C. P2(3) distal facet. D. Long proximal pinnular, ambulacral view, proximal articulation at right. E. P2, proximal pinnular, broken to show hollow interior. F. Middle pinnular, ambulacral view, distal facet uppermost. G. Mid-distal pinnular, abambulacral view, distal facet uppermost. H. P2, middle pinnular, proximal facet. I. P2, distal pinnular, distal facet. Scale bars: 500 μ m.