



JIA-WEI SHEN & RICHARD A. B. LESCHEN (2020) Revision of *Eupines* King of New Zealand (Coleoptera: Staphylinidae: Pselaphinae: Goniaceritae) *Zootaxa*, 4777: 001–084.

On page 68, the Figure 44 is as the following:

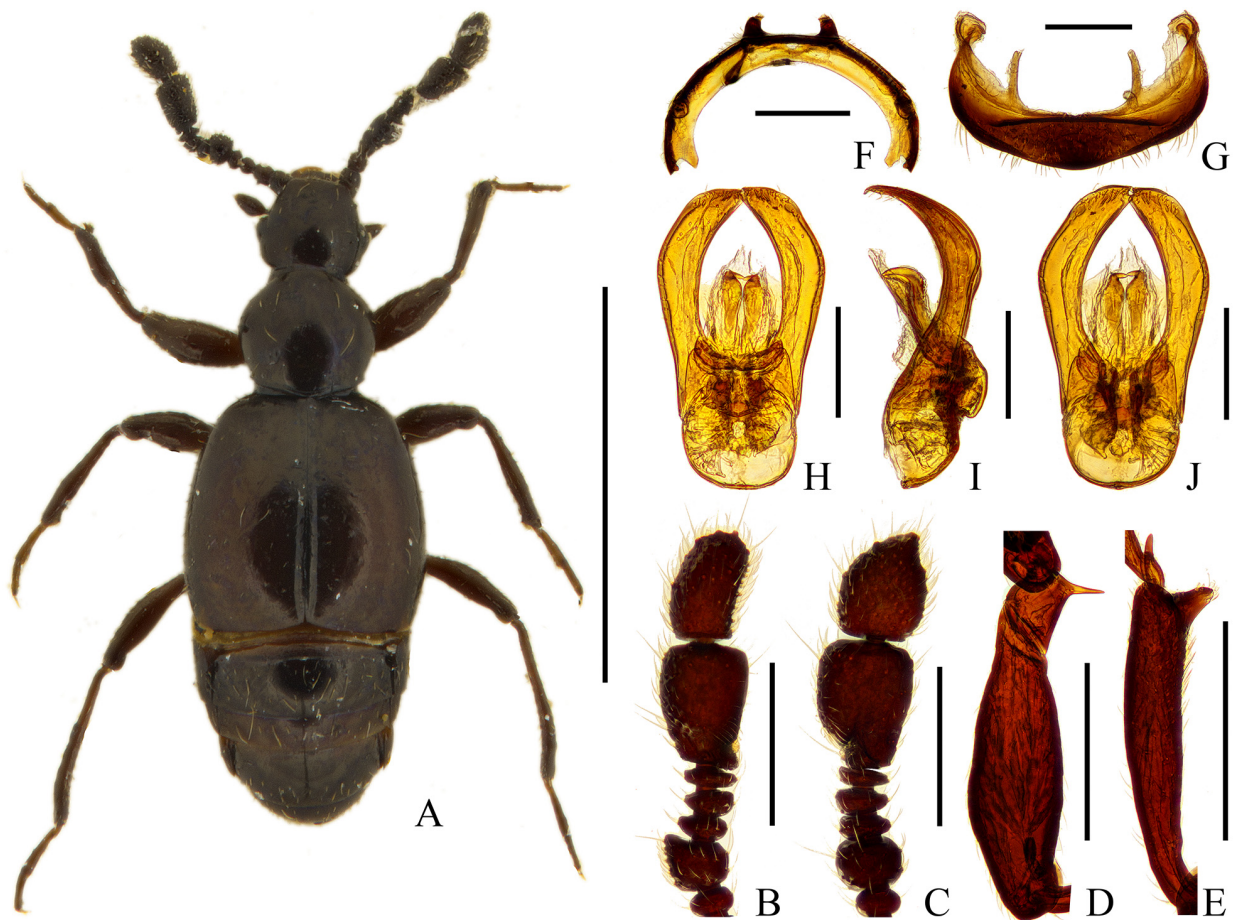


FIGURE 44. Diagnostic characters of *E. (B.) protibialis* sp. n. **A)** Habitus. **B)** Antenna, in dorsal view. **C)** Same, in lateral view. **D)** Protochanter. **E)** Protibia. **F)** Ventricle 2. **G)** Ventricle 6. **H)** Aedeagus, in dorsal view. **I)** Same, in lateral view. **J)** Same, in ventral view. Scale bars: A = 1 mm, B–F = 0.2 mm, G–J = 0.1 mm.