

<https://doi.org/10.11646/zootaxa.4852.5.11>

<http://zoobank.org/urn:lsid:zoobank.org:pub:22488EB8-30C8-4A70-951E-3B7CB2FF90A9>

**V. RAS, S. NEETHLING, A. ENGELBRECHT, A.C. MORANDINI, K.M. BAYHA, H. SKRYPZECK & M.J. GIBBONS (2020) There are three species of *Chrysaora* (Scyphozoa: Discomedusae) in the Benguela upwelling ecosystem, not two *Zootaxa*, 4778: 401–438.**

1) The new address for author K.M. BAYHA now to read as:

*Department of Invertebrate Zoology, Smithsonian Institution, National Museum of Natural History, Washington, DC, USA.*

[kmbayha@gmail.com](mailto:kmbayha@gmail.com);

<https://orcid.org/0000-0003-1962-6452>

2) Page 428, the photographs in figure 11 were mistakenly attributed to the wrong person and has subsequently been correctly attributed to Kolette Grobler, the original photographer.

3) This serves to correct the scales on Figure plates 4 and 5 (Pages 417–418). Details below:

Figure 4a: scale should read 1.92 cm;

Figure 4b: scale should read 1.4 cm;

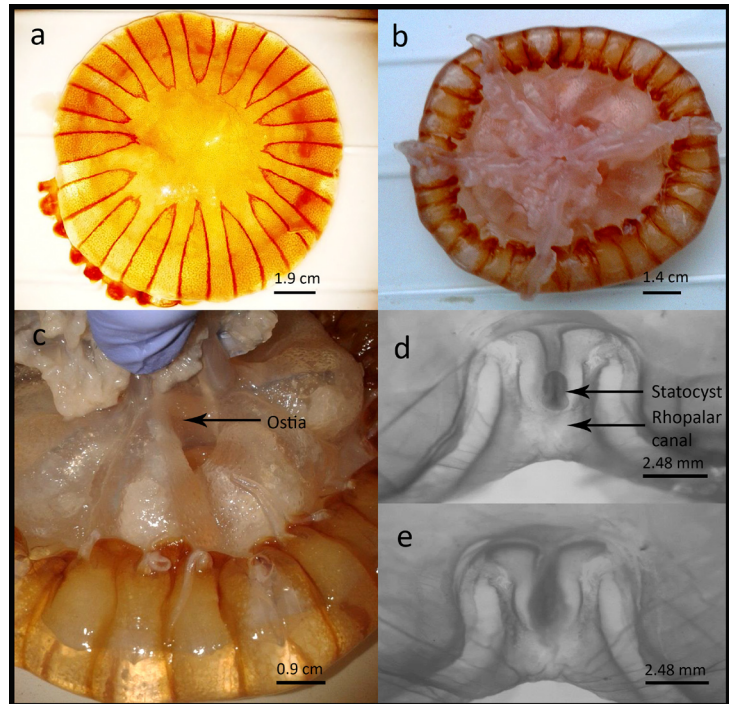
Figure 4c: scale should read 0.9 cm;

Figure 5a: scale should read 1.4 cm;

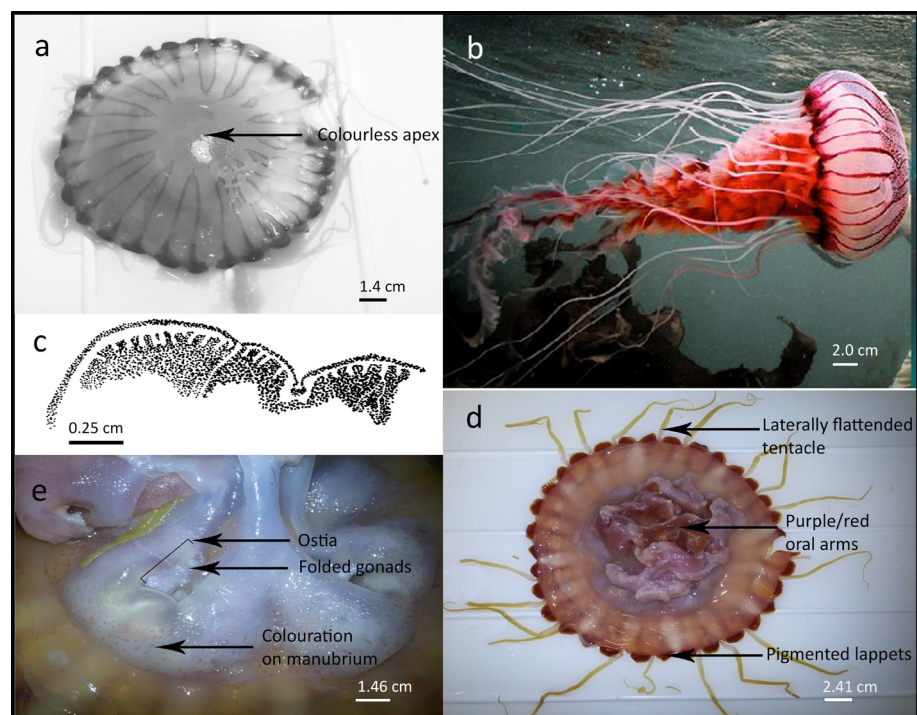
Figure 5b: scale should read 2 cm;

Figure 5d: scale should read 2.41 cm;

Figure 5e: scale should read 1.46 cm.



**Fig. 4**



**Fig. 5**