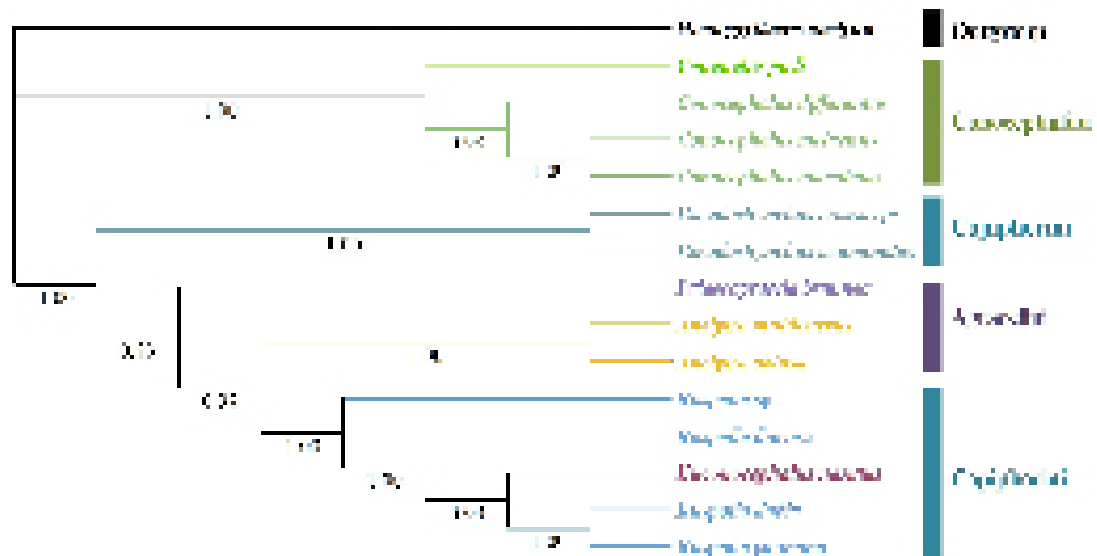


<https://doi.org/10.11646/zootaxa.5115.4.9>

<http://zoobank.org/urn:lsid:zoobank.org:pub:0327C119-9260-42B4-BC29-64D702992C7F>

**JING LIU, HAIYU LUO, XIANGYI LU & XUN BIAN (2021) New additions to the Chinese Agraeiini Redtenbacher, 1891 (Orthoptera, Tettigoniidae: Conocephalinae) with report the complete mitochondrial genome of *Palaeoagraecia brunnea* Ingrisch, 1998. *Zootaxa*, 5072: 238–254.**

The figure 13 is wrong and should be replaced by the following figure.



**Figure 13.** A phylogenetic tree obtained from bayesian inference analysis based on 13 protein-coding genes.