

***Zavrelia parapentatoma* (Chironomidae: Diptera), a new cryptic species from North America revealed by molecular methods**

ARMIN NAMAYANDEH^{1,*}, PATRICK L. HUDSON², EDRIS GHADERI³, WENDYLEE STOTT⁴

* Corresponding author

TABLE S1. List of taxa, codes, GenBank or BOLD accessions.

Species	NCBI	BOLD
<i>Stempellinella fimbriata</i>		ASDMT524-11
<i>Stempellinella fimbriata</i>		ASDMT550-11
<i>Stempellinella fimbriata</i>		BACZP1693-16
<i>Stempellinella fimbriata</i>	JN290883	BBDCM792-10
<i>Stempellinella brevis</i>	HQ551528	ATNA548-10
<i>Stempellinella brevis</i>		ATNA548-15
<i>Stempellinella edwardsi</i>		BSCHI247-17
<i>Stempellinella edwardsi</i>		CHOSF144-11
<i>Stempellinella</i> sp.	KR659992.1	
<i>Stempellinella</i> sp.		AGMPK183-18
<i>Stempellinella</i> sp.	KR277425	CNKJA031-14
<i>Zavrelia parapentatoma</i> sp. nov.	OQ301917	ERSTU001-23
<i>Zavrelia parapentatoma</i> sp. nov.	OQ301918	ERSTU002-23
<i>Zavrelia pentatoma</i>		BSCH1552-17
<i>Zavrelia pentatoma</i>		BSCH1553-17
<i>Zavrelia pentatoma</i>		MIDGE200-06
<i>Zavrelia pentatoma</i>		LEFIJ3303-16
<i>Zavrelia pentatoma</i>	MZ657633	
<i>Zavrelia pentatoma</i>	MZ657638	

TABLE S2. Kimura 2-Parameter (K2P) average interspecific distances obtained in MEGA X for the *Stempellinella*

	<i>S. fimbriata</i>	<i>S. brevis</i>	<i>S. edwardsi</i>
<i>S. fimbriata</i>			
<i>S. brevis</i>	12.42		
<i>S. edwardsi</i>	12.69	14.51	
<i>S. sp.</i>	13.58	15.27	9.92

***Zavrelia parapentatoma* (Chironomidae: Diptera), a new cryptic species from North America revealed by molecular methods**

ARMIN NAMAYANDEH^{1,*}, PATRICK L. HUDSON², EDRIS GHADERI³, WENDYLEE STOTT⁴

* Corresponding author

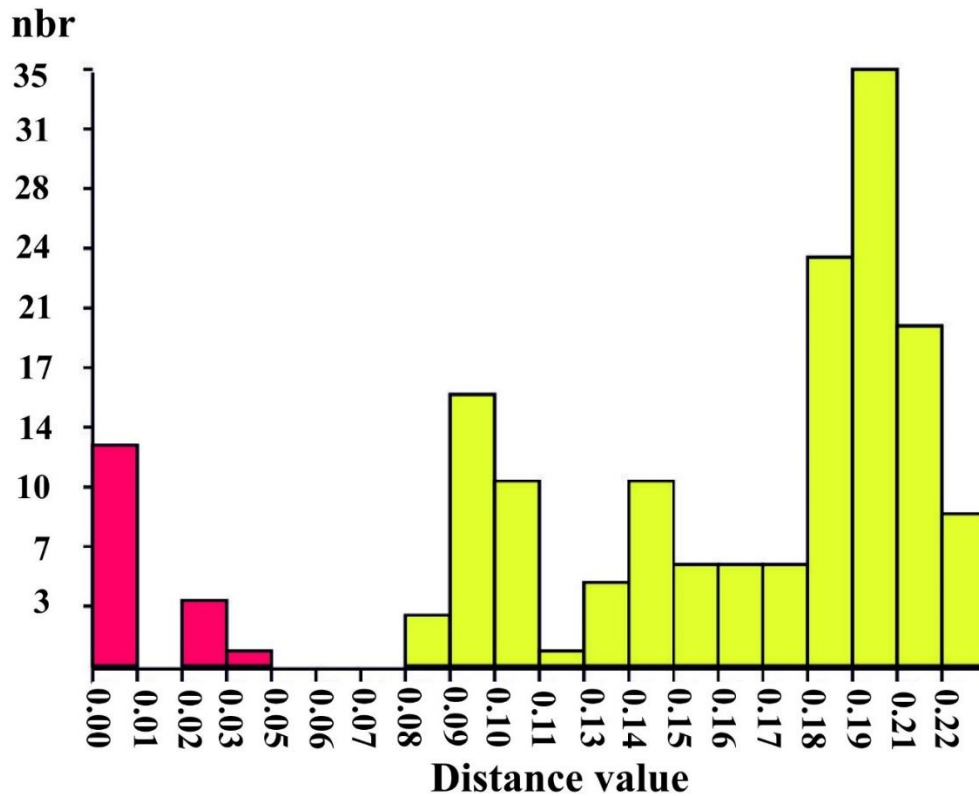


FIGURE S1. Histogram of genetic distance estimates from ASAP (Assemble Species by Automatic Partitioning) for a partition analysis of 19 cytochrome oxidase subunit1 sequences of the *Zavrelia* and *Stempellinella* species. nbr = number of runs.