



IRFAN MUHAMMAD, WANG LU-YU & ZHANG ZHI-SHENG (2023) One new genus and nine new species of Linyphiidae spiders from Yintiaoling Nature Reserve, Chongqing of China. *Zootaxa*, 5257 (1), 082–114.

On page 82, in abstract, “*Caracladus daguanshanensis* sp. n.” specific name should be modified as “*Caracladus daguanensis* sp. n.”.

On page 82, in abstract, “*Sinogone caesuma* gen. & sp. n.” specific name should be modified as “*Sinogone caesum* gen. & sp. n.”.

On page 82, in key words, “sheet-web, south China” should be modified as “sheet-web spiders”.

On page 83, remarks of Genus *Caracladus* Simon, 1884 in line 2 the “descript” is incorrect and corrected as “description”.

On page 83, in “*Caracladus daguanshanensis* sp. n. (大官支头蛛)”, “*daguanshanensis*” should be modified as “*daguanensis*”.

On page 83, the etymology of *Caracladus daguanensis* sp. n. “This epithet is derived from the type locality”, should be modified as “This epithet is derived from the type locality; adjective”.

On page 83, *Caracladus daguanensis* sp. n. (大官支头蛛) **diagnosis, the species name** “*C. daguanshanensis* sp. n.” should be modified as “*C. daguanensis* sp. n.”

On pages 84 to 111, figure legends of 1–26 “sp. nov.” in the whole text should be modified as “sp. n.”.

On page 84, figure 1, labelling format is inconsistent and MT is missing. From figure legend “Arrow in pro-lateral view indicating the position of median tooth of distal suprategular apophysis on undissected palp” should be removed as provided below.

On page 85, figure 2, labelling format is inconsistent and blur, it should be replaced with the figure provided below.

On page 86, figure 3, labelling format is inconsistent and replace with the figure provided below.

On page 87, figure 4, labelling format is inconsistent. In figure legend, should add, “Photos taken by Qian-Le Lu.”

On page 88, figure 5, labelling format is inconsistent and replace with the figure provided below.

On page 89, in etymology of *Centromerus alatus* sp. n. the Latin adjective “*alatus*” meaning “wing” should be corrected as “winged”.

On page 89, figure 6, labelling format is inconsistent and replace with the figure provided below. In figure legend add “Photo of live spider taken by Qian-Le Lu.”

On page 90, the etymology of *Dicristatus modaoxiensis* sp. n. “This epithet is derived from the type locality”, should be modified as “This epithet is derived from the type locality; adjective”.

On page 91, figure 7, labelling format is inconsistent and blur, it should be replaced with the figure provided below.

On page 92, figure 8, labelling format is inconsistent and blur, it should be replaced with the figure provided below.

On page 93, figure 9, labelling format is inconsistent and blur, it should be replaced with the figure provided below.

On page 93, remarks of Genus *Hypselistes* Simon, 1894, “*Hypselistes* comprises 10 species distributed across in China, Japan, Kazakhstan, Mongolia, Russia, and USA, including three species reported from China (WSC, 2023).”, should be corrected as “*Hypselistes* comprises 10 species distributed in China, Japan, Kazakhstan, Mongolia, Russia, and USA, including three species reported from China (WSC 2023)”.

On page 94, figure 10, labelling format is inconsistent and blur, it should be replaced with the figure provided below.

On page 95, figure 11, labelling format is inconsistent and blur, it should be replaced with the figure provided below.

On page 96, figure 12, labelling format is inconsistent and blur, it should be replaced with the figure provided below.

On page 97, figure 13, labelling format is inconsistent and blur, it should be replaced with the figure provided below.

On page 98, figure 14, labelling format is inconsistent and blur, it should be replaced with the figure provided below.

On page 99, figure 15, labelling format is inconsistent and blur, it should be replaced with the figure provided below.

On page 100, remarks of Genus *Ryojius* Saito & Ono, 2001, “*Ryojius* comprises three species distributed China, Japan, and Korea, including one species reported from China (WSC, 2023)”, should be corrected as “*Ryojius* comprises three species distributed in China, Japan, and Korea, including one species reported from China (WSC 2023)”.

On page 100, in etymology of *Ryojius flosculus* **sp. n.** the Latin noun “*flosculus*” meaning “flower” should be corrected as “little flower”.

On page 101, figure 16, labelling format is inconsistent and blur, it should be replaced with the figure provided below.

On page 102, remarks of Genus *Shaanxinus* Tanasevitch, 2006, “*Shaanxinus* comprises 16 species distributed China, and Vietnam (WSC, 2023).”, should be corrected as “*Shaanxinus* comprises 16 species distributed in China, and Vietnam (WSC 2023)”. And, “Lin *et al.* (2019) described 13 species from Taiwan” should be corrected as “Lin *et al.* (2019) described 13 species from Taiwan of China”.

On page 102, the etymology of *Shaanxinus shizhuziensis* **sp. n.** “This epithet is derived from the type locality”, should be modified as “This epithet is derived from the type locality; adjective”.

On page 103, the text is overlapped with the figure 17, “same as in male. Abdomen 2.28 long, 1.37 wide, oval, other characters same as in male.” should be moved to the end of page 102.

On page 103, figure 17, labelling format is inconsistent and blur, it should be replaced with the figure provided below.

On page 104, figure 18, labelling format is inconsistent and blur, it should be replaced with the figure provided below.

On page 104, figure 19 legend, “E Vulva, anterior view E Epigyne, posterior view” should be modified as “E Vulva, anterior view F Epigyne, posterior view”.

On page 105, figure 20, labelling format is inconsistent and blur, it should be replaced with the figure provided below.

On page 105, “Type species: *Sinogone caesuma* **sp. n.**”, should be modified as “Type species: *Sinogone caesum* **sp. n.**”.

On page 105, “**Composition.** Since *Sinogone caesuma* **sp. n.** doesn't fit into any known Erigoninae genera, we propose *Sinogone* **gen. n.** to accommodate the new species.”, should be modified as “**Composition.** Since *Sinogone caesum* **sp. n.** doesn't fit into any known Erigoninae genera, we propose *Sinogone* **gen. n.** to accommodate the new species.”

On page 106, figure 21 blur, labelling format is inconsistent and species name incorrect. It should be replaced with the figure and legend provided below.

On page 107, in the etymology of *Sinogone caesuma* **sp. n.**, as “*caesum*” is a noun, the ending stays unchanged and the species name modified as, “*Sinogone caesum* **sp. n.**”.

On page 107, figure legend of figure 22, “*Sinogone caesuma* **sp. nov.**, ...”, “*caesuma*” should be modified as “*caesum*”.

On page 108, figure 23 blur, labelling format is inconsistent and species name incorrect. It should be replaced with the figure and legend provided below.

On page 109, figure 24, labelling format is inconsistent and blur, it should be replaced with the figure provided below.

On page 110, figure 25, labelling format is inconsistent and blur, it should be replaced with the figure provided below.

On page 111, the etymology of *Walckenaeria hongqiensis* sp. n. “This epithet is derived from the type locality”, should be modified as “This epithet is derived from the type locality; adjective”.

On page 111, figure 26, labelling format is inconsistent and blur, it should be replaced with the figure provided below.

On page 112, figure 27, blur and it should be replaced with the figure provided below.

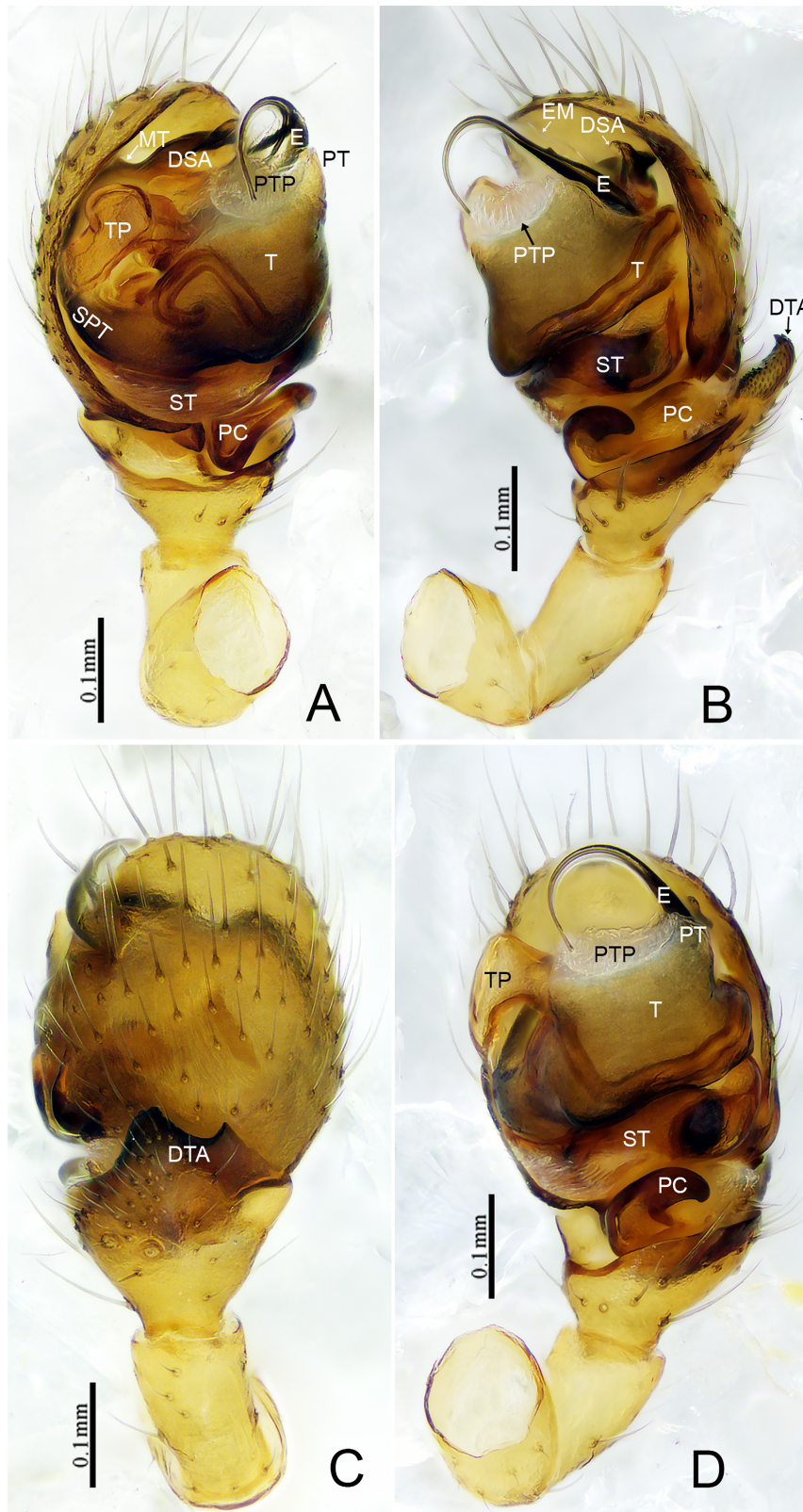


FIGURE 1. *Caracladus daguanensis* sp. n., male holotype left palp. **A** prolateral view **B** retrolateral view **C** dorsal view **D** ventral view.

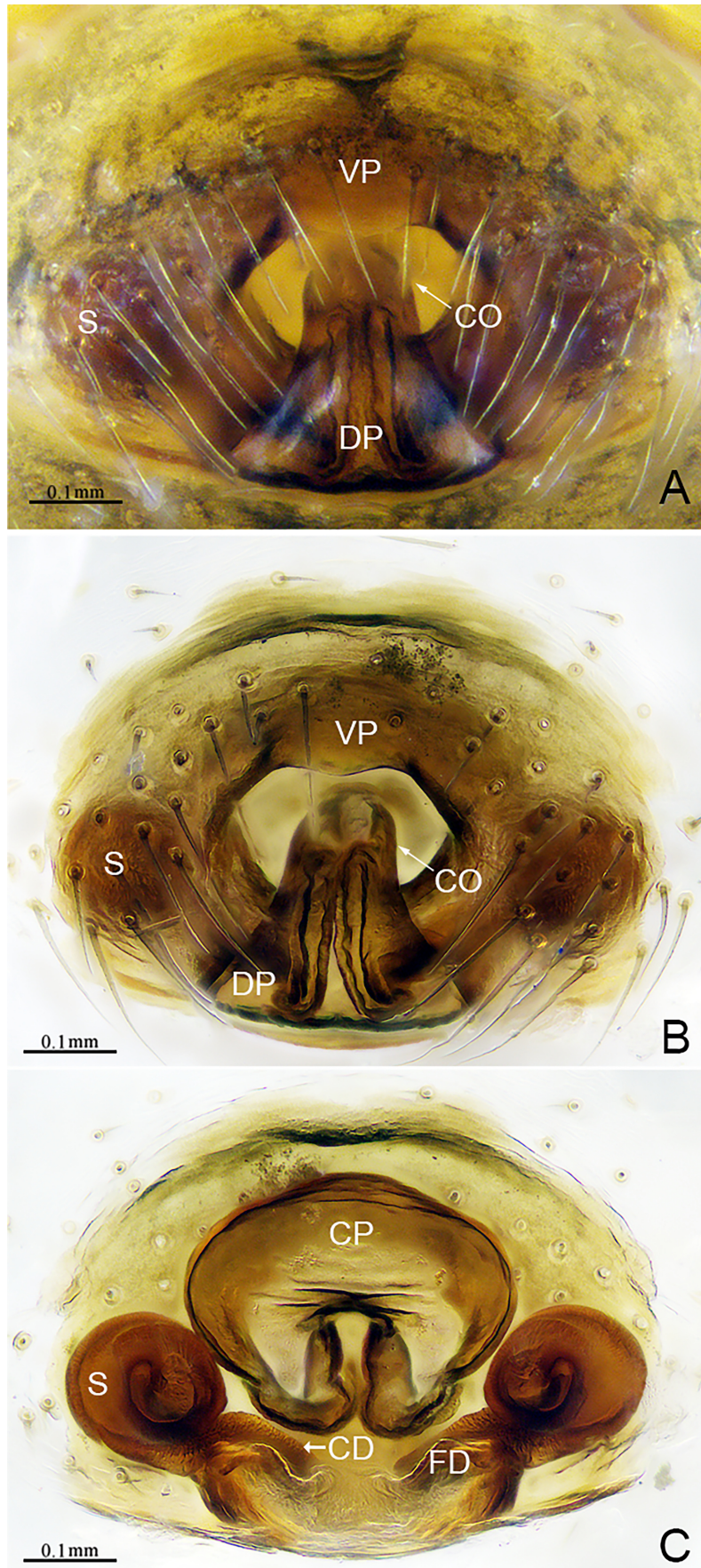


FIGURE 2. *Caracladus daguanensis* sp. n., female epigyne (one of paratypes). **A, B** Epigyne, ventral view, **C** Vulva, dorsal view.

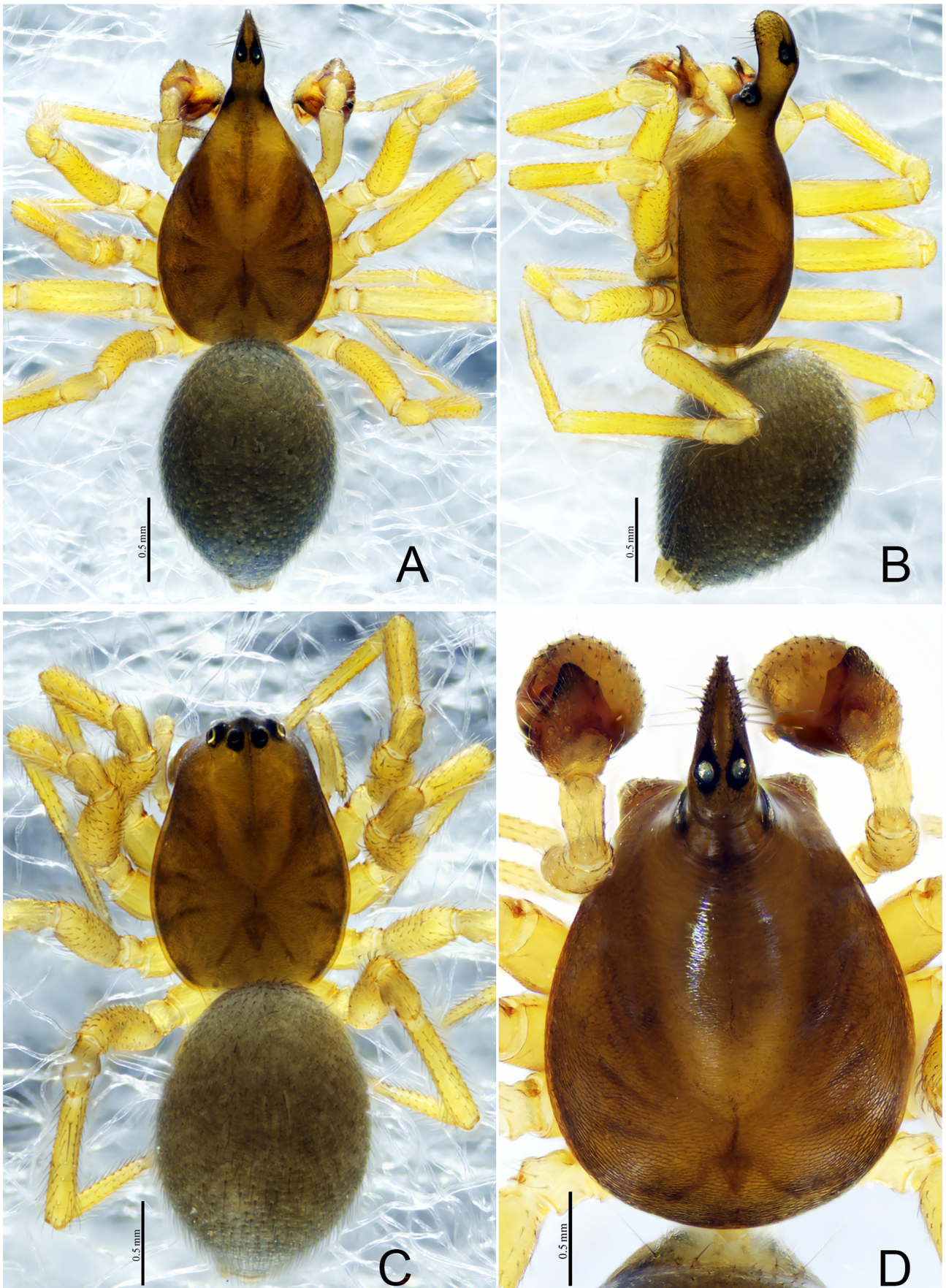


FIGURE 3. *Caracladus daguanensis* sp. n., male holotype (A, B, D), female paratype (C). **A**, **C** habitus, dorsal view **B** habitus, lateral view **B** habitus, cephalothorax dorsal view.



FIGURE 4. *Caracladus daguanensis* **sp. n.**, male holotype (A, B), female paratype (C). A living habitus, lateral view B, C living habitus, dorsal view. (Photos taken by Qian-Le Lu).

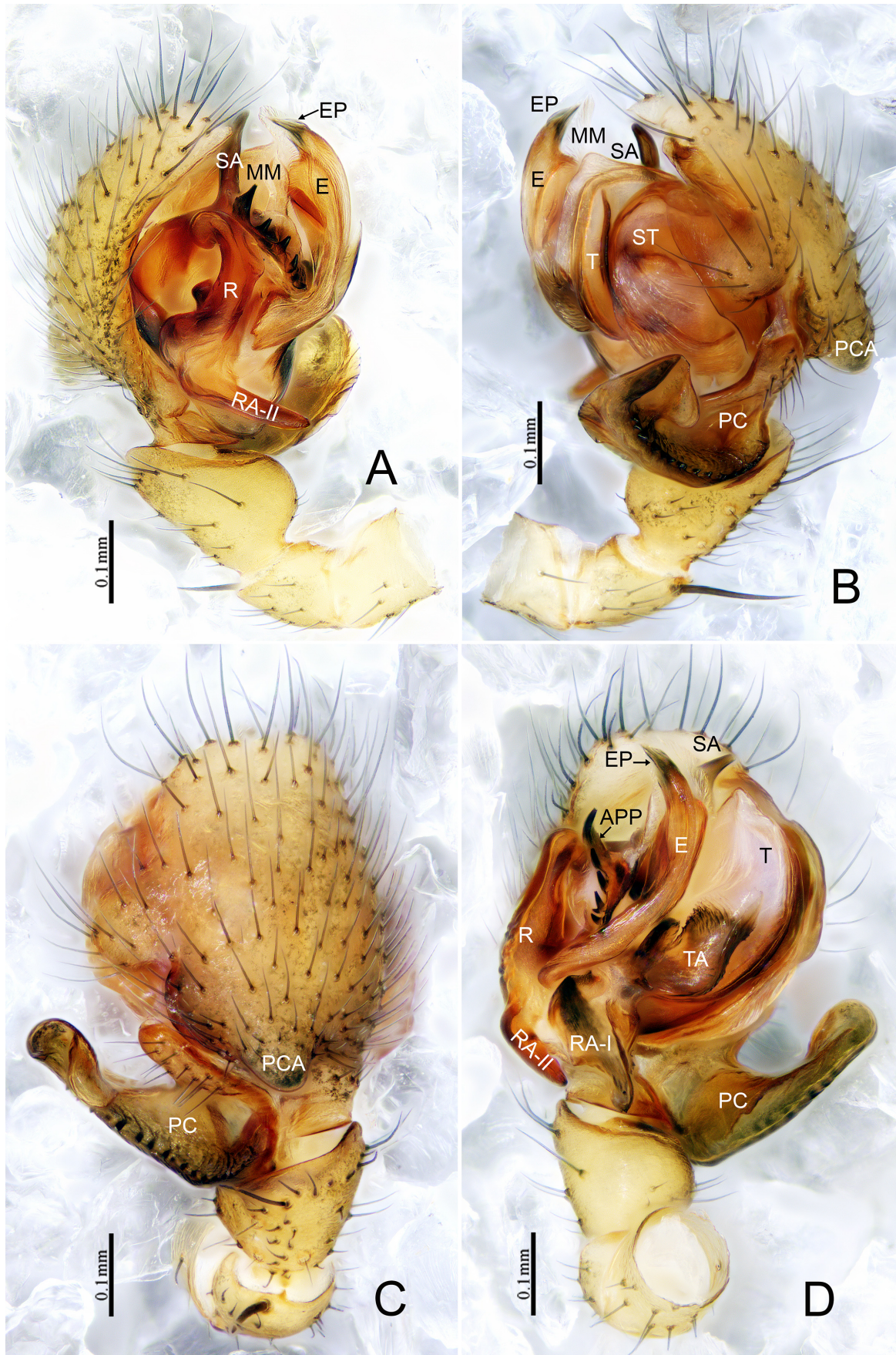


FIGURE 5. *Centromerus alatus* sp. n., male holotype left palp. **A** prolateral view **B** retrolateral view **C** dorsal view **D** ventral view.



FIGURE 6. *Centromerus alatus* sp. n., male holotype. **A** habitus, dorsal view **B** living habitus, dorsal view. (Live photo taken by Qian-Le Lu).

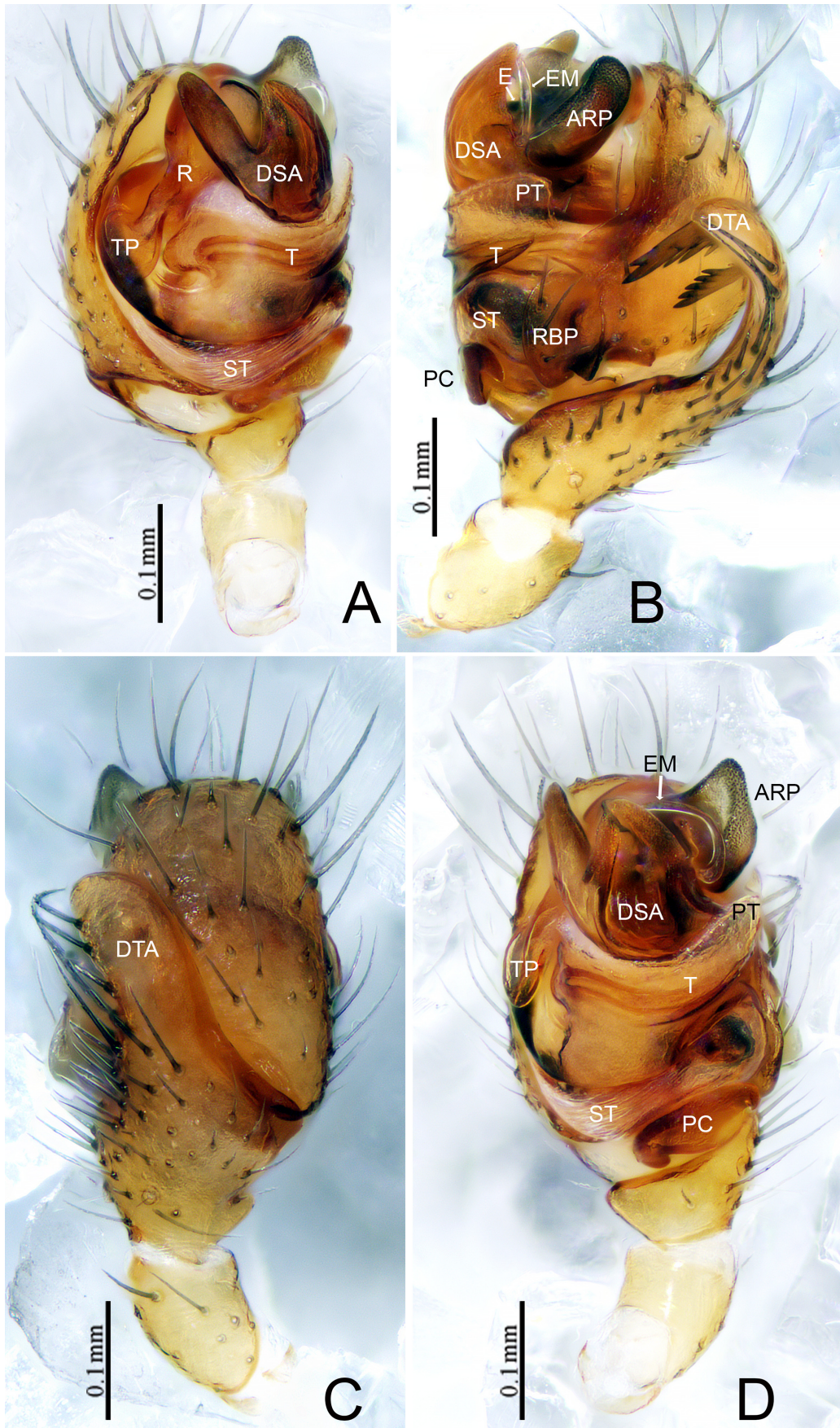


FIGURE 7. *Dicristatus modaoxiensis* sp. n., male holotype left palp. **A** prolateral view **B** retrolateral view **C** dorsal view **D** ventral view.

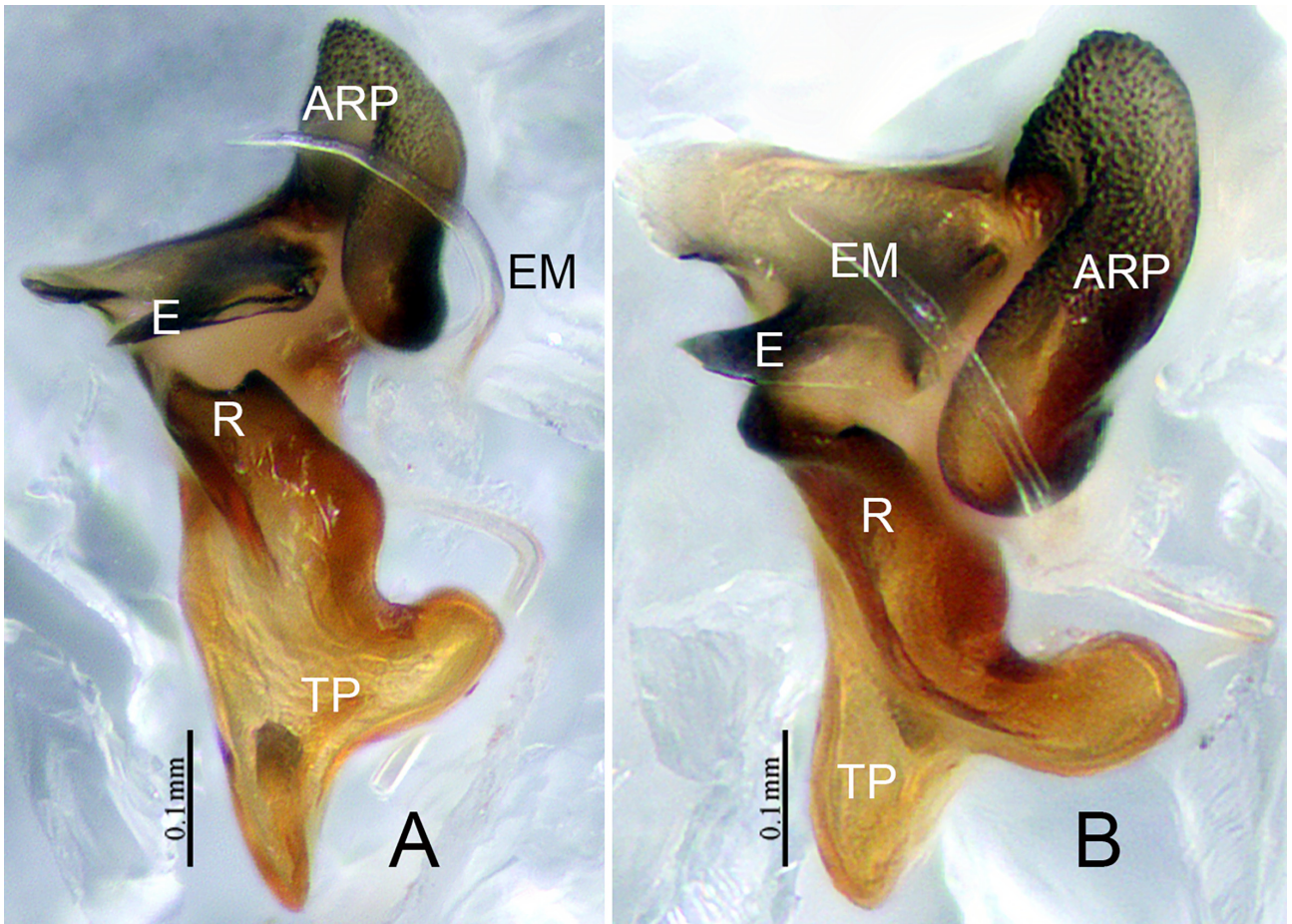


FIGURE 8. *Dicristatus modaoxiensis* sp. n., male (one of paratypes, left palp). A, B Embolic division.

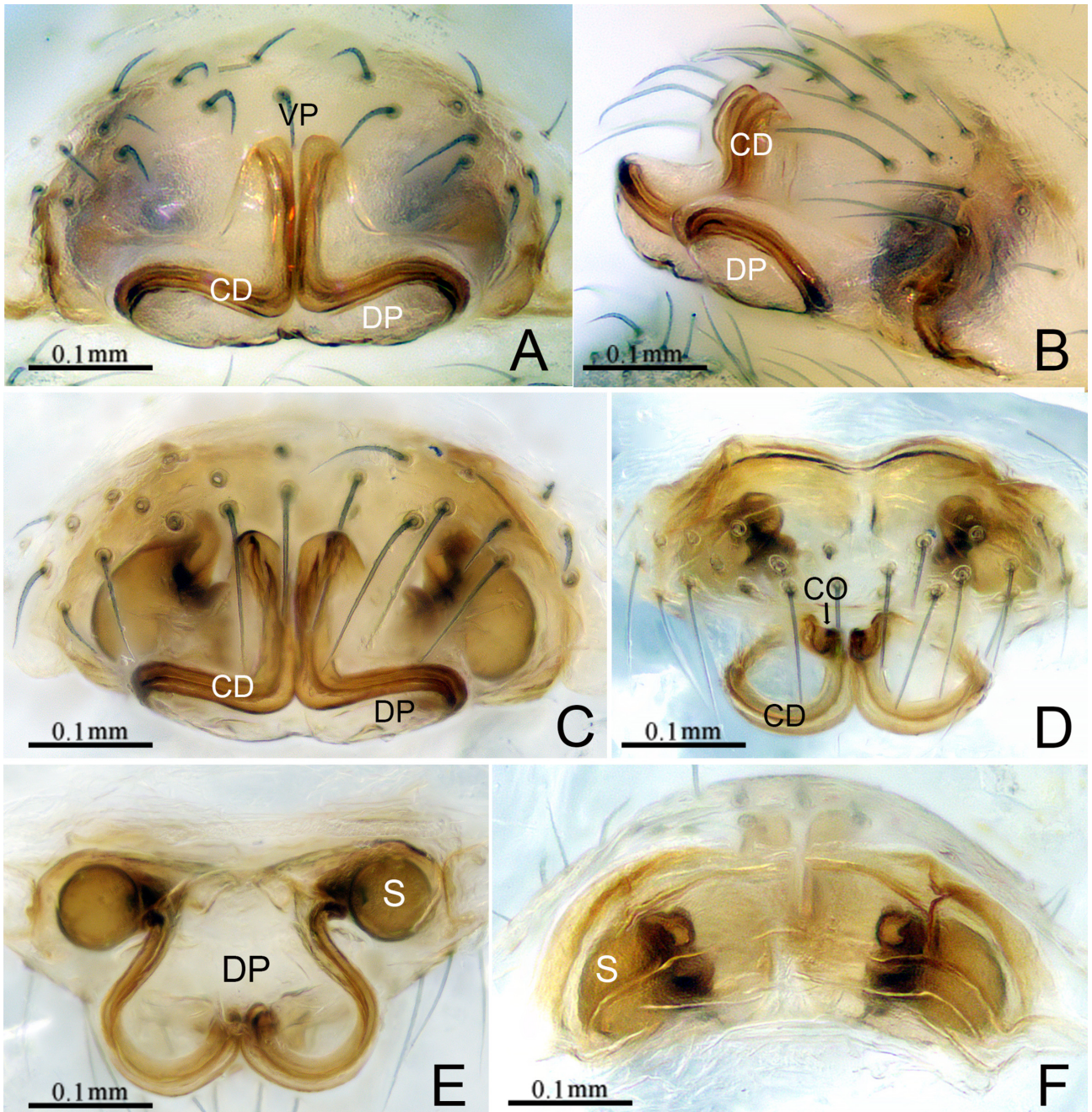


FIGURE 9. *Dicristatus modaoxiensis* sp. n., female (one of paratypes). A, C, D Epigyne, ventral view, B Epigyne, lateral view, E Vulva, dorsal view F Vulva, anterior view.

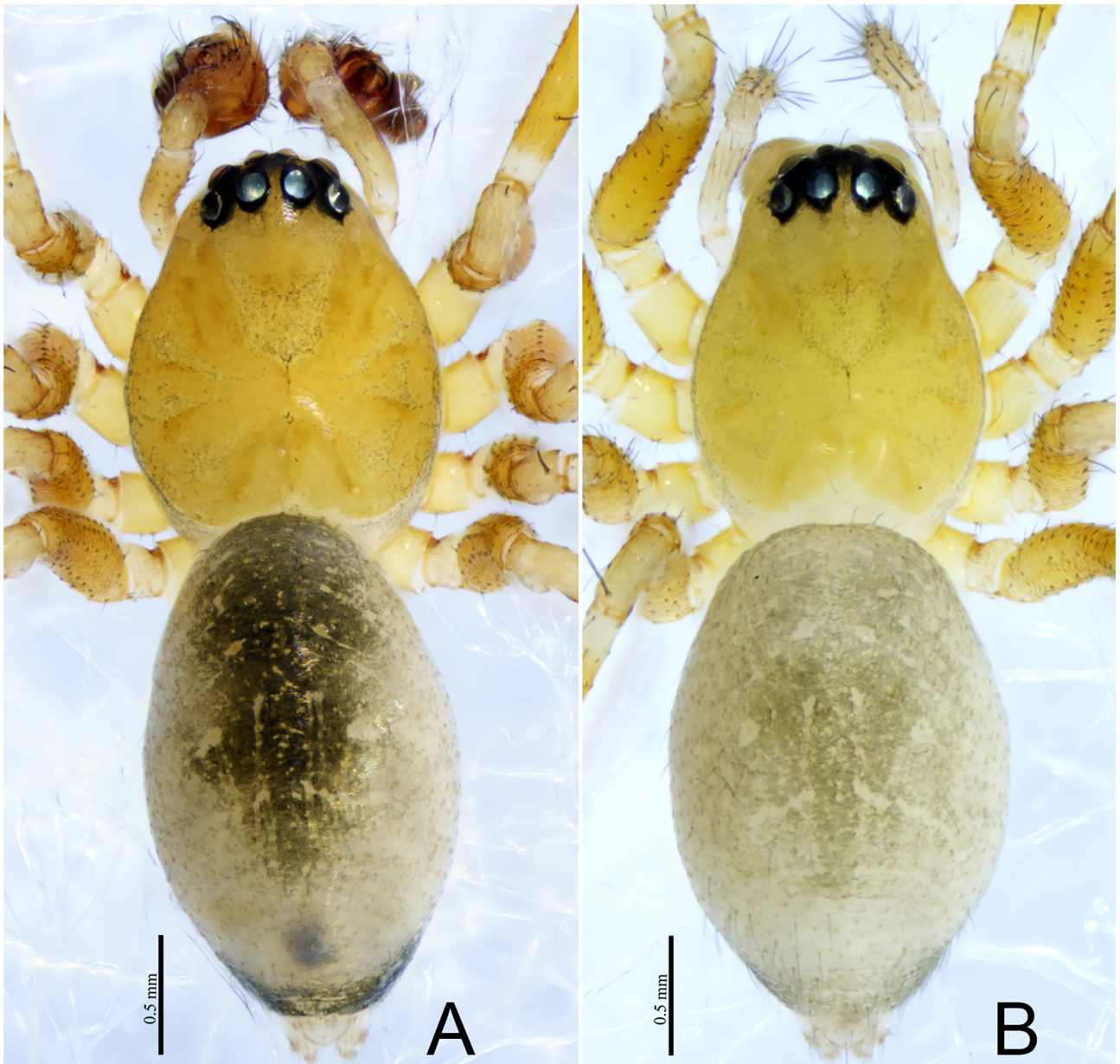


FIGURE 10. *Dicristatus modaoxiensis* sp. n., male holotype (A), female paratype (B). A, B habitus, dorsal view.

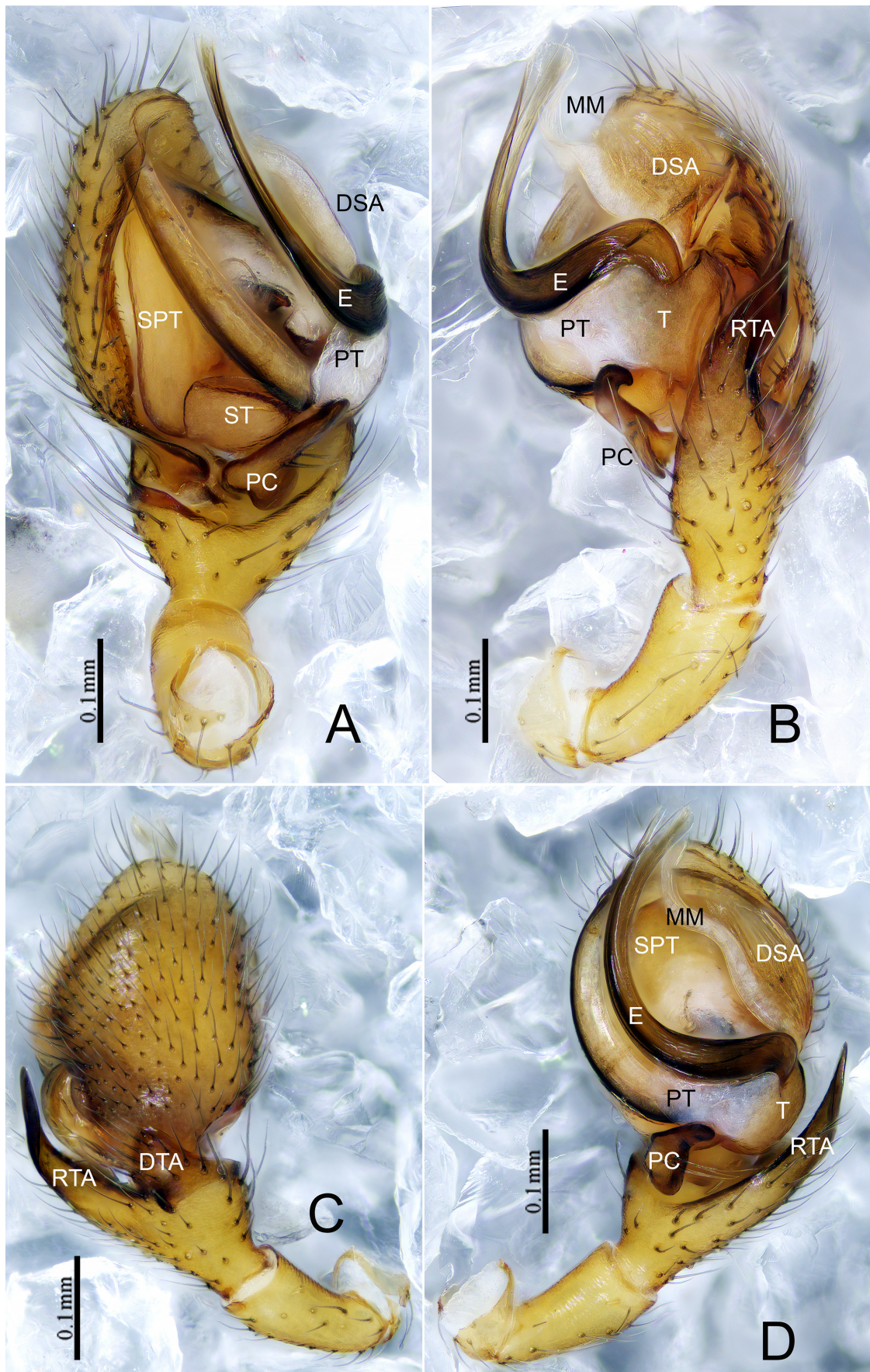


FIGURE 11. *Hypselistes arcus* sp. n., male holotype left palp. **A** prolateral view **B** retrolateral view **C** dorsal view **D** ventral view.

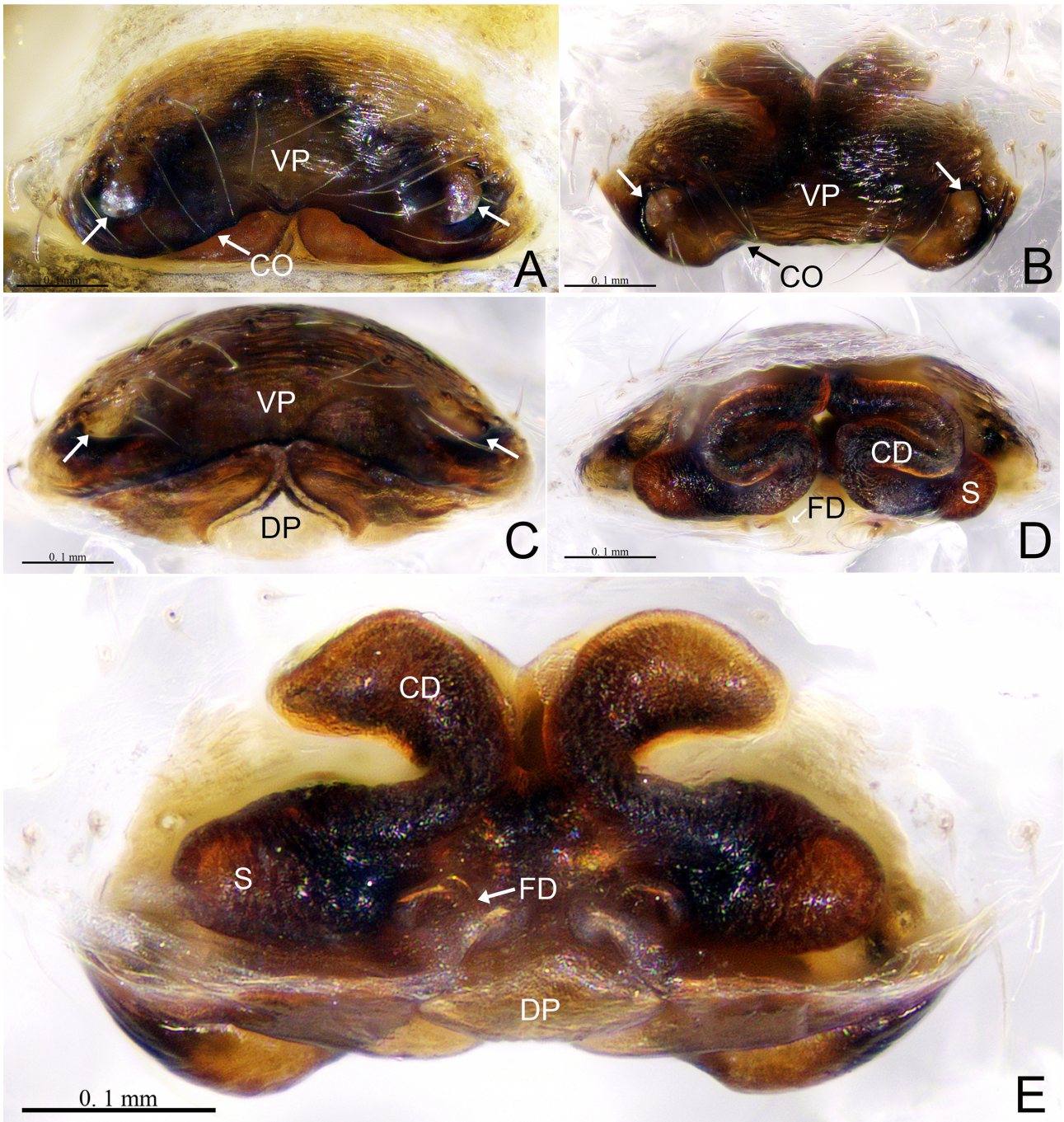


FIGURE 12. *Hypselistes arcus* sp. n., female (one of paratypes). **A, B** Epigyne, ventral view, **C** Epigyne, posterior view, **D** Vulva, anterior view **E** Vulva, dorsal view. Arrows indicating the depression posteriorly in ventral plate.



FIGURE 13. *Hypselistes arcus* sp. n., male holotype (A, B), female paratype (C). A, C habitus, dorsal view B habitus, lateral view. Arrows indicating the cephalic secretions dried out in the cephalic lobe of holotype male.

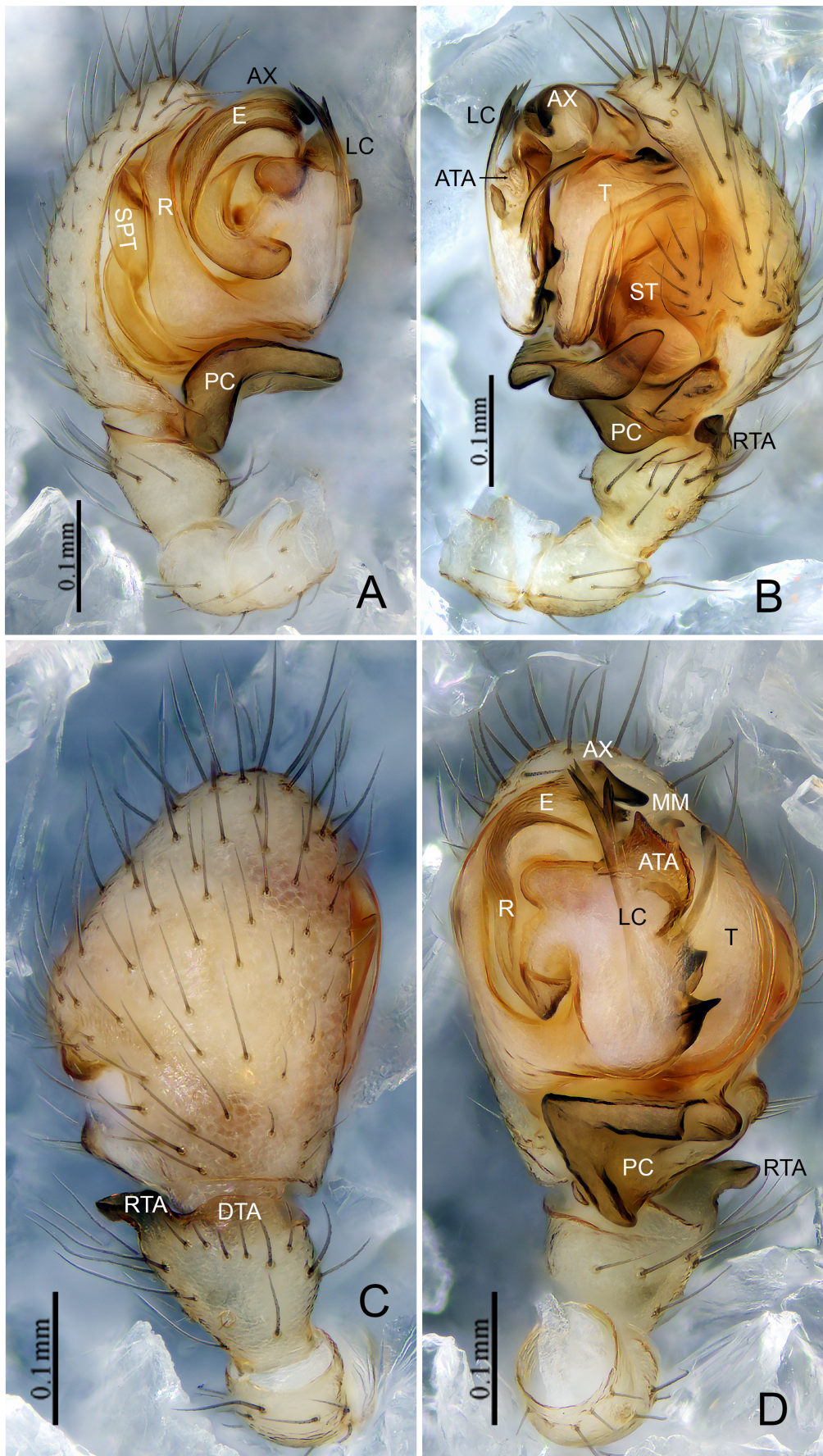


FIGURE 14. *Ryojius flosculus* sp. n., male holotype left palp. **A** prolateral view **B** retrolateral view **C** dorsal view **D** ventral view.

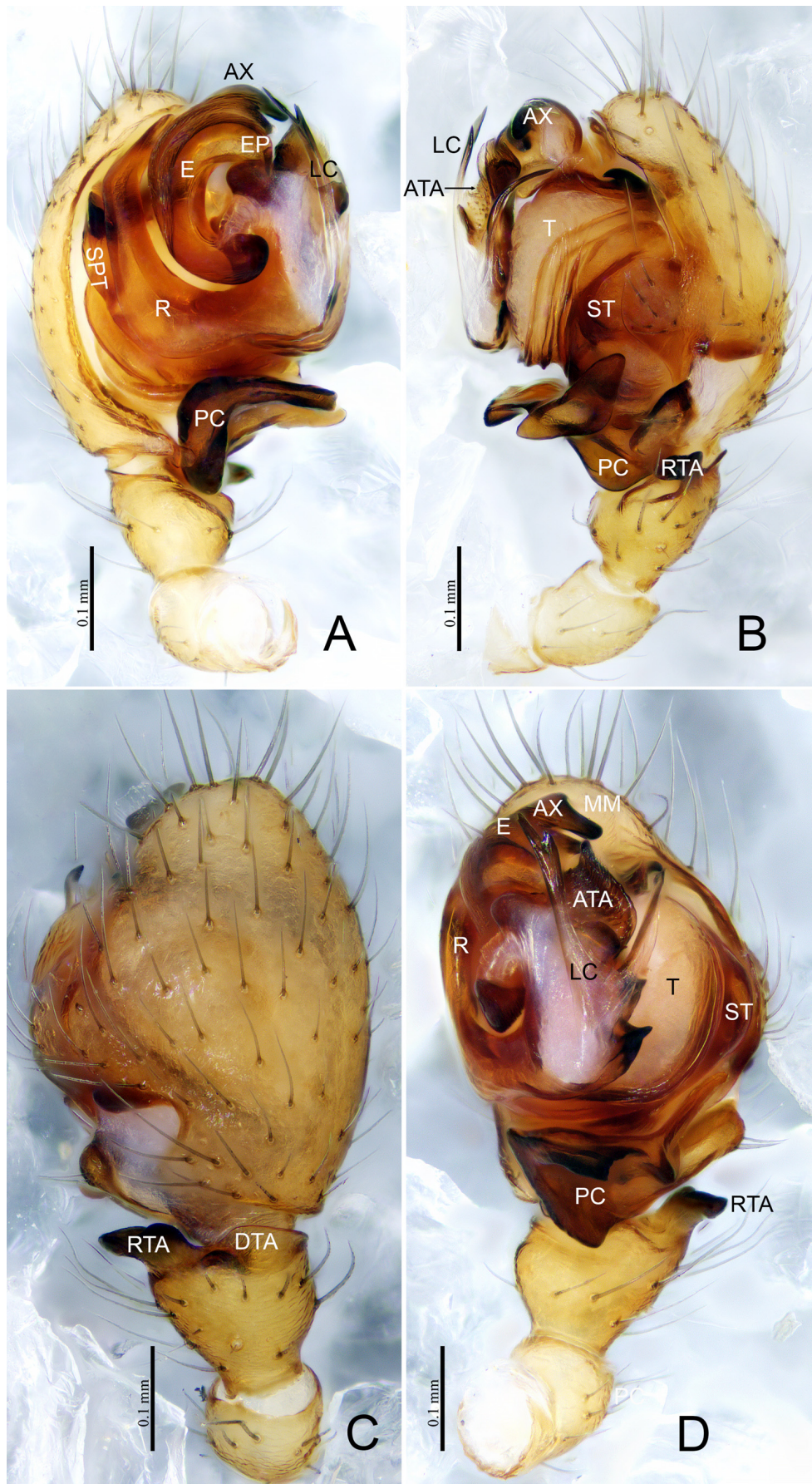


FIGURE 15. *Ryojius latus* sp. n., male holotype left palp. A prolateral view B retrolateral view C dorsal view D ventral view.

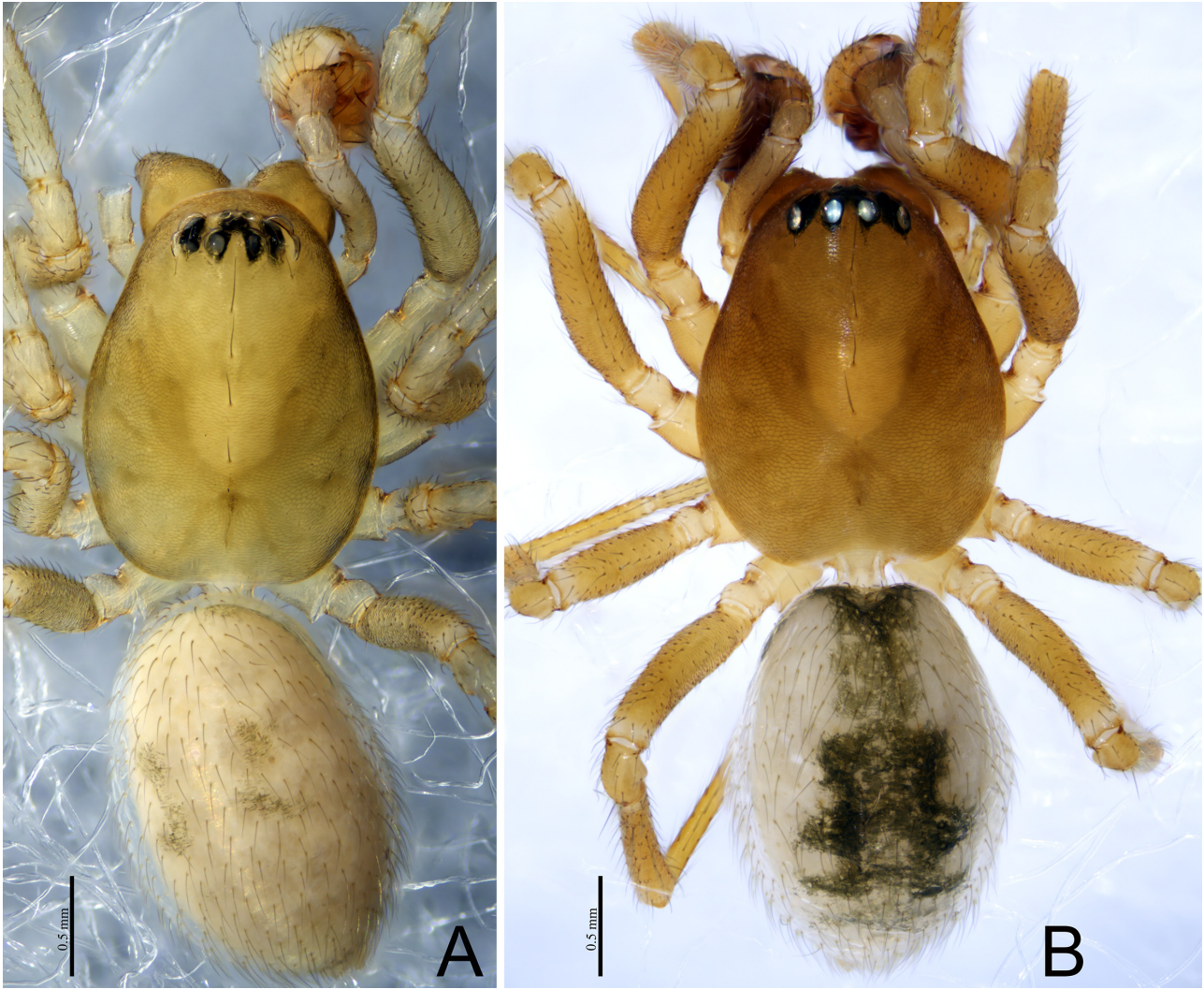


FIGURE 16. *Ryojius flosculus* sp. n., male holotype (A), *Ryojius latus* sp. n., male holotype (B). A, B habitus, dorsal view.

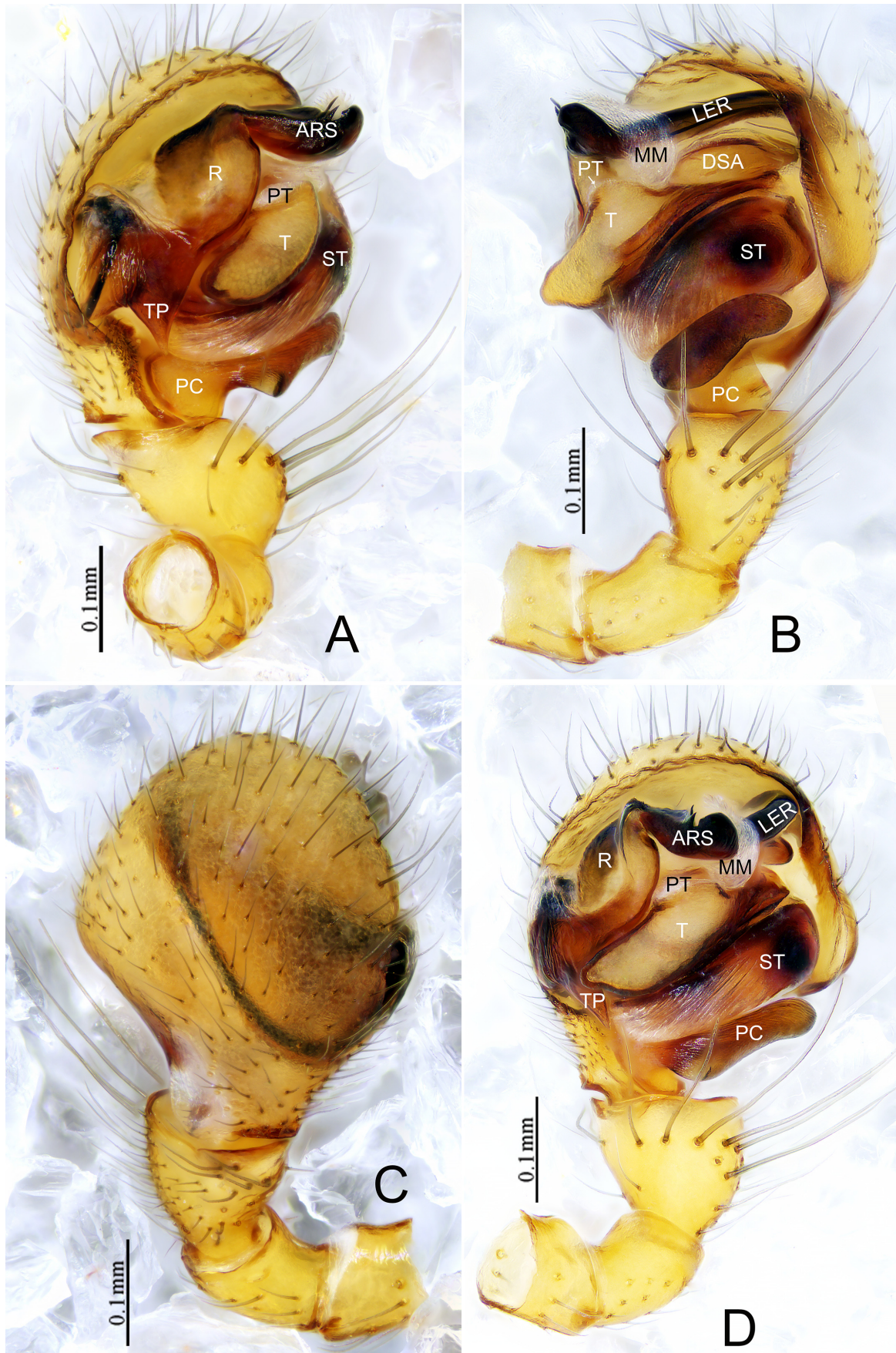


FIGURE 17. *Shaanxinus shizhuziensis* sp. n., male holotype left palp. A prolateral view B retrolateral view C dorsal view D ventral view.

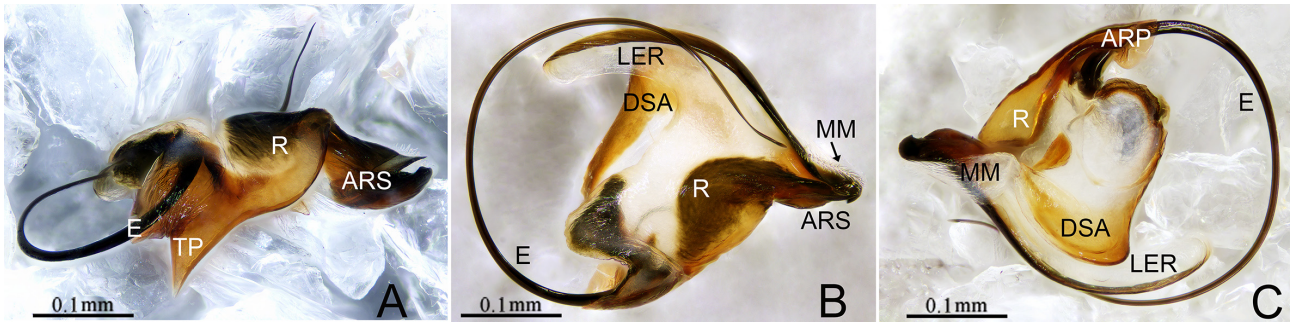


FIGURE 18. *Shaanxinus shizhuziensis* sp. n., male (one of paratype left palp). A–C Embolic division.

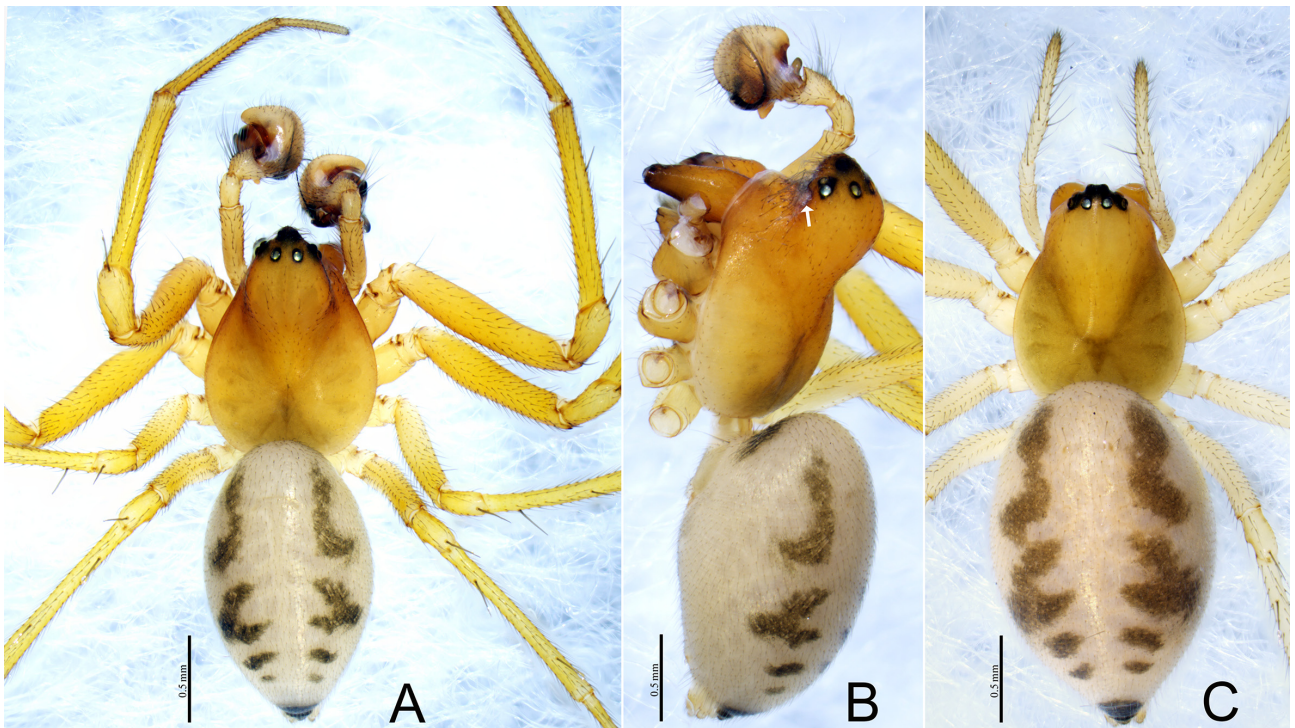


FIGURE 20. *Shaanxinus shizhuziensis* sp. n., male holotype (A, B), female (one of paratype, C). A, C habitus, dorsal view B habitus, lateral view.

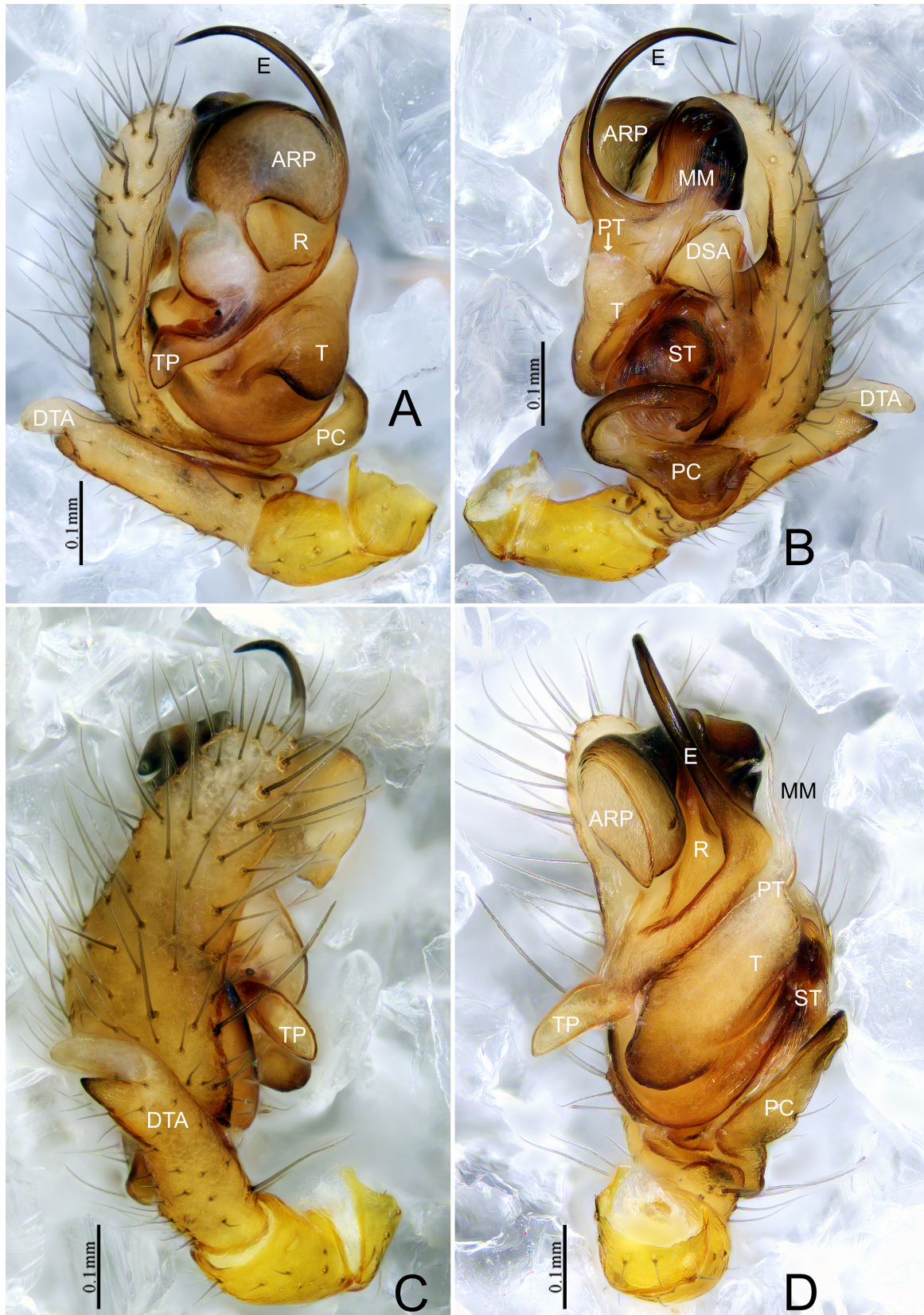


FIGURE 21. *Sinogone caesum* sp. n., male holotype left palp. **A** prolateral view **B** retrolateral view **C** dorsal view **D** ventral view.

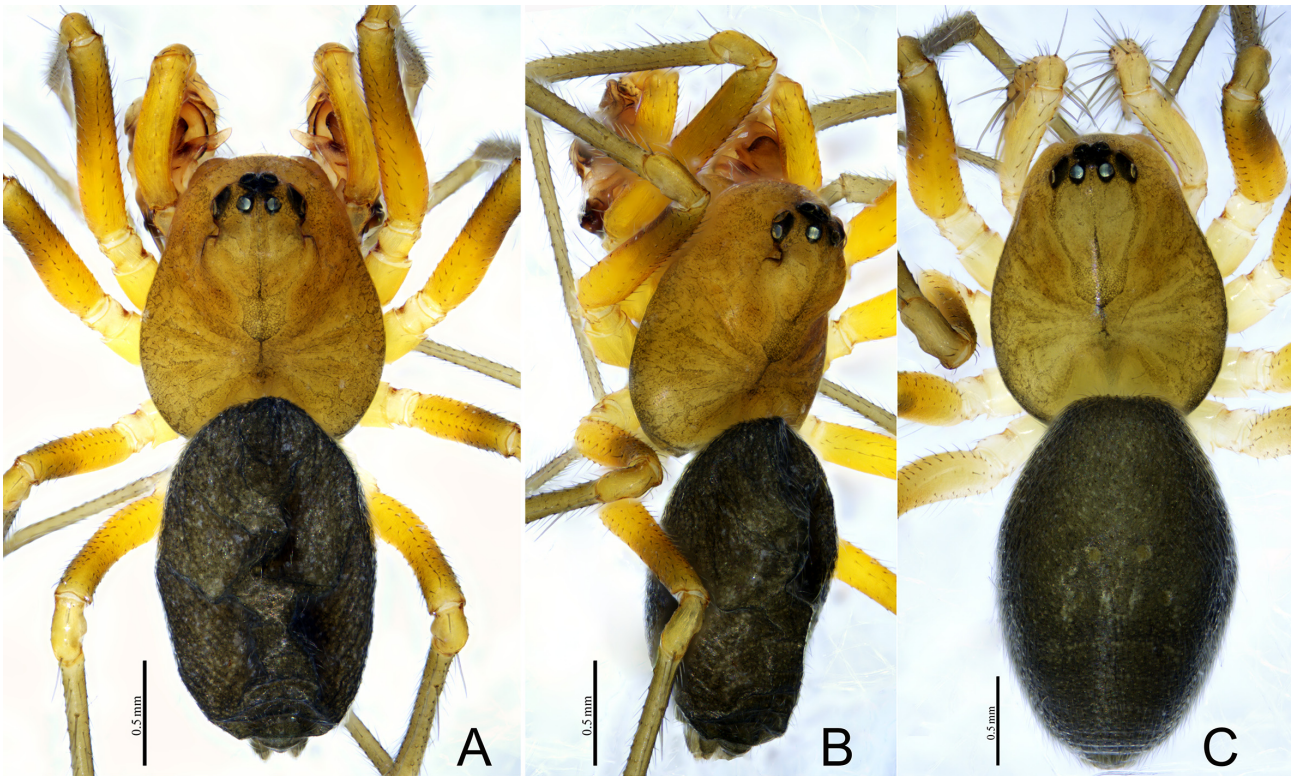


FIGURE 23. *Sinogone caesum* sp. n., male holotype (A, B), female (one of paratype, C). A, C habitus, dorsal view B habitus, lateral view.

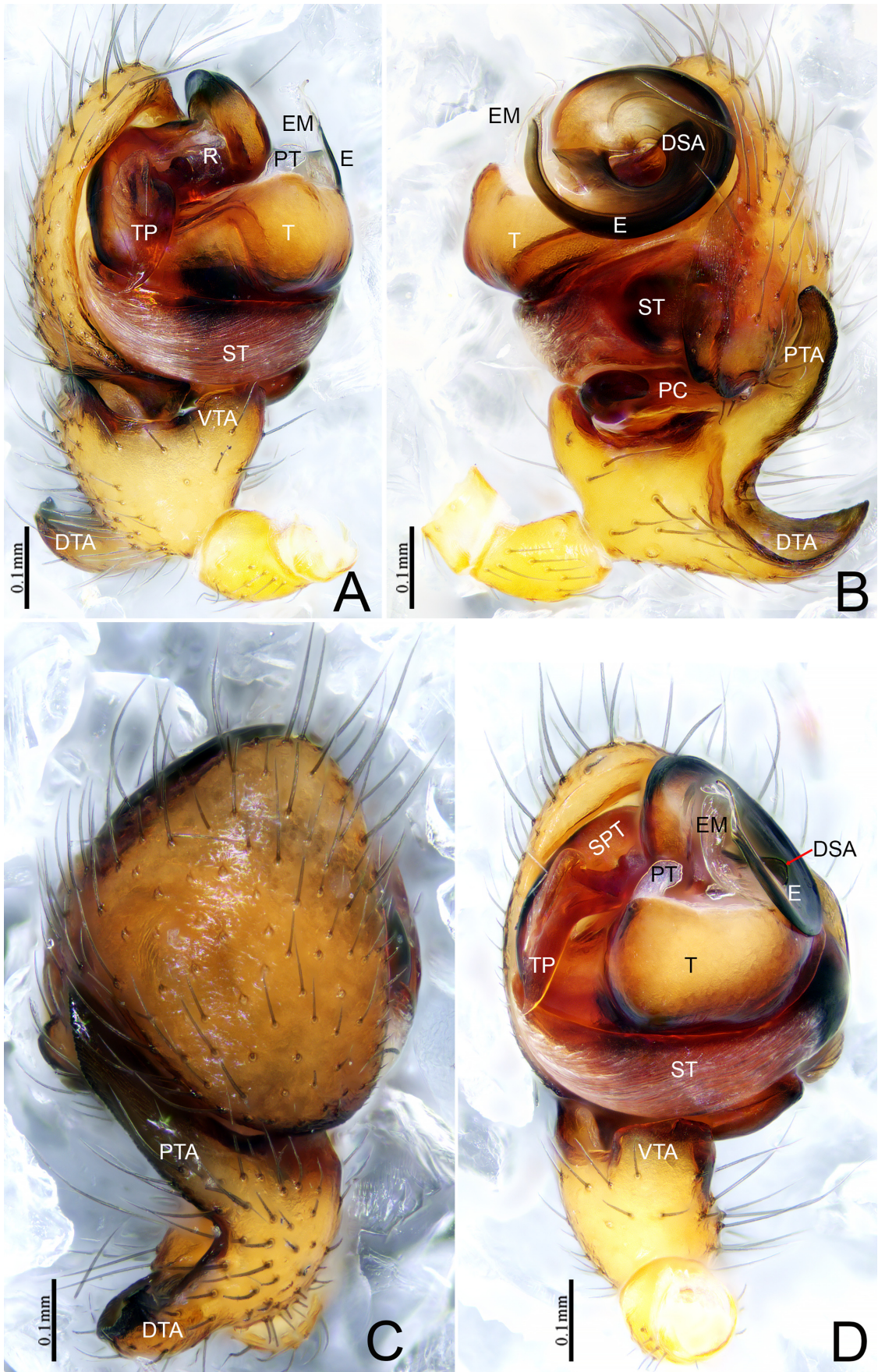


FIGURE 24. *Walckenaeria hongqiensis* sp. n., male holotype left palp. **A** prolateral view **B** retrolateral view **C** dorsal view **D** ventral view.

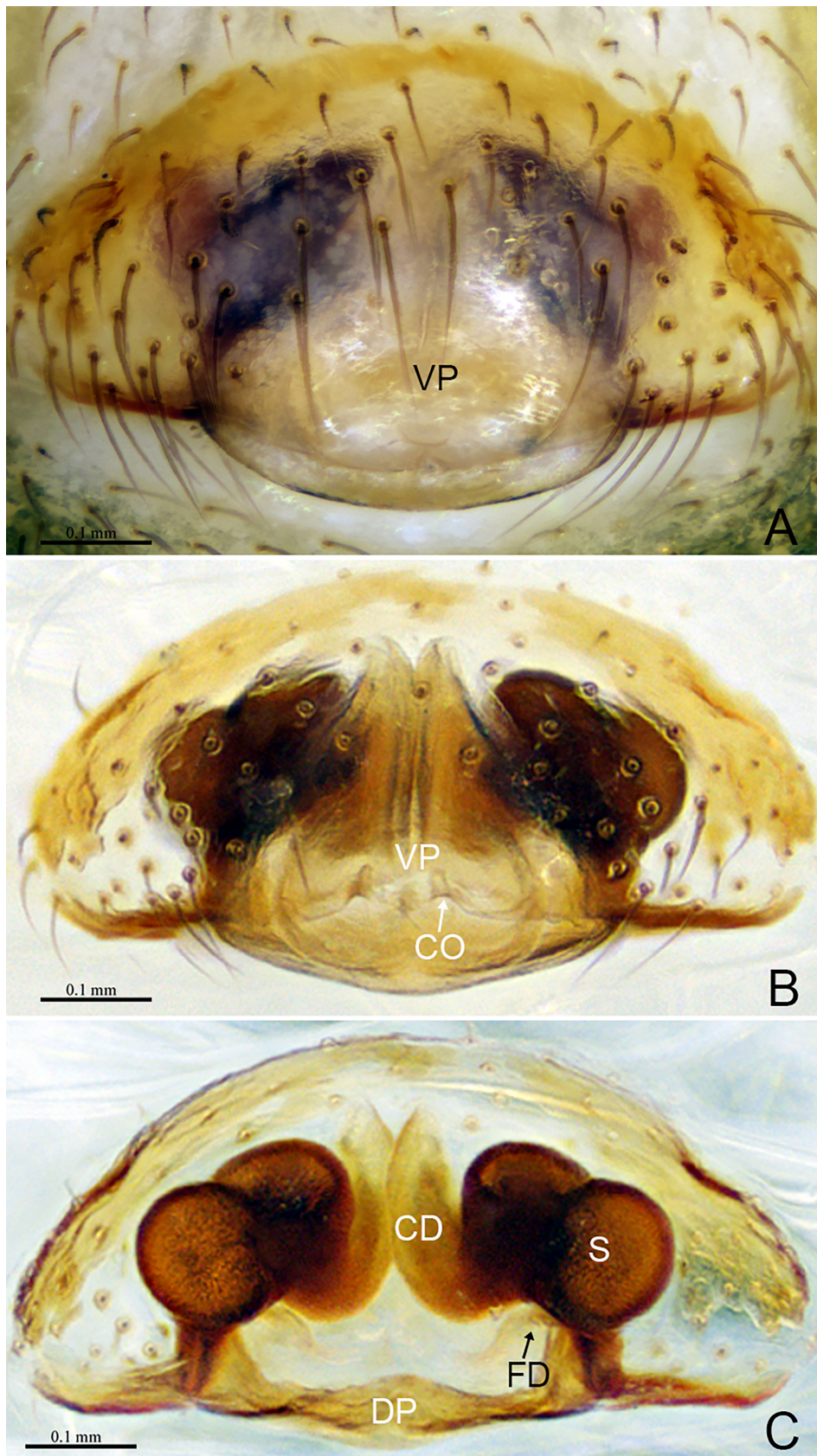


FIGURE 25. *Walckenaeria hongqiensis* sp. n., female (one of paratypes). A, B Epigyne, ventral view, C Vulva, dorsal view.



FIGURE 26. *Walckenaeria hongqiensis* sp. n., male holotype (A, B), female (one of paratype, C). A, C habitus, dorsal view B habitus, lateral view.

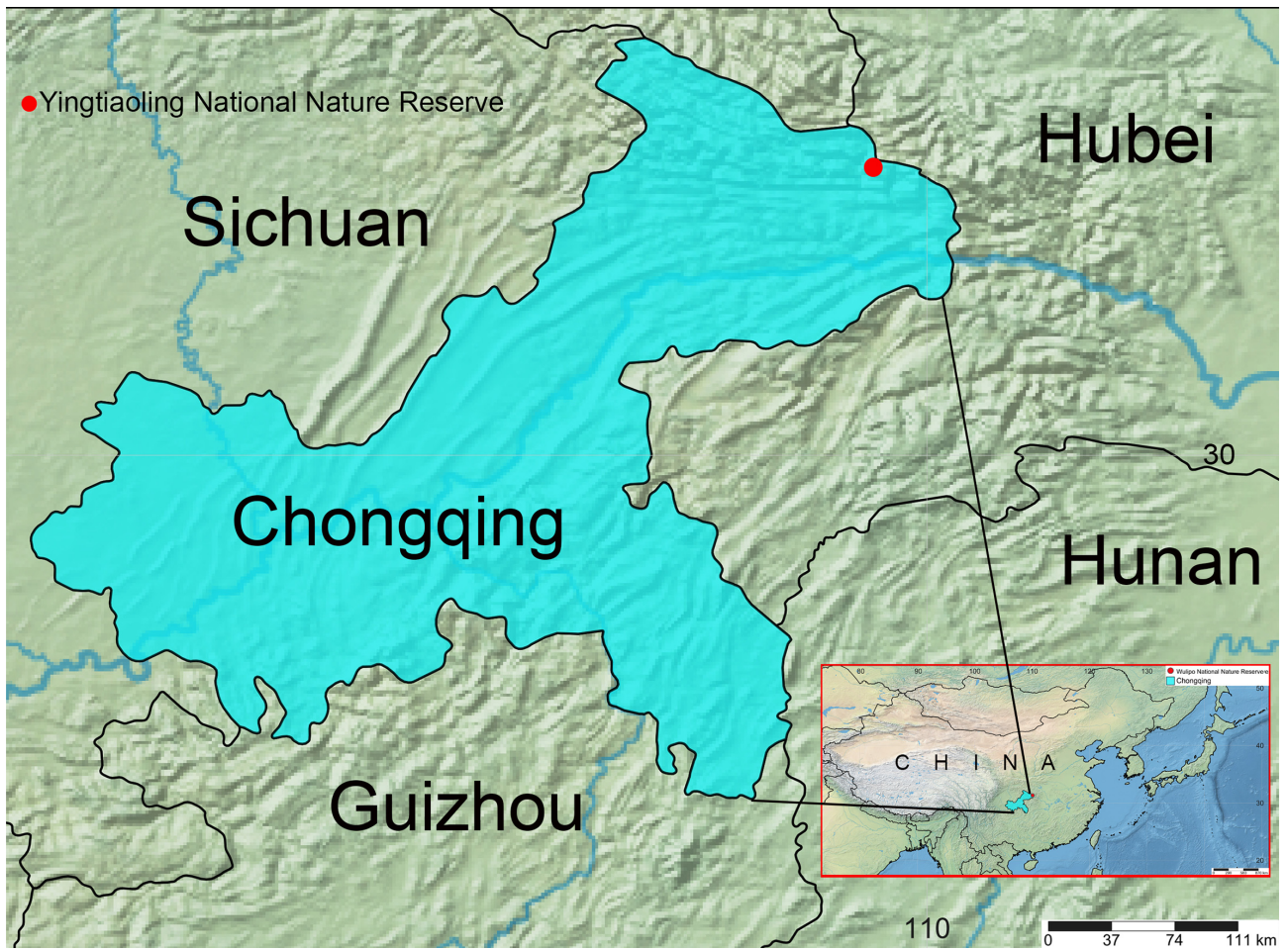


FIGURE 27. Location of Yingtiaoling National Nature Reserve.