



DARIO R. FAUSTINO-FUSTER, JEISSON A. LÓPEZ-CASTAÑO, JHONATAN M. QUIÑONES & VANESSA MEZA-VARGAS (2024) Increasing the species diversity of the monotypic genus *Pariolius* Cope 1872 (Siluriformes: Heptapteridae) after more than 150 years. *Zootaxa*, 5433 (3): 389–403.

The original publication lacked corrections, figures and captions. The specified updated information are as follows:

On page 389 of the article in the author's affiliation

DARIO R. FAUSTINO-FUSTER^{1,2,5,*}, JEISSON A. LÓPEZ-CASTAÑO³, JHONATAN M. QUIÑONES^{3,4} & VANESSA MEZA-VARGAS^{1,5}

Should be

DARIO R. FAUSTINO-FUSTER^{1,2,3,*}, JEISSON A. LÓPEZ-CASTAÑO⁴, JHONATAN M. QUIÑONES^{4,5} & VANESSA MEZA-VARGAS^{1,3}

On page 401 of the article in the Acknowledgements:

We thank the CONCYTEC through the PROCENCIA program within the framework of the contest “Projects for the incorporation of postdoctoral researchers in Peruvian institutions” to support VMV [074-2021] and DRFF [PE501085130-2023].

Should be

We thank the CONCYTEC through the PROCENCIA program within the framework of the contest “Projects for the incorporation of postdoctoral researchers in Peruvian institutions” to support DRFF [PE501085130-2023] and within the framework of the call “Interinstitutional Alliances for Doctorate Programs” to VMV [PE501084299-2023-PROCENCIA-BM].



FIGURE 1. *Pariolius pax*, new species, MHNU-I, 3258, holotype, 38.8 mm SL, Ovejas creek tributary to Guaviare River, Meta State. (A) Lateral view. (B) Ventral view. (C) Dorsal view. Bar = 1 cm.

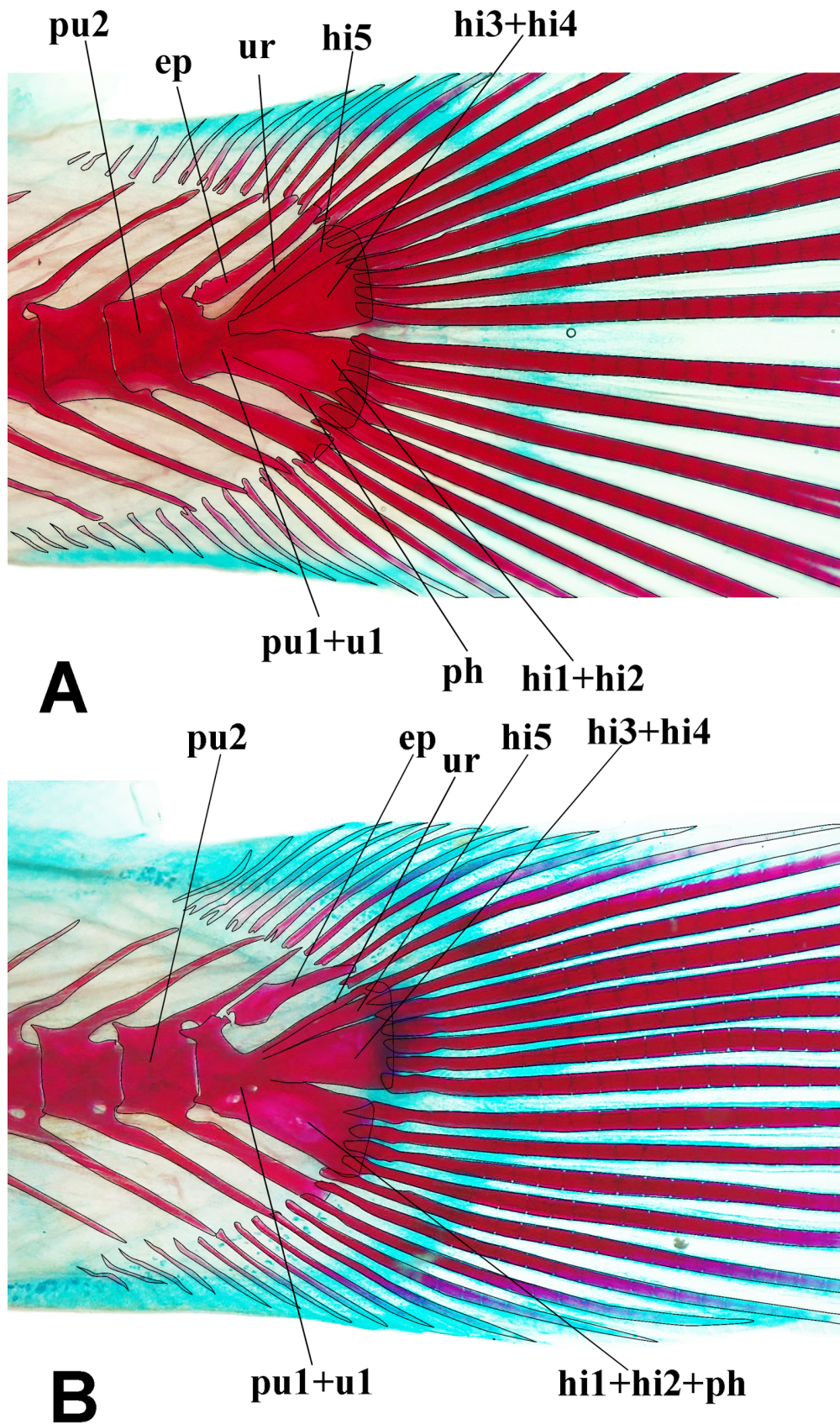


FIGURE 2. Lateral view of the caudal skeleton of (A) *Pariolius pax*, MPUJ 10047, paratype, 34.0 mm SL (B) *Pariolius maldonadoi*, MPUJ 13076, paratype, 28.4 mm SL. Abbreviations of the anatomical parts: ep = epural; hi 1 + hi 2 = complex plate formed by hypurals 1 and 2; hi3+hi4 = complex plate formed by hypurals 3, 4; hi5 = hypural 5; ph = parhypural; pu1 + u1 = complex centrum formed by preural centrum 1 and ural centrum 1; pu2 = preural centrum 2; ur = uroneural.

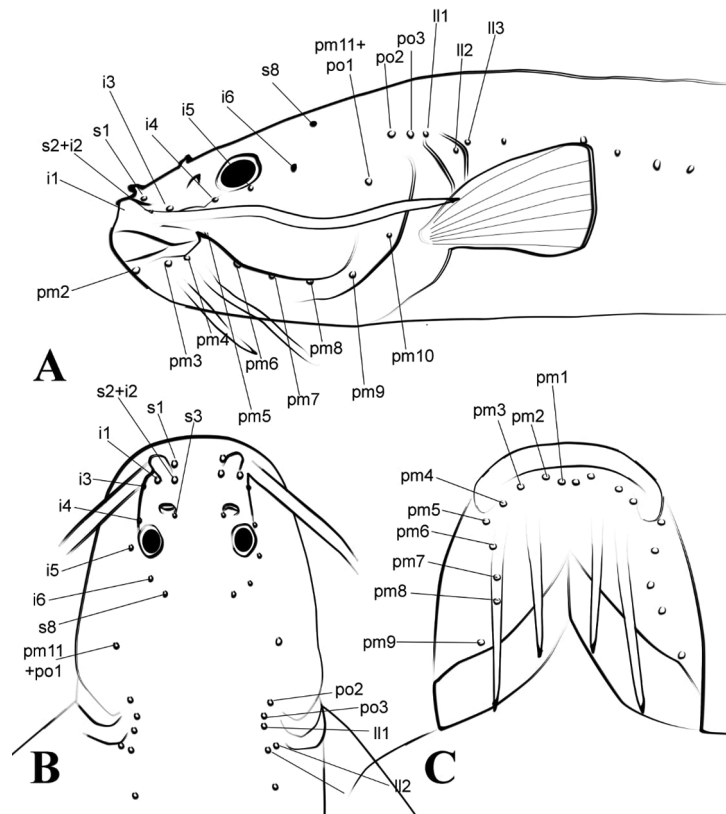


FIGURE 3. Laterosensory pores of *Pariolius pax* MPUJ 10047, paratype, 34.0 mm SL. (A) Lateral view. (B) Dorsal view. (C) Ventral view. Abbreviations of the anatomical parts: i1 = infraorbital sensory pore 1; i3–6 = infraorbital sensory pores 3–6; ll1–3 = lateral line sensory pores 1–3; pm1–10 = preoperculo-mandibular sensory pores 1–10; po1 + pm11 = postotic sensory pore 1 + preoperculo-mandibular sensory pore 11; po2 = postotic sensory pore 2; po3 = postotic sensory pore 3; s1 = supraorbital sensory pore 1; s2 + i2 = supraorbital sensory pore 2 + infraorbital sensory pore 2; s3 = supraorbital sensory pore 3; s8 = supraorbital sensory pore 8.

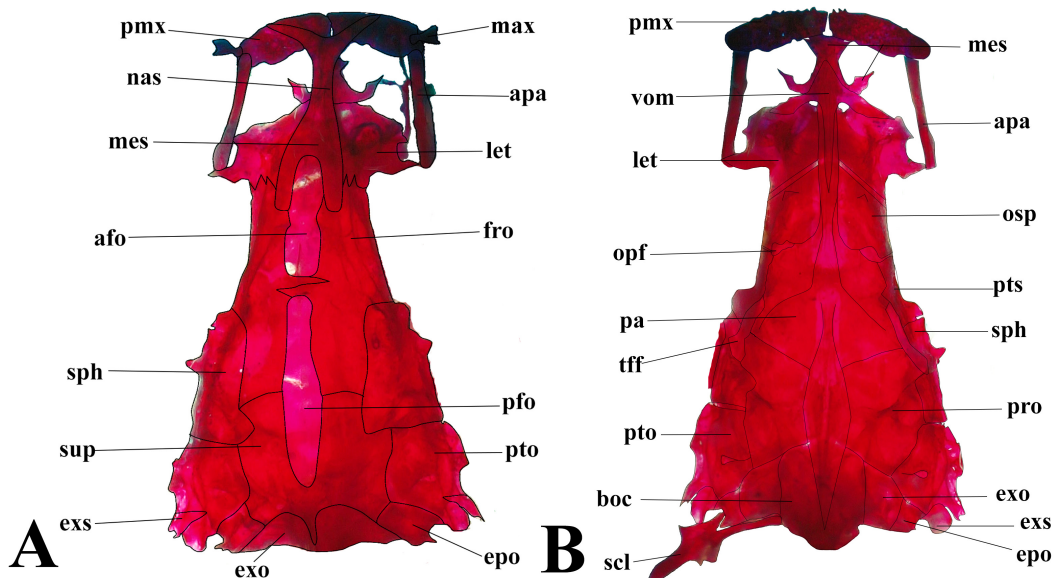


FIGURE 4. (A) Dorsal view and (B) Ventral view of cranium of *Pariolius pax*, MPUJ 10047, paratype, 34.0 mm SL. Abbreviations of the anatomical parts: afo = anterior fontanel; apa = autopalatine; boc: basioccipital; epo = epioccipital; exo = exoccipital; exs = extrascapula; fro = frontal; let = lateral ethmoid; max = maxilla; mes = mesethmoid; nas = nasal; opf: optic foramen; osp: orbitosphenoid; par: parasphenoid; pfo = posterior fontanel; pmx = premaxilla; pro: prootic; pto = pterotic; pts: pterosphenoïd; soc = supraoccipital; and sph = sphenotic; tff: trigeminofacial foramen; vom = vomer.

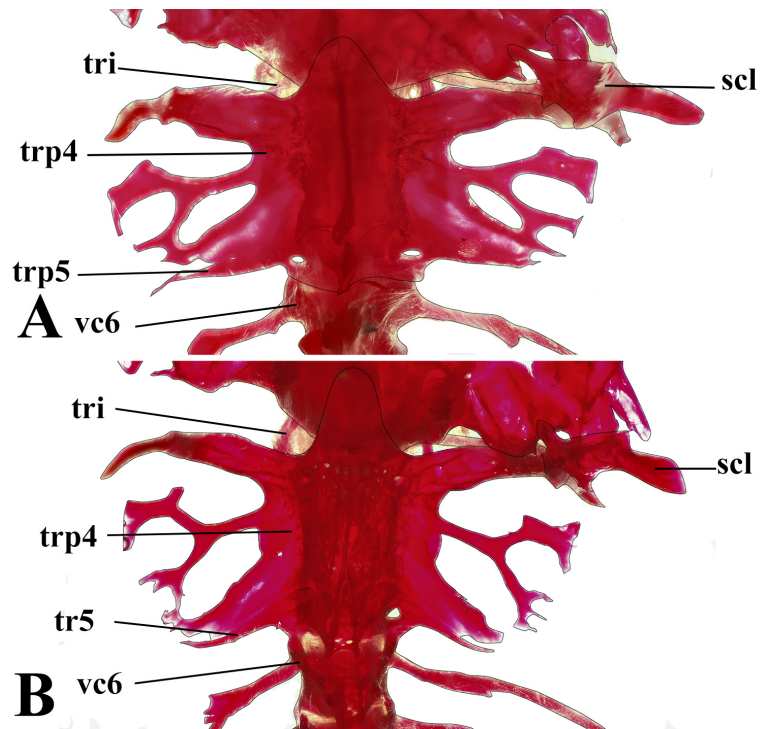


FIGURE 5. Dorsal view of the complex anterior vertebra of (A) *Pariolius pax*, MPUJ 10047, paratype, 34.0 mm SL and (B) *Pariolius maldonadoi*, MPUJ 13077, paratype, 27.3 mm SL. Abbreviations of the anatomical parts: scl = supracleithrum; tri = *tripus*; trp4 = transverse process 4; trp5: transverse process 5 and vc6: sixth vertebral centrum.

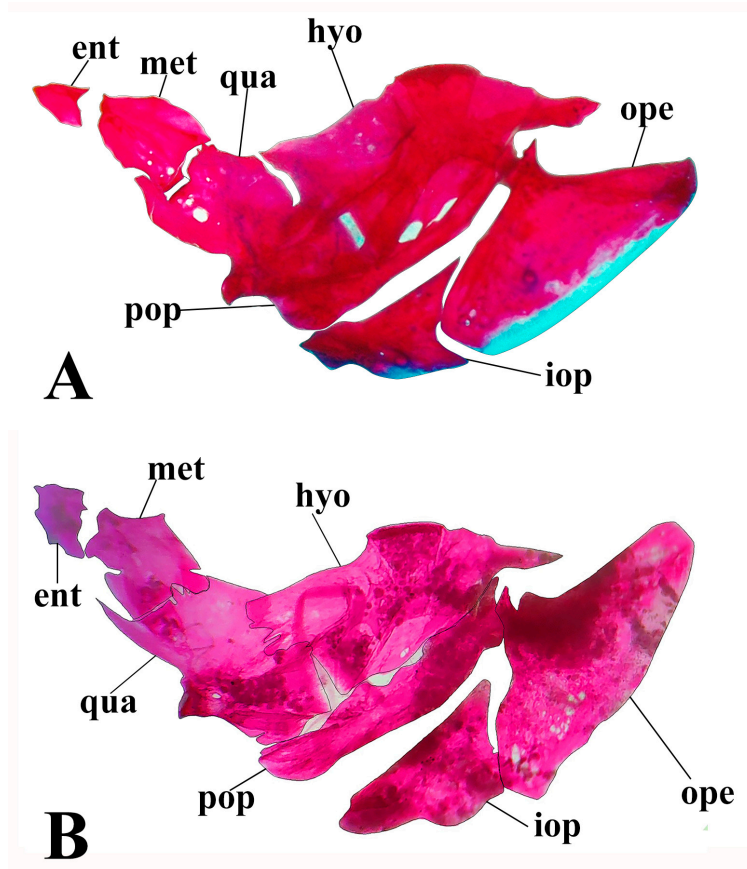


FIGURE 6. Lateral view of suspensorium (A) *Pariolius pax*, MPUJ 10047, paratype, 34.0 mm SL. (B) *Pariolius maldonadoi*, MPUJ 13076, paratype, 28.4 mm SL. Abbreviations of the anatomical parts: hyo = hyomandibula; ent = entopterygoid; iop = interopercle; met = metapterygoid; ope = opercle; pop = preopercle; qua = quadrate and spo = subpreopercle.

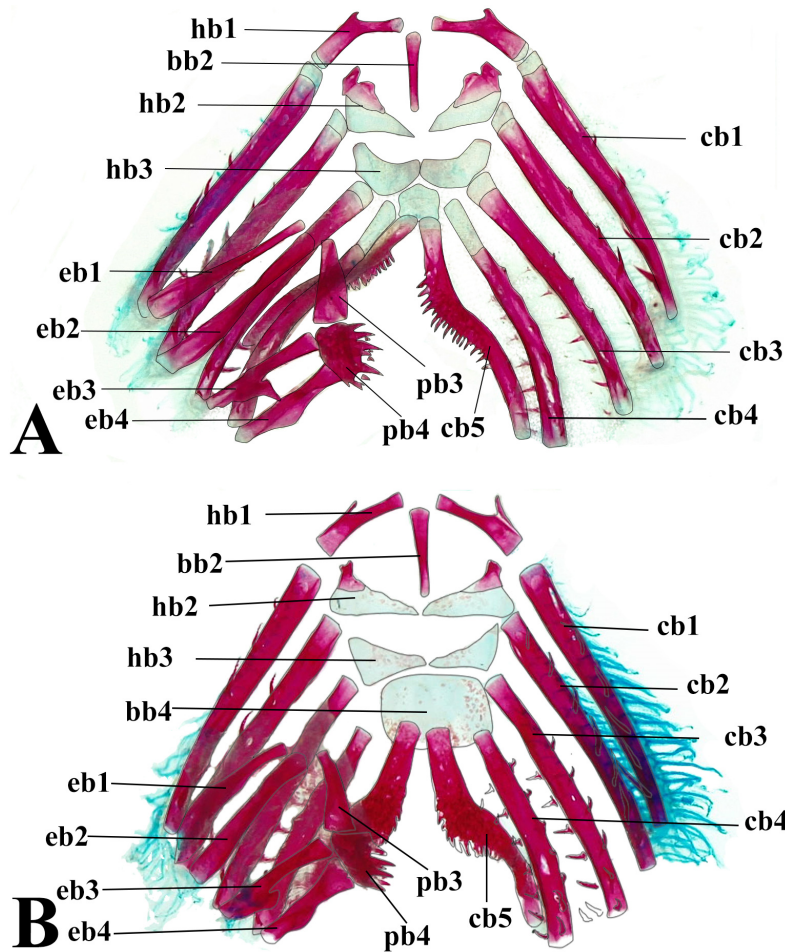


FIGURE 7. Dorsal view of the branchial arch of (A) *Pariolius pax*, MPUJ 10047, paratype, 36.7 mm SL. (B) *Pariolius maldonadoi*, MPUJ 13076, paratype, 28.4 mm SL. Abbreviations of the anatomical parts: bb₂₋₄ = basibranchial 2 a 4; cb₁₋₅ = ceratobranchial 1 to 5; eb₁₋₄ = epibranchial 1 to 4; pb₃₋₄ = pharyngo-branchial 3 to 4; hb₁₋₃ = hypobranchial 1 to 3.



FIGURE 8. Live specimen of (A) *Pariolius pax* collected in Mapiripán Municipality, vereda San Jorge, Caño Ovejas tributary of the Guaviare River, Orinoco River basin, Meta, Colombia (not preserved) and (B) *P. maldonadoi* collected in Retorno Municipality, Caño Potosí tributary of the Inírida River, Orinoco River basin, Guaviare, Colombia.

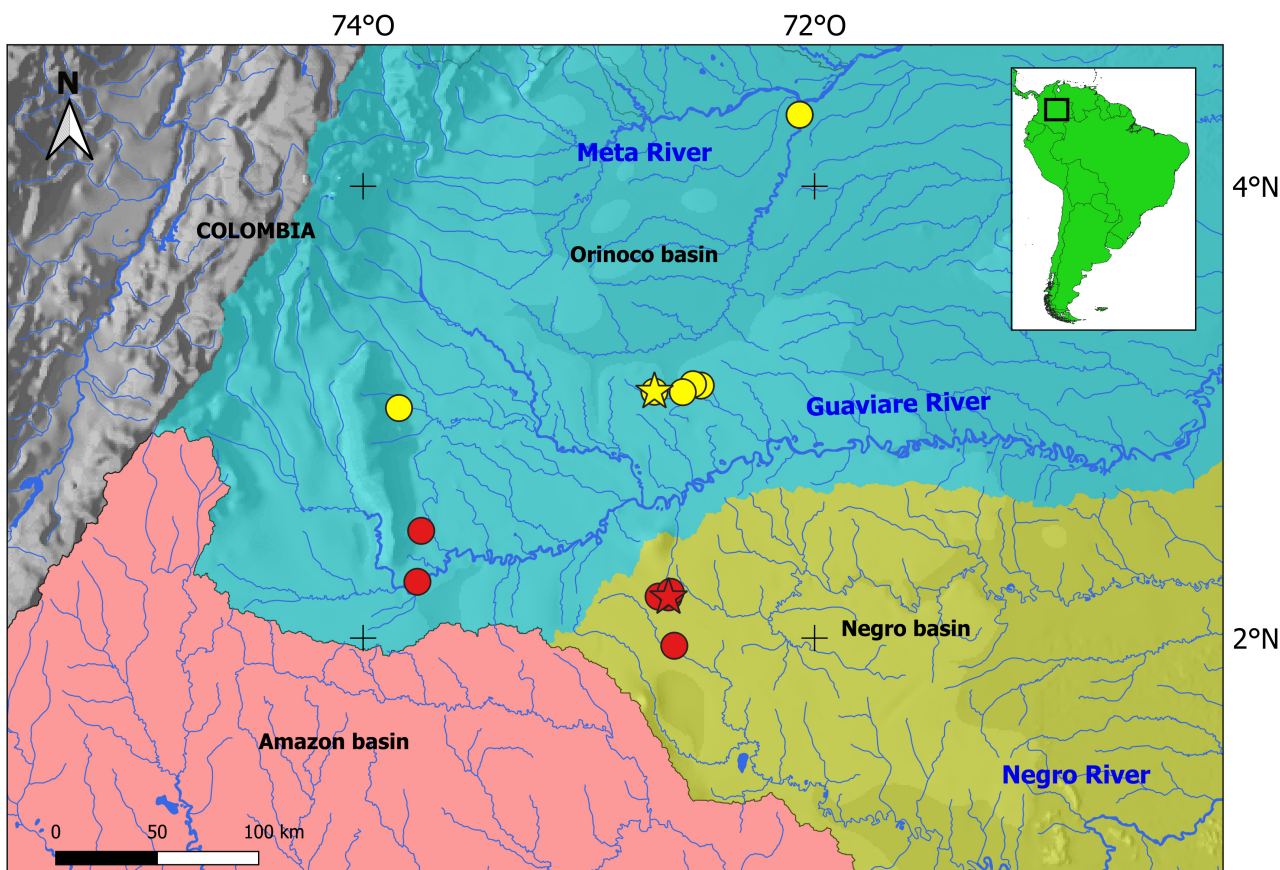


FIGURE 9. Geographical distribution of *Pariolius pax* (yellow) and *Pariolius maldonadoi* (red) from Colombia. Star represents the type localities. Each symbol may represent more than one specimen.



FIGURE 10. *Pariolius maldonadoi*, MHNU-I 3257, holotype, 32.6 mm SL, Potosí creek tributary to Inírida River, Guaviare State. (A) Lateral view. (B) Ventral view. (C) Dorsal view. Bar = 1 cm.

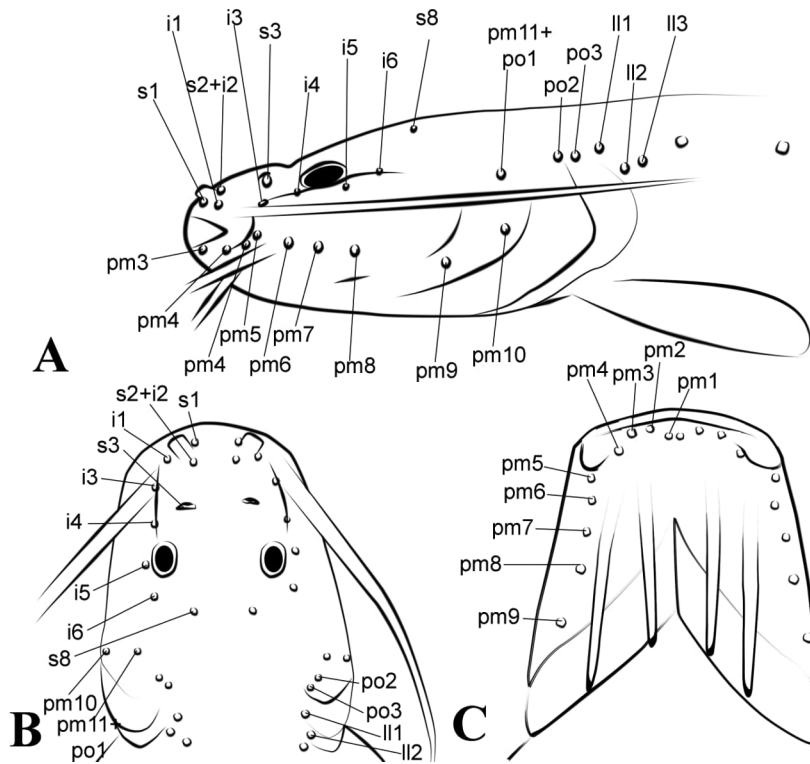


FIGURE 11. Laterosensory pores of *Pariolius maldonadoi*, MPUJ 13077, paratype, 27.3 mm SL. (A) Lateral view. (B) Dorsal view. (C) Ventral view. Abbreviations of the anatomical parts: i1 = infraorbital sensory pore 1; i3–6 = infraorbital sensory pores 3–6; ll1–3 = lateral line sensory pores 1–3; pm1–10 = preoperculomandibular sensory pores 1–10; po1 + pm11 = postotic sensory pore 1 + preoperculomandibular sensory pore 11; po2 = postotic sensory pore 2; po3 = postotic sensory pore 3; s1 = supraorbital sensory pore 1; s2 + i2 = supraorbital sensory pore 2 + infraorbital sensory pore 2; s3 = supraorbital sensory pore 3; s8 = supraorbital sensory pore 8.

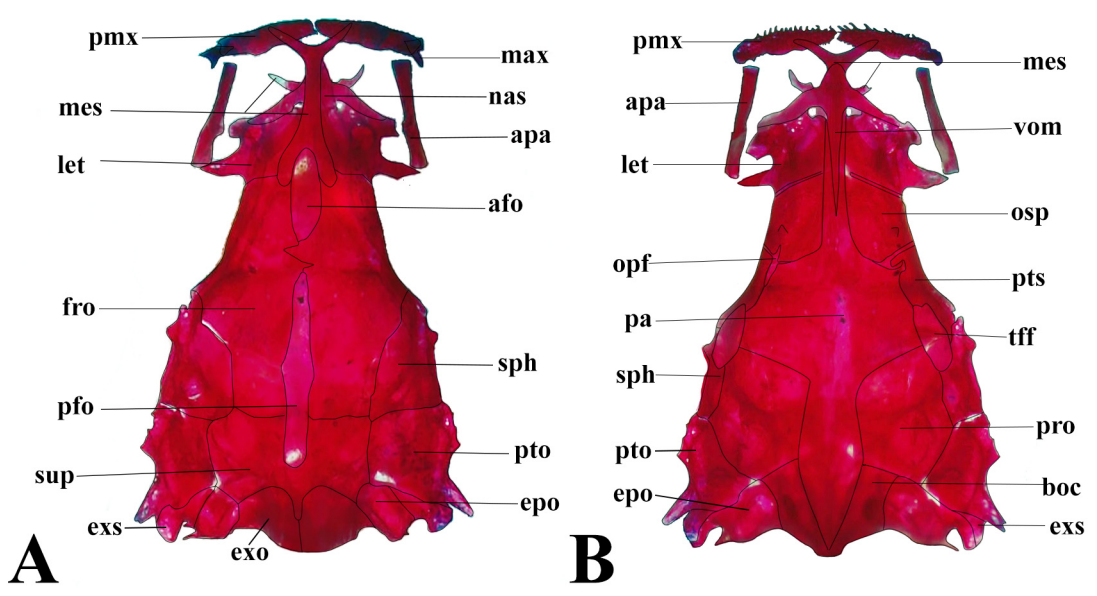


FIGURE 12. (A) Dorsal view and (B) Ventral view of cranium of *Pariolius maldonadoi*, MPUJ 13076, paratype, 28.4 mm SL. Abbreviations of the anatomical parts: afo = anterior fontanel; apa = autopalatine; boc: basioccipital; epo = epioccipital; exo = exoccipital; exs = extrascapula; fro = frontal; let = lateral ethmoid; max = maxilla; mes = mesethmoid; nas = nasal; opf: optic foramen; osp: orbitosphenoid; par: parasphenoid; pfo = posterior fontanel; pmx = premaxilla; pro: prootic; pto = pterotic; pts: ptersphenoid; soc = supraoccipital; and sph = sphenotic; tff: trigeminofacial foramen; vom = vomer.

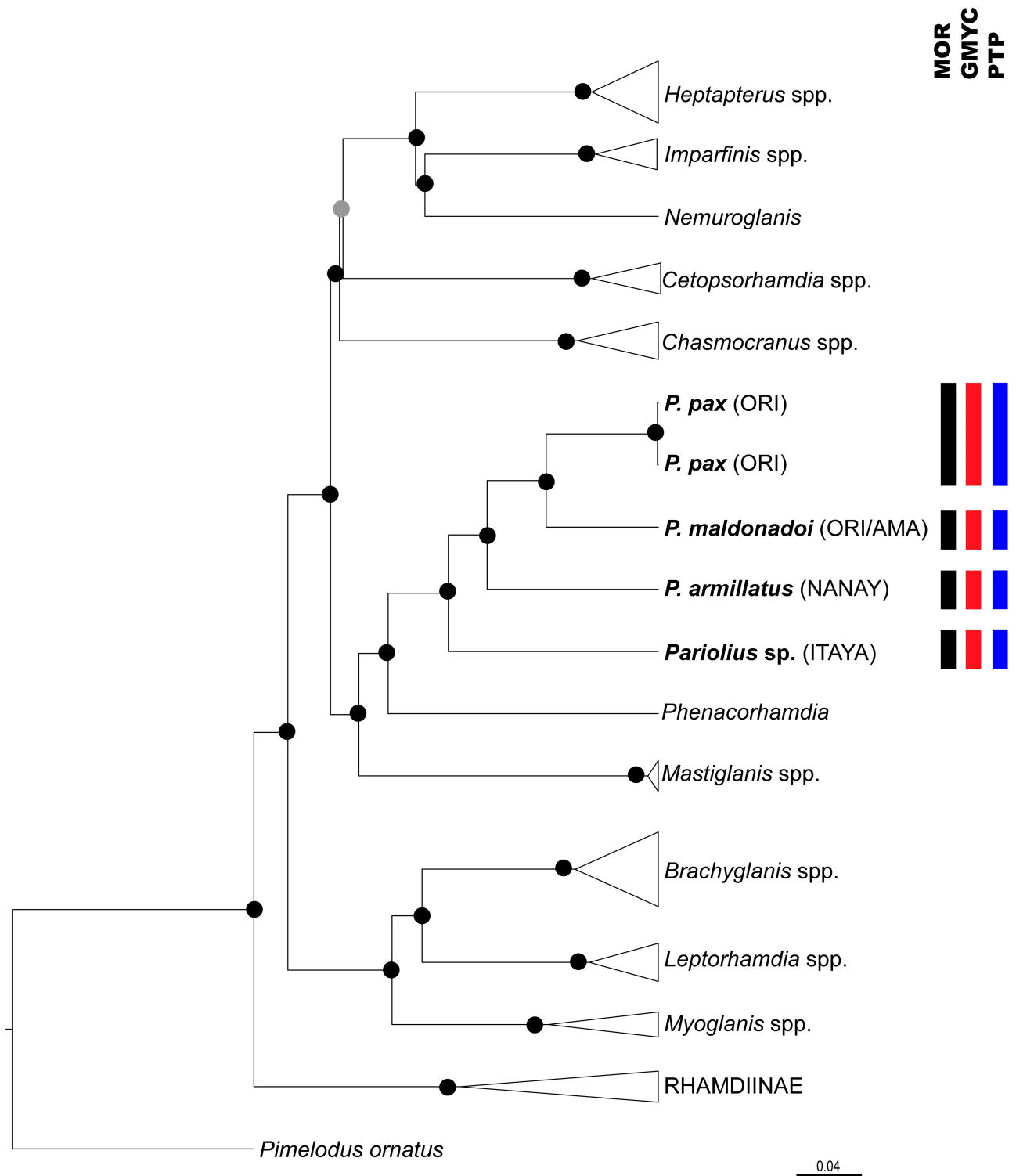


FIGURE 13. The most compressive Bayesian phylogenetic relationship of Heptapteridae based on *col*. The circles nodes represent the Bayesian support (black circle = 1 and grey circle = 0.9). Species delimitations of *Pariolius* are represented by bar (black bar = morphological delimitation (MOR), red bar = general mixed yule coalescent (GMYC) and blue bar = poisson tree processes (PTP). ORI (Orinoco River) and AMA (Amazonas River).