

FIGURE 4. Antennal plumes of male *Atrichopogon*, anterior view.

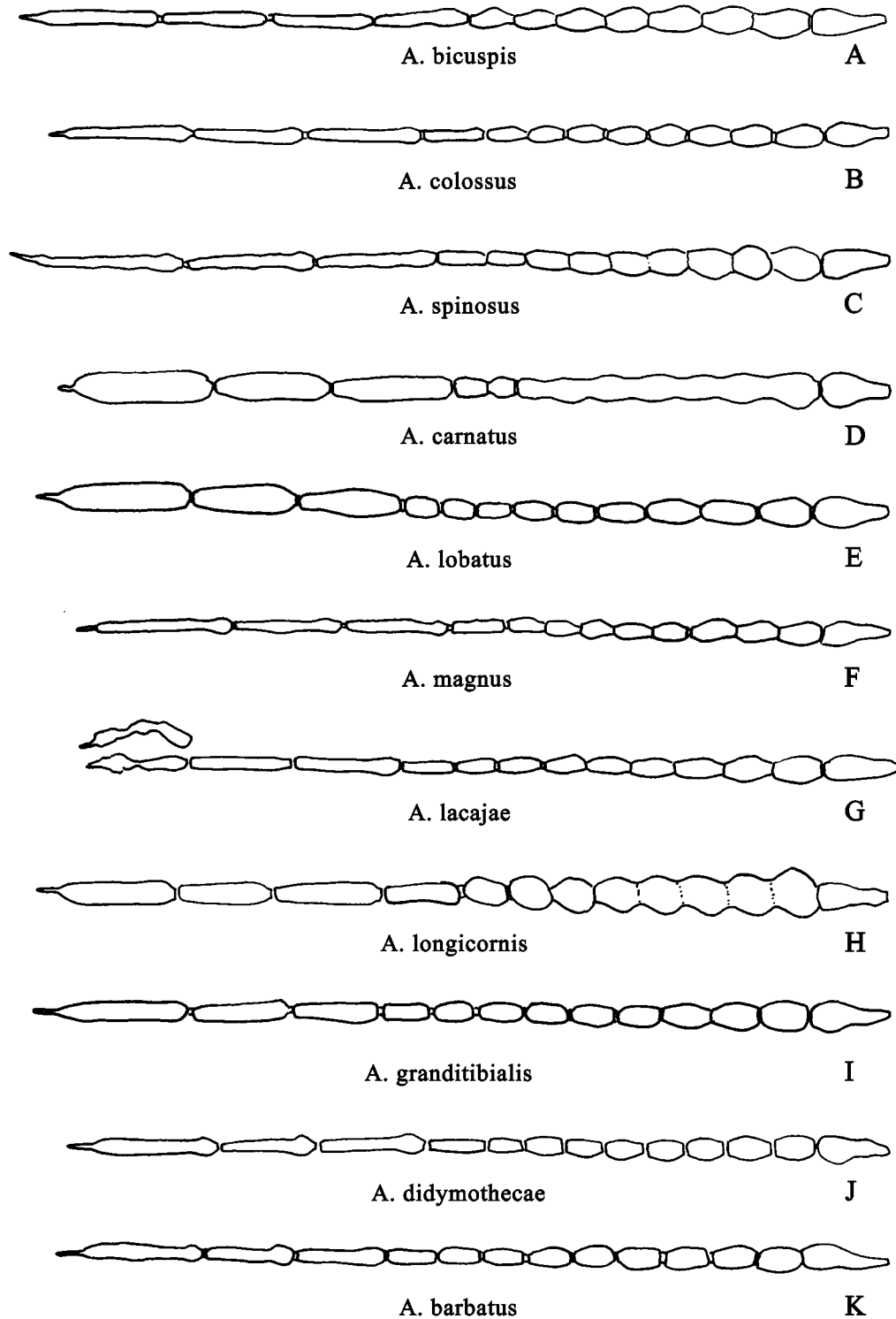


FIGURE 5. Antennae of male *Atrichopogon*. G showing both flagellomeres 13, each of which was distorted in preparation.

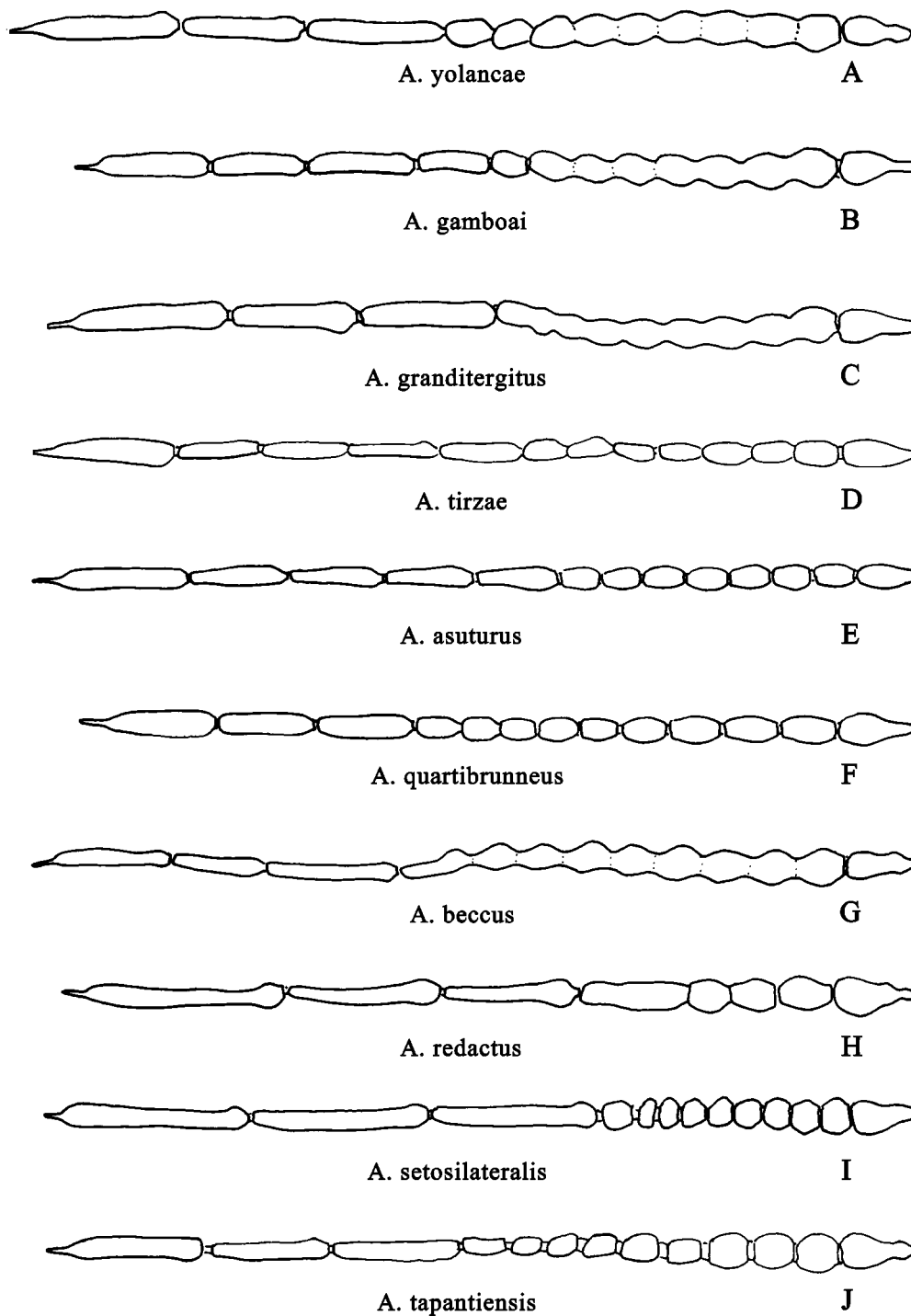


FIGURE 6. Antennae of male *Atrichopogon*.

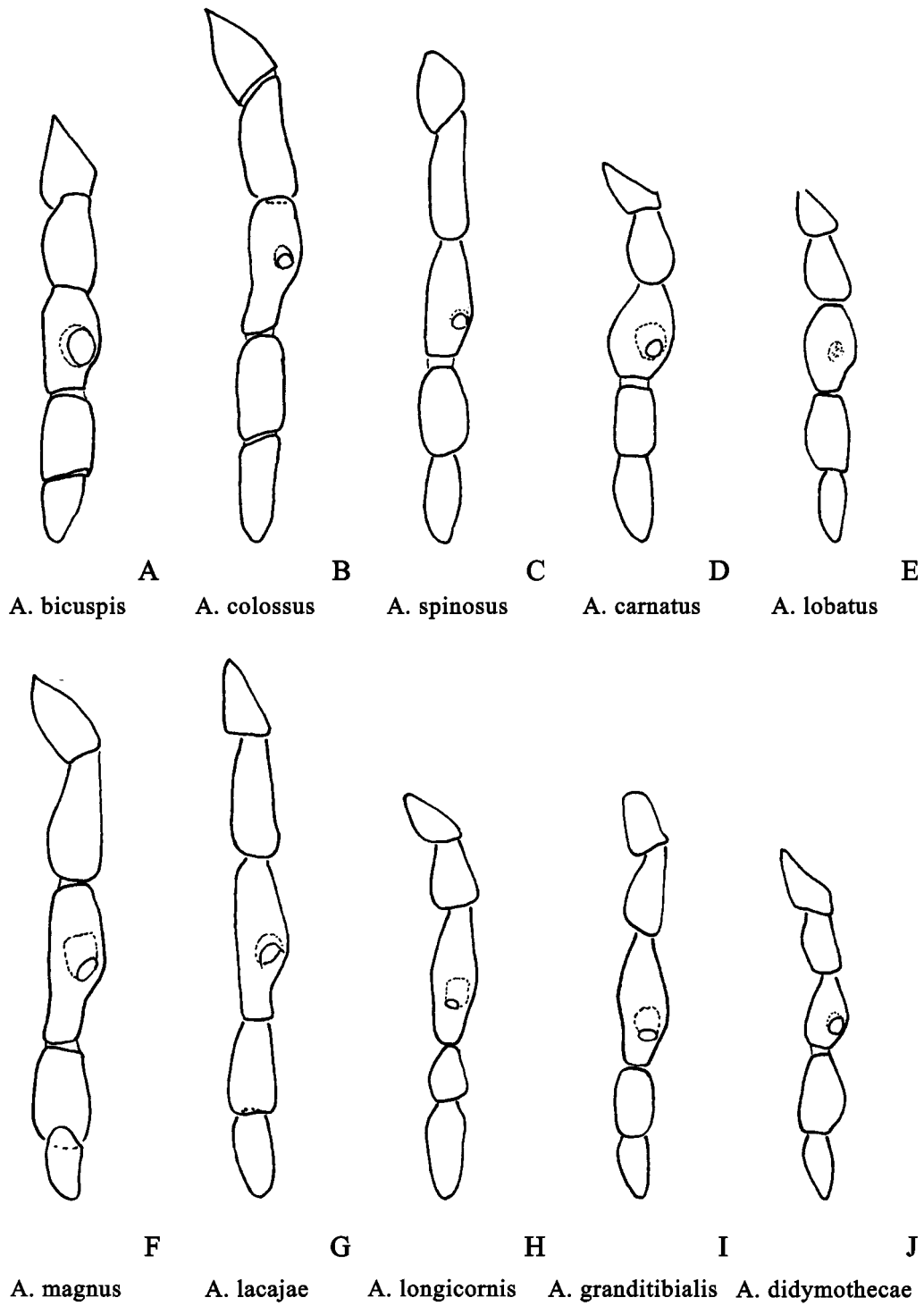


FIGURE 7. Right palpi of male *Atrichopogon*

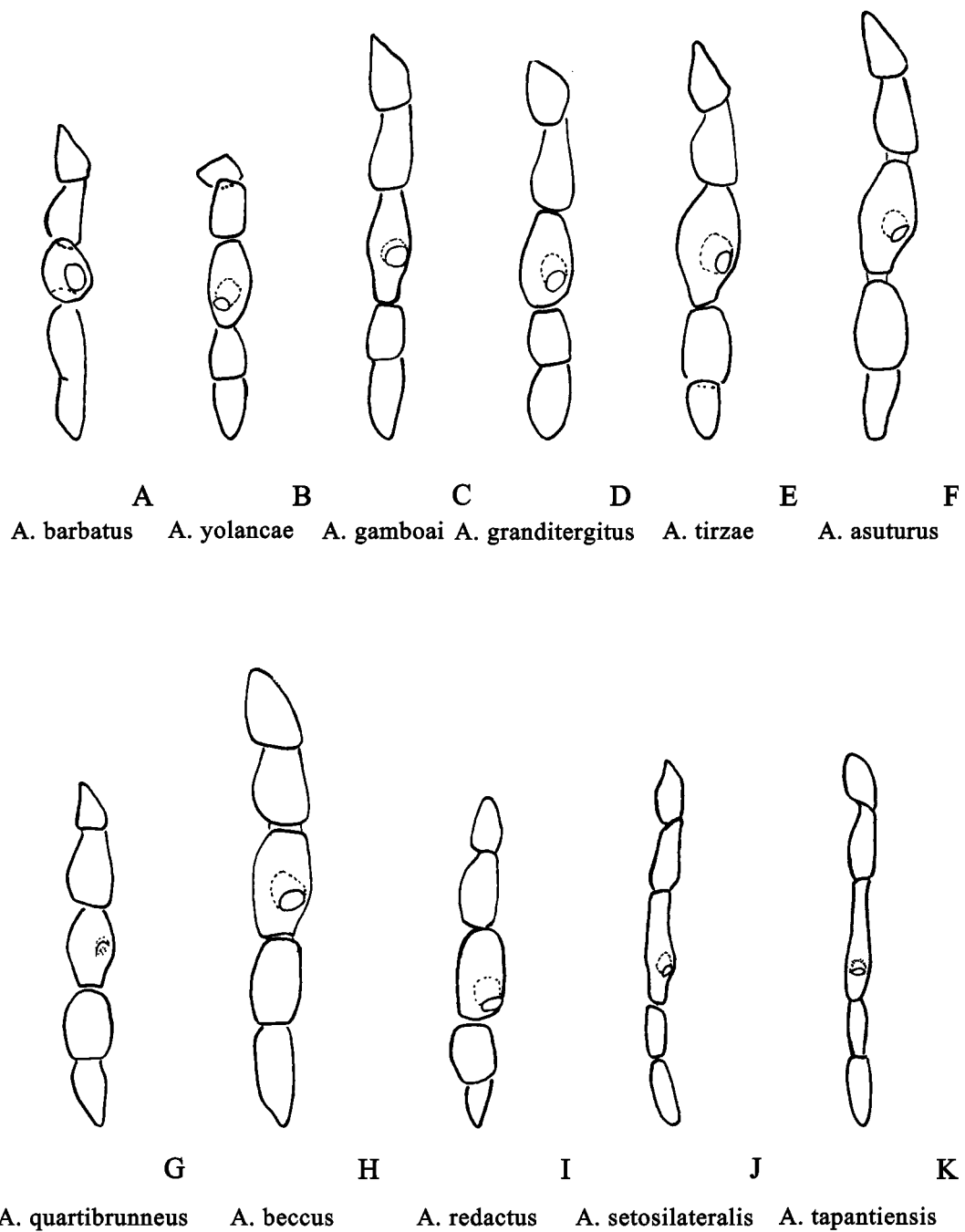


FIGURE 8. Right palpi of male *Atrichopogon*.

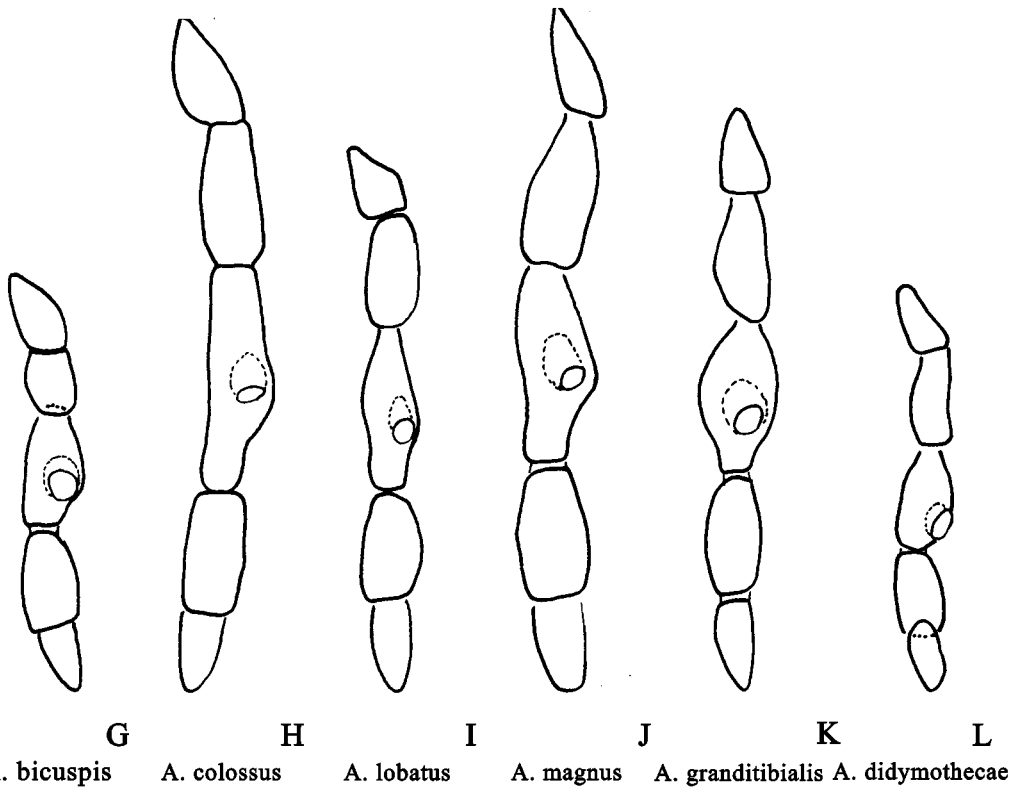
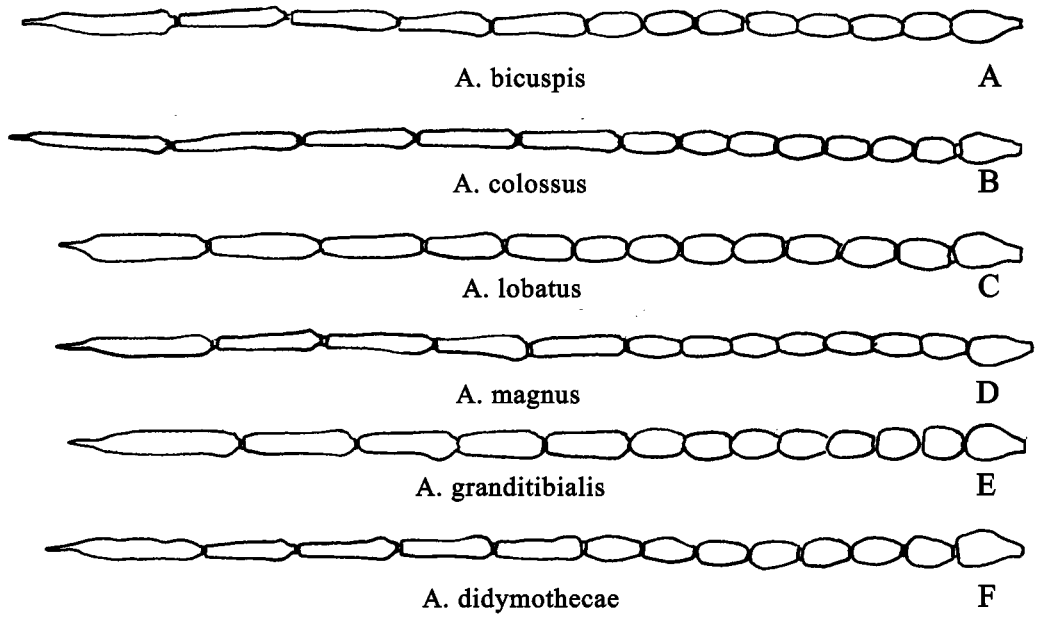


FIGURE 9. Antennae and right palpi of female *Atrichopogon*.

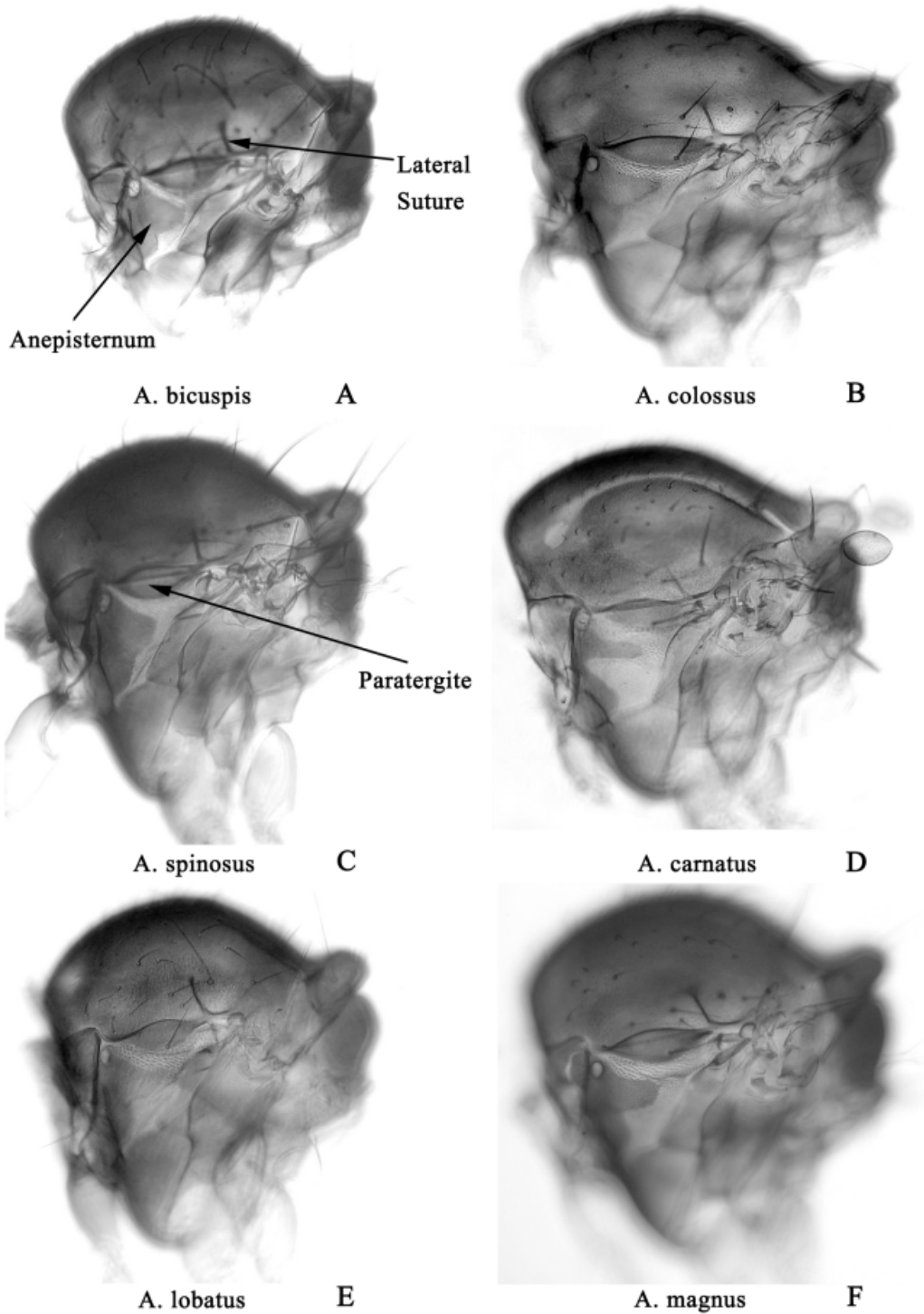


FIGURE 10. Thoraces of male *Atrichopogon*, lateral view.

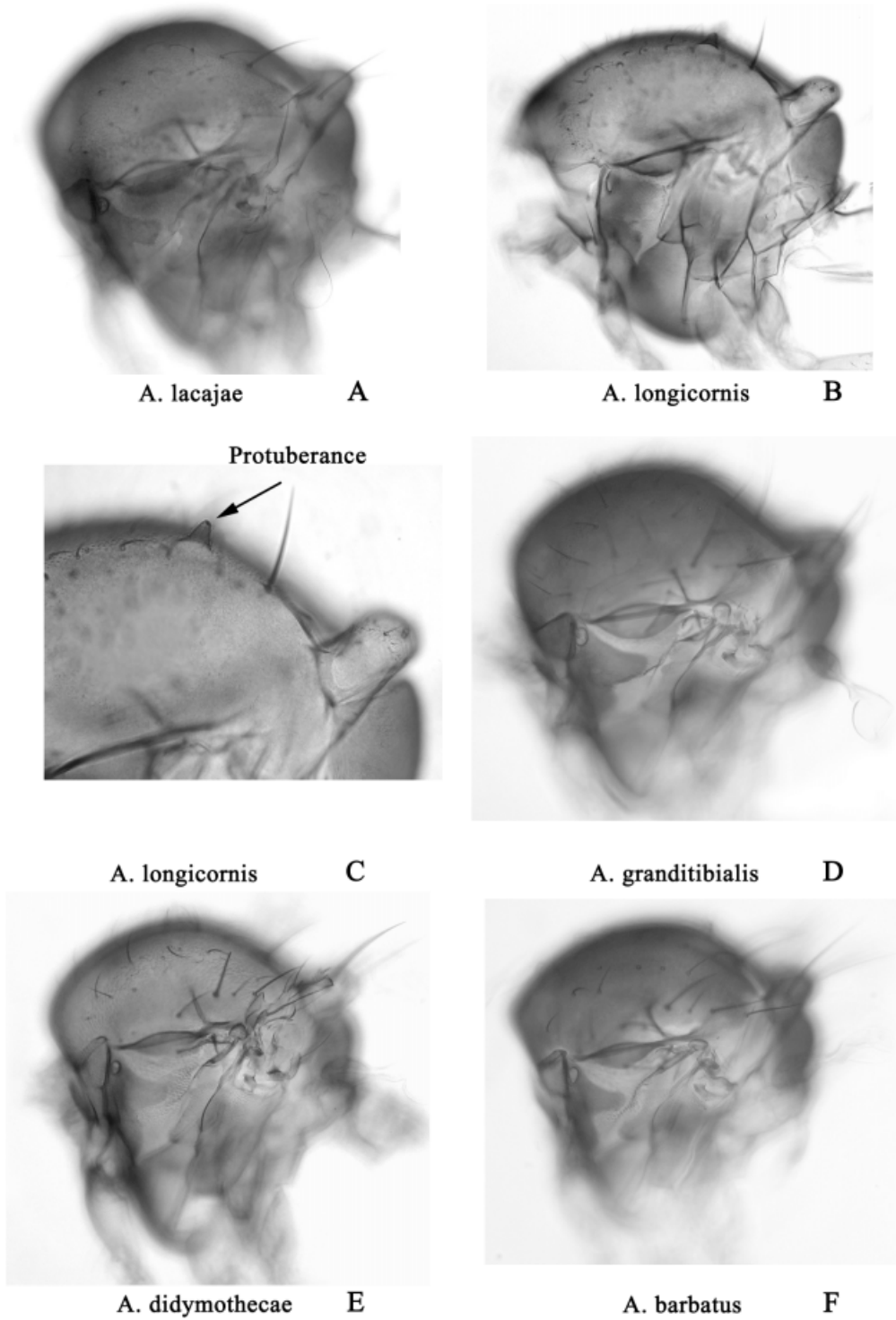


FIGURE 11. Thoraces of male *Atrichopogon*, lateral view.

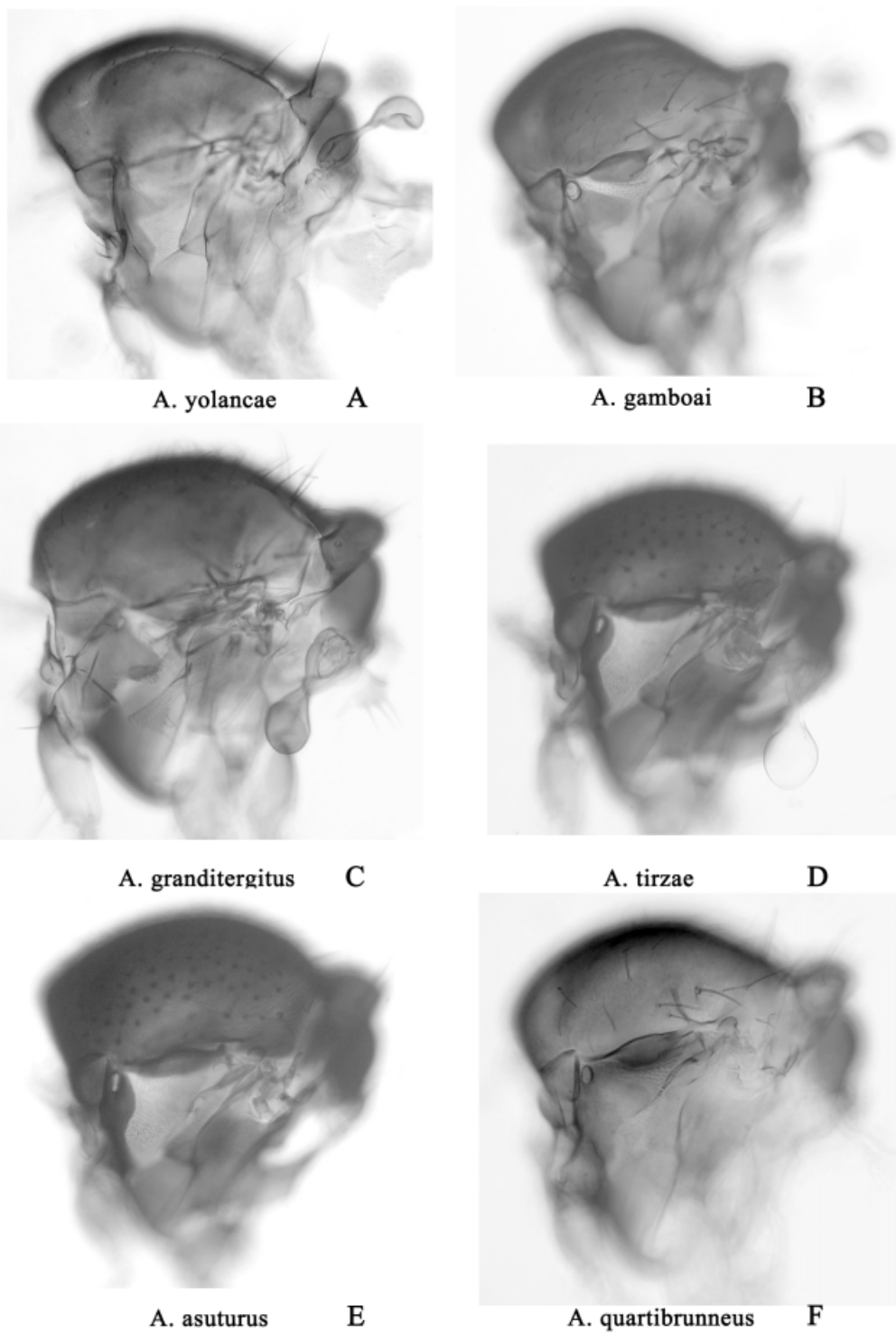


FIGURE 12. Thoraces of male *Atrichopogon*, lateral view.

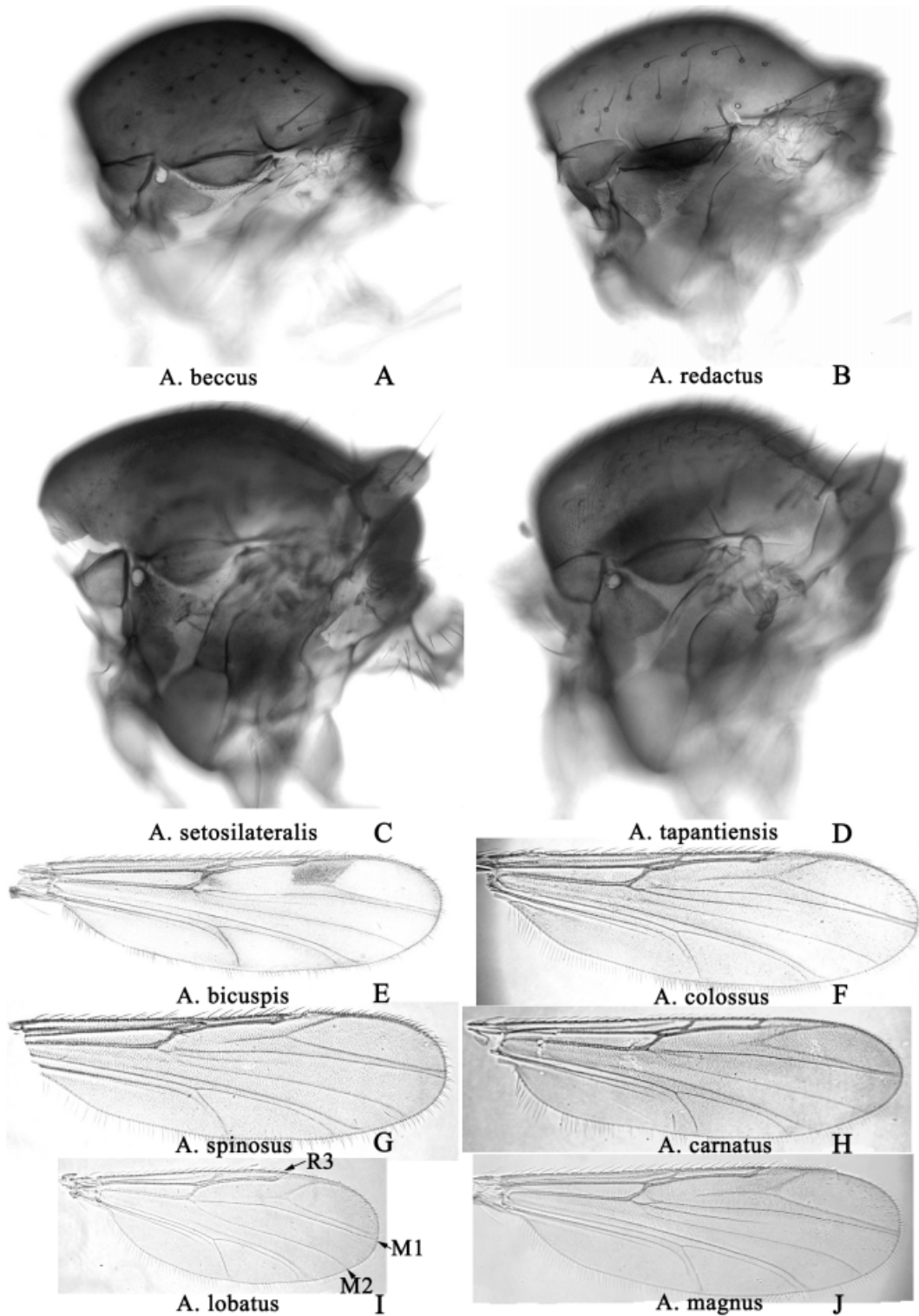


FIGURE 13. Thoraces of male *Atrichopogon* (A–D), lateral view; wings of male *Atrichopogon* (E–H).