

FIGURE 14. Wings of male *Atrichopogon*.

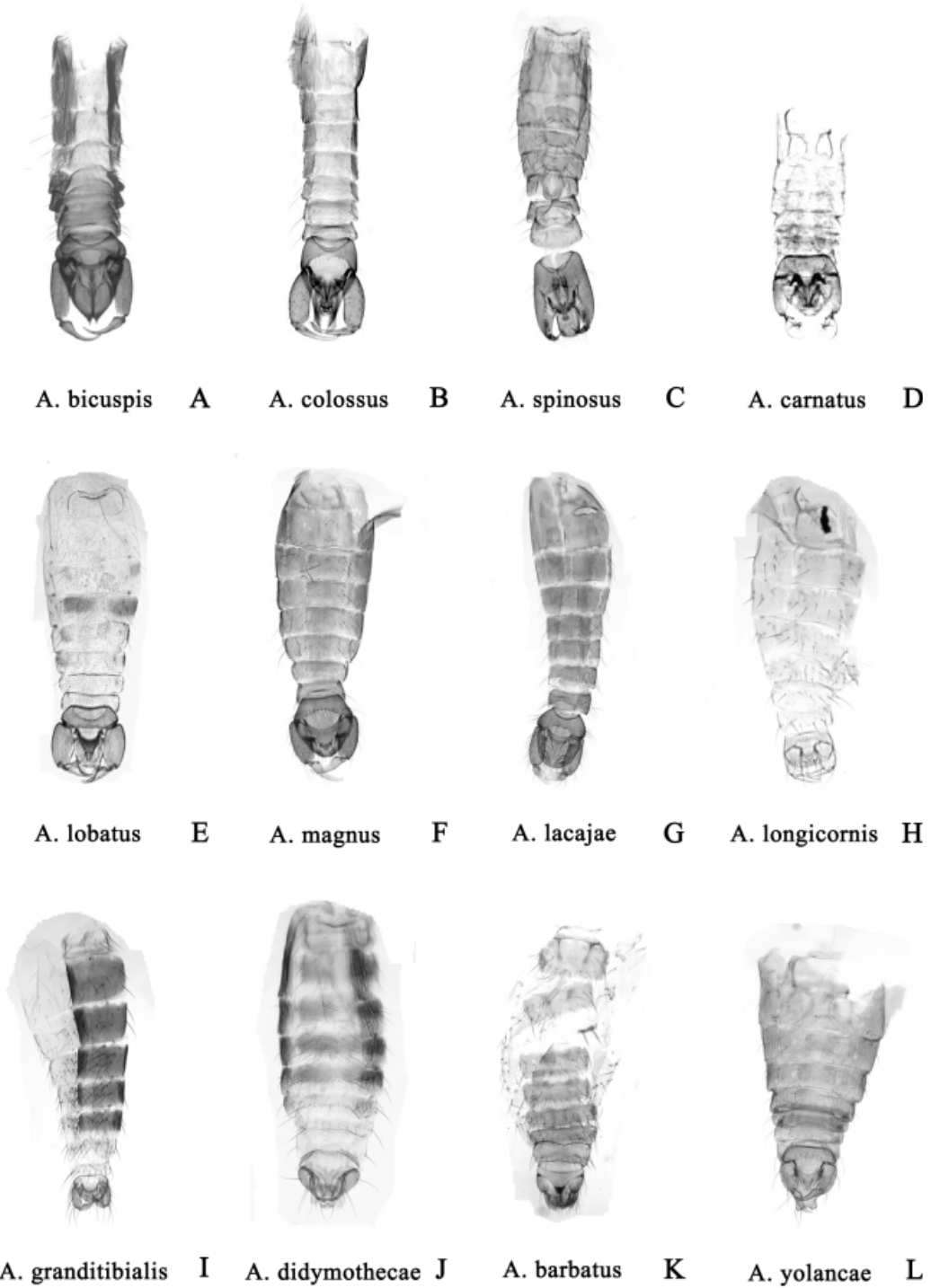
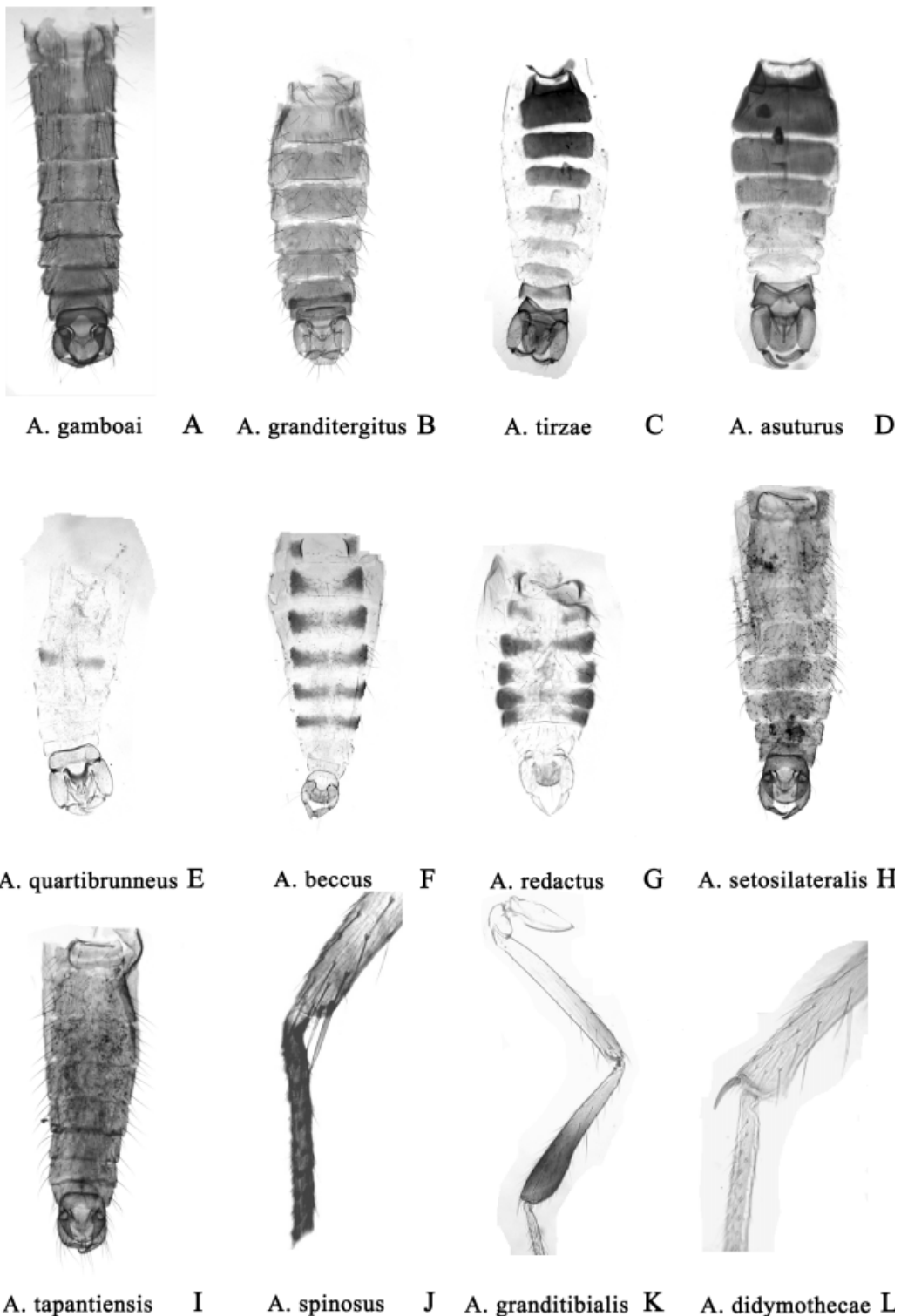


FIGURE 15. Abdomens of male *Atrichopogon*, dorsal view.



A. tapantiensis I *A. spinosus* J *A. granditibialis* K *A. didymothecae* L
FIGURE 16. Abdomens of male *Atrichopogon* (A-F), dorsal view. Tibial spurs. (G-I), anterior view.

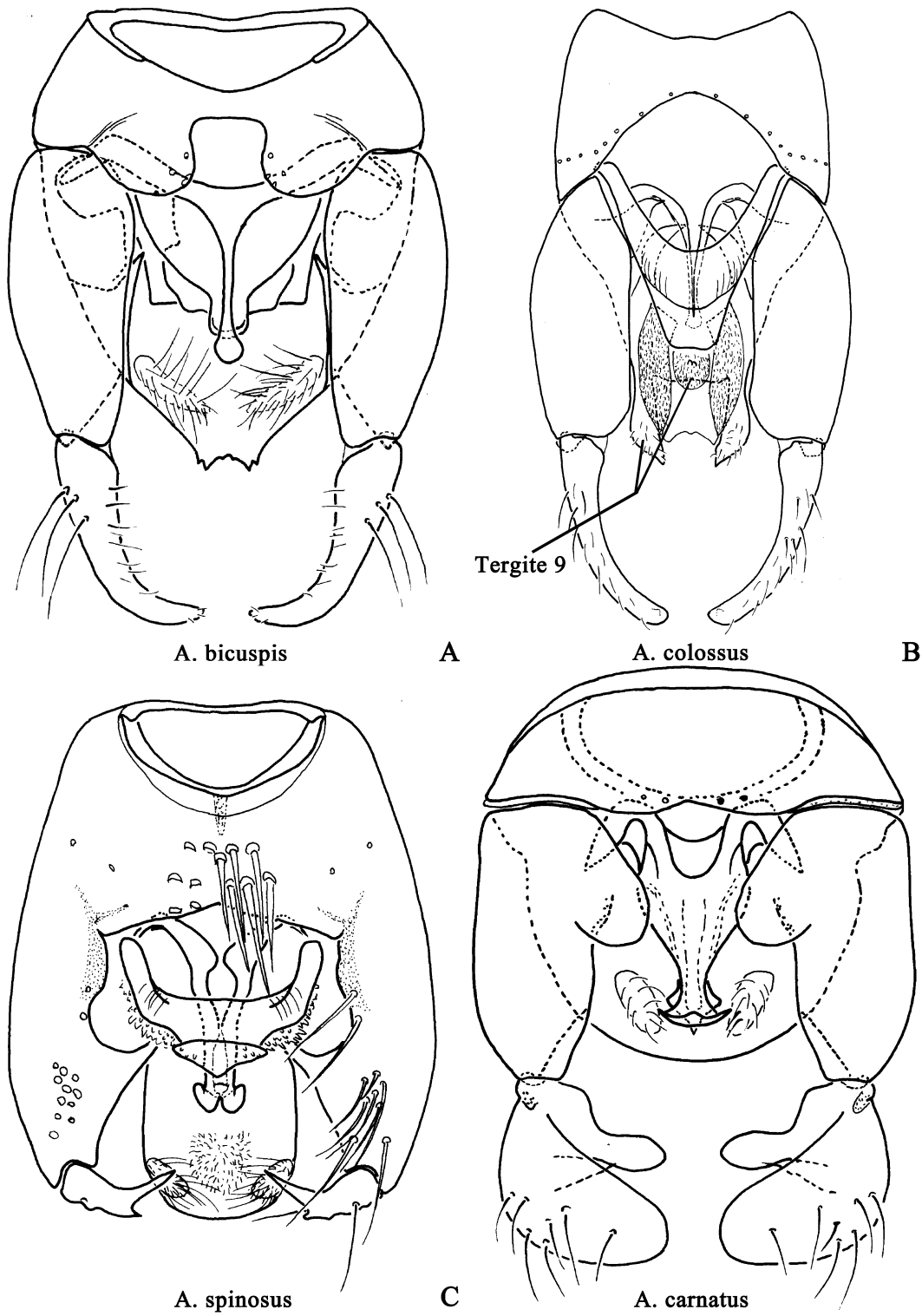


FIGURE 17. Male genitalia of *Atrichopogon*, ventral view.

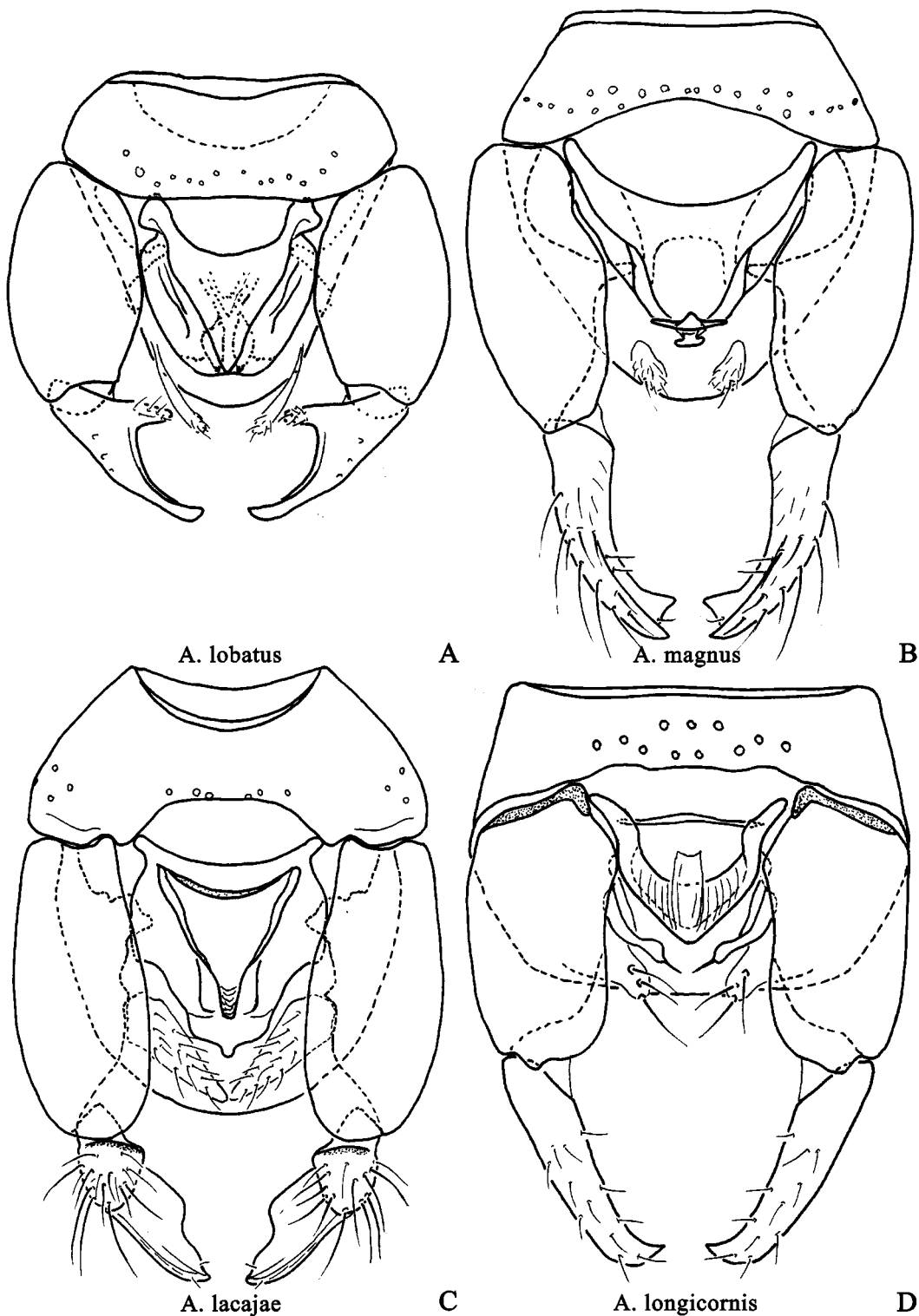
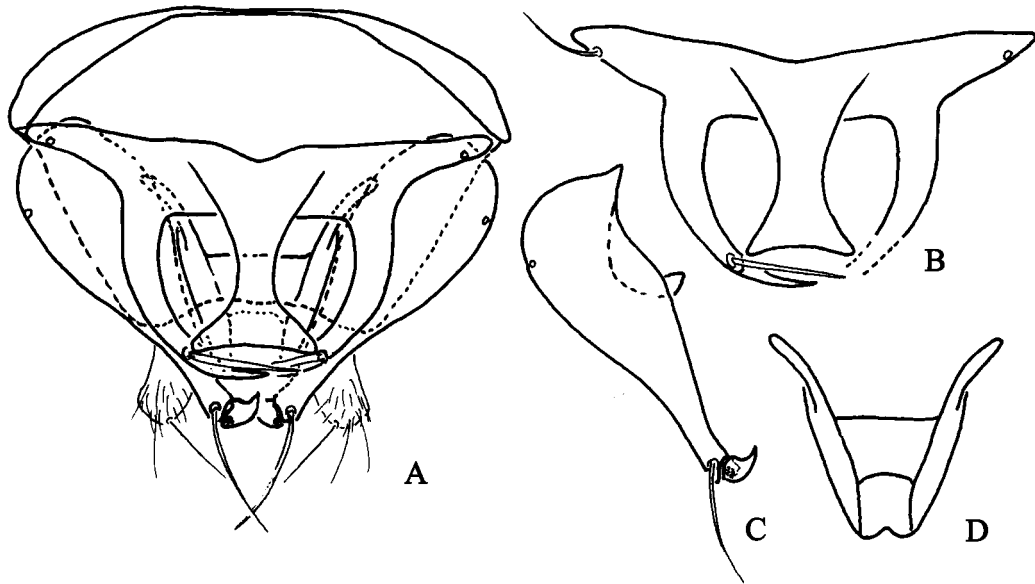
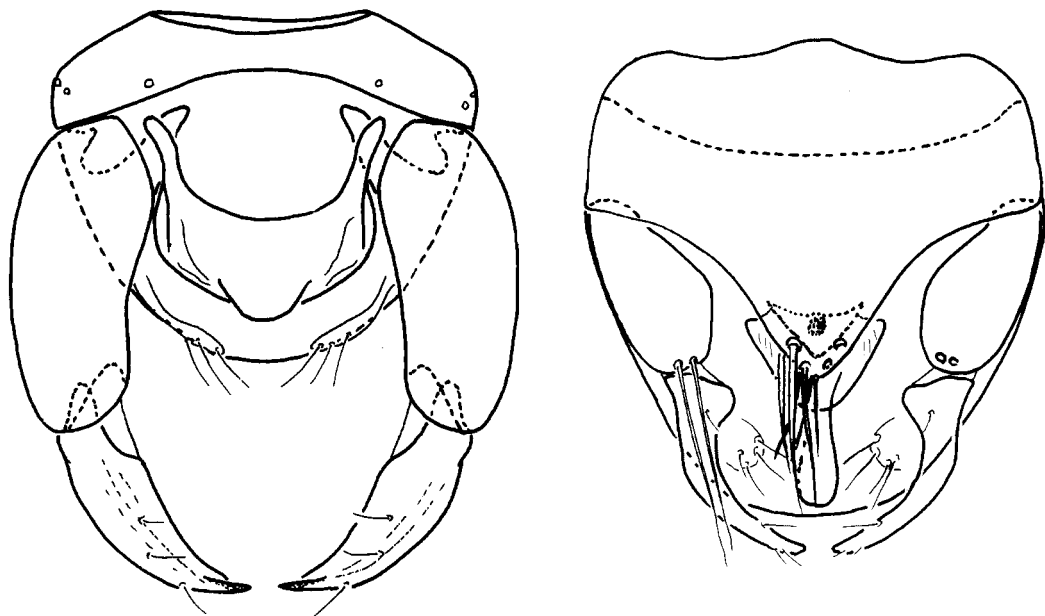


FIGURE 18. Male genitalia of *Atrichopogon*, ventral view.



A. didymothecae



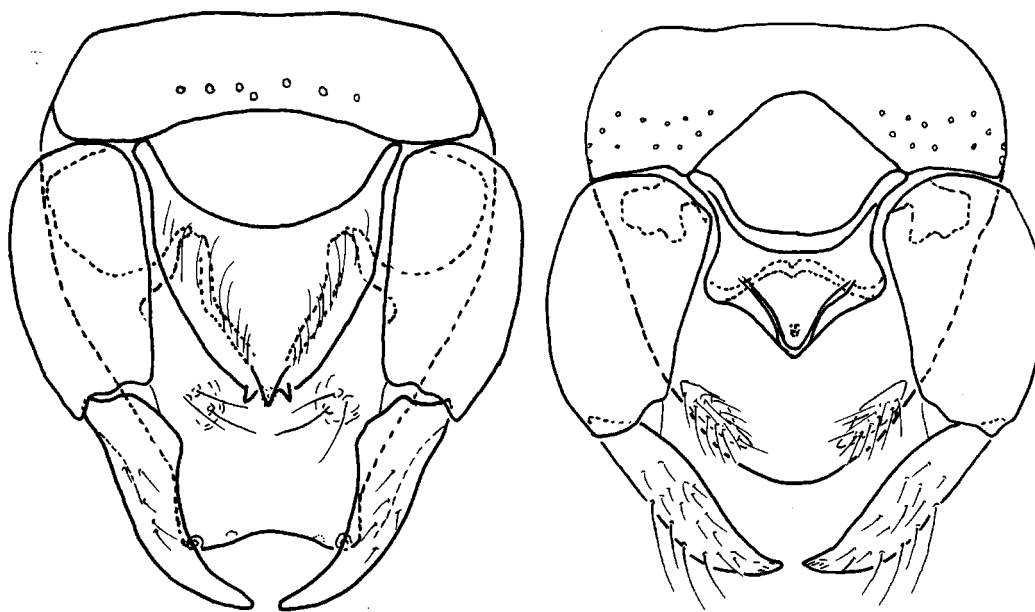
A. granditibialis

E

A. barbatus

F

FIGURE 19. Male genitalia of *Atrichopogon*, ventral view. A–D. *A. didymothecae*; B, sternite 9; C, gonocoxite and gonostylus; D, aedeagal-parameral complex.

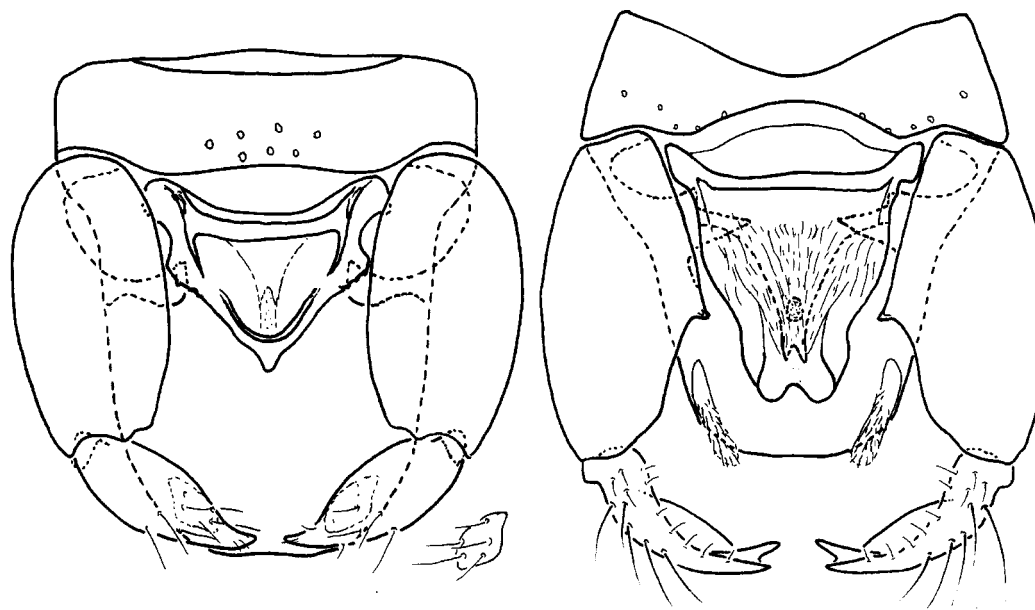


A. yolancae

A

A. gamboai

B



A. granditergitus

C

A. tirzae

D

FIGURE 20. Male genitalia of *Atrichopogon*, ventral view.

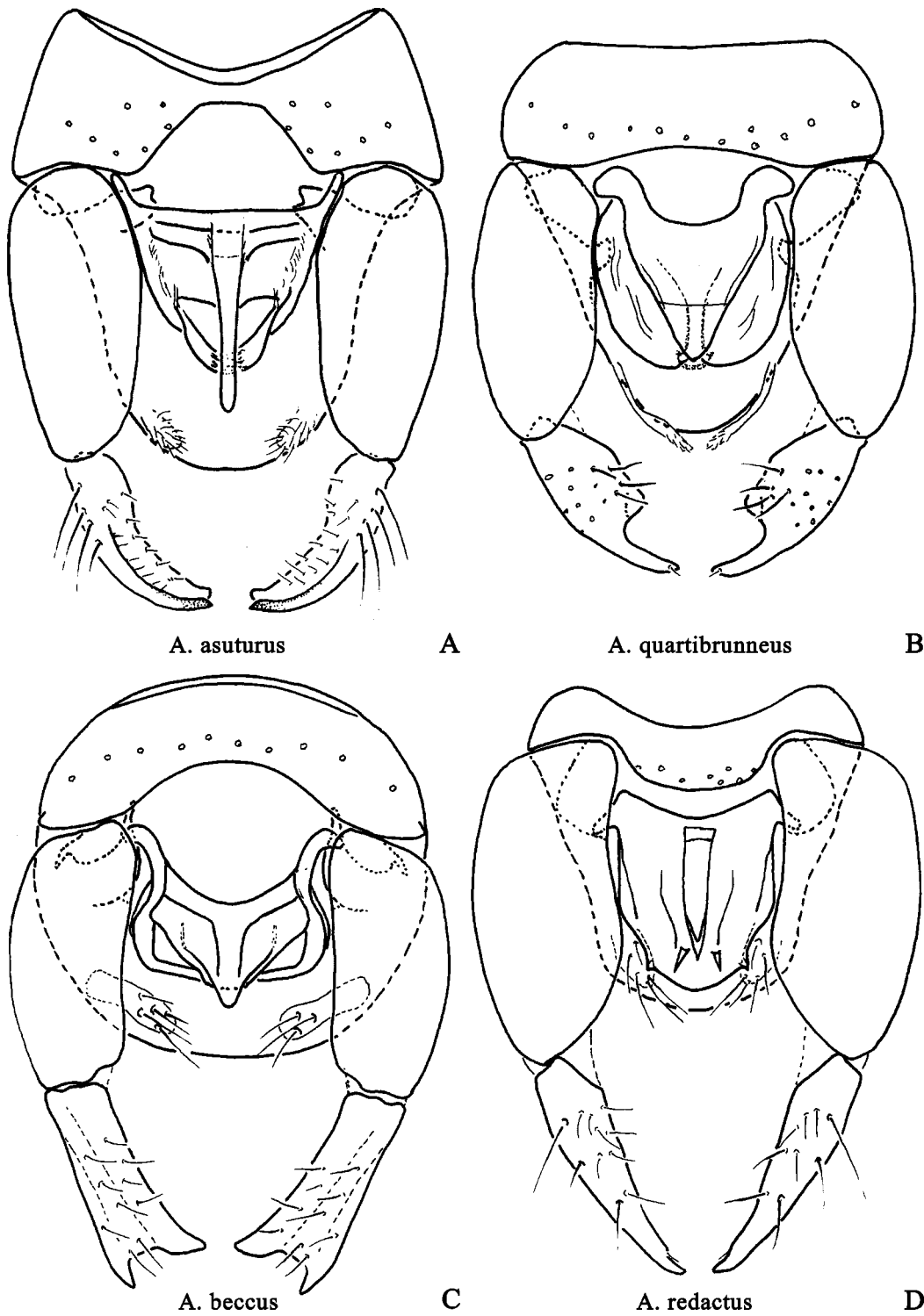


FIGURE 21. Male genitalia of *Atrichopogon*, ventral view.

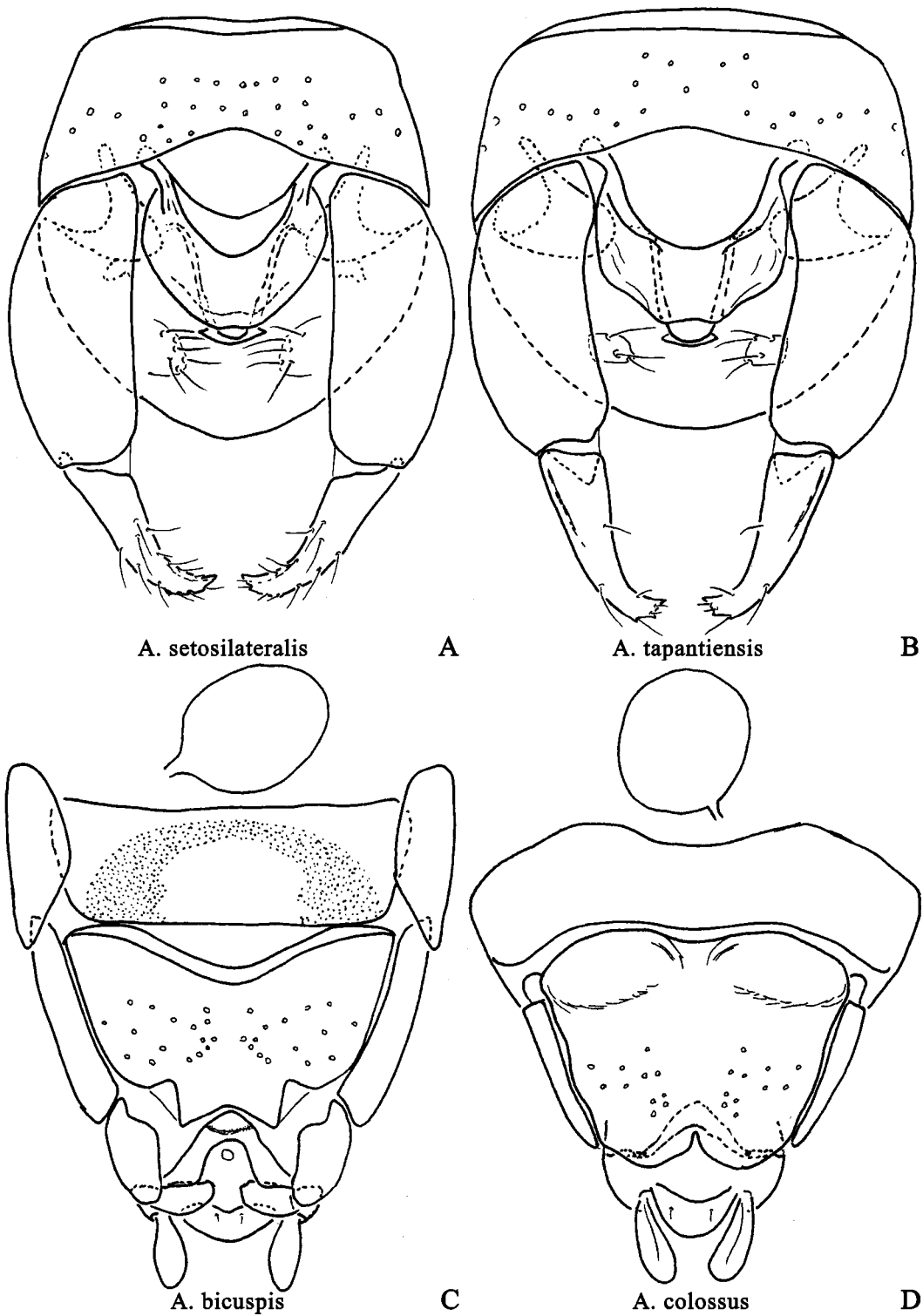


FIGURE 22. Genitalia of *Atrichopogon*, ventral view. A-B. Male. C-D. Female.

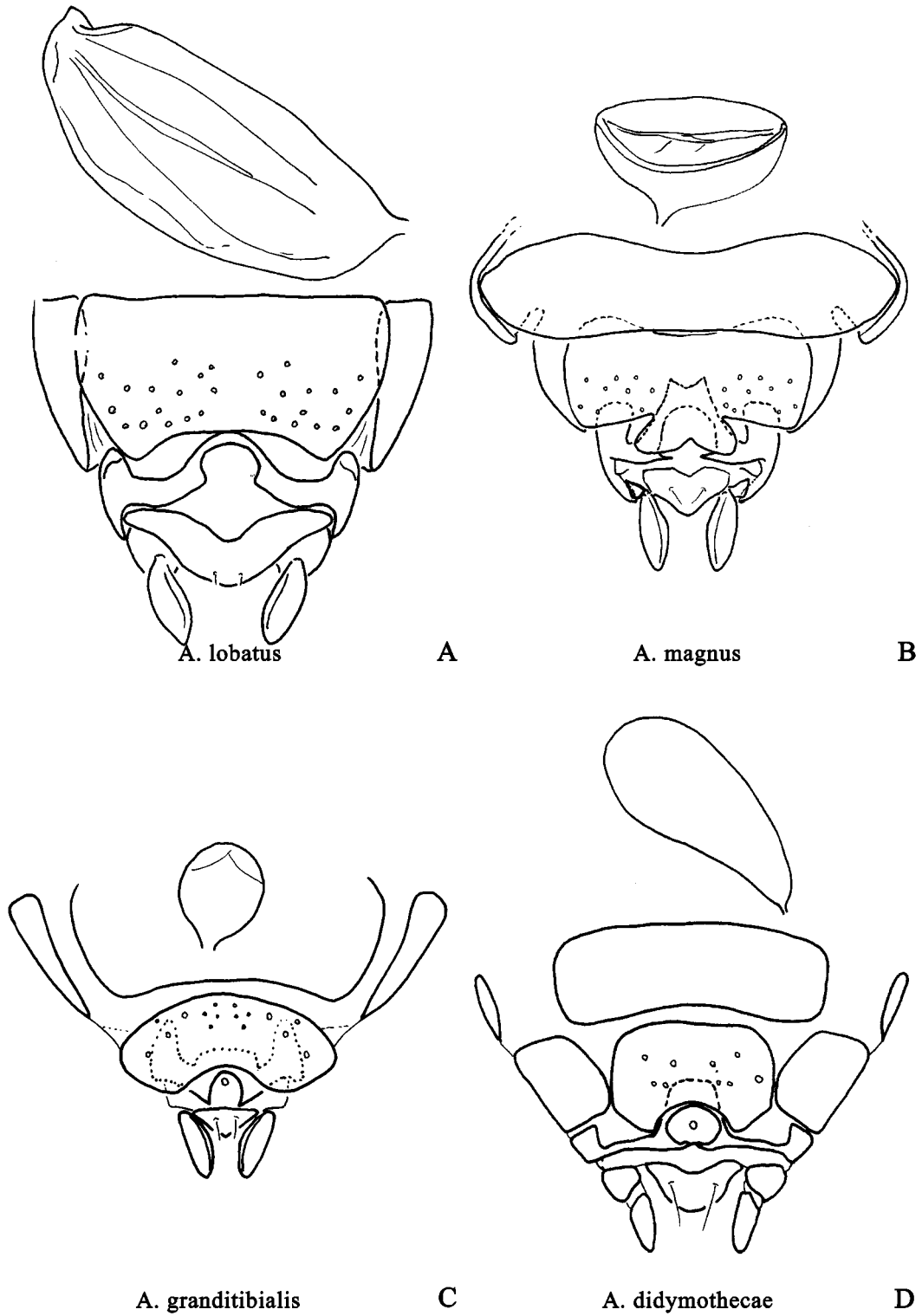


FIGURE 23. Female genitalia of *Atrichopogon*, ventral view.

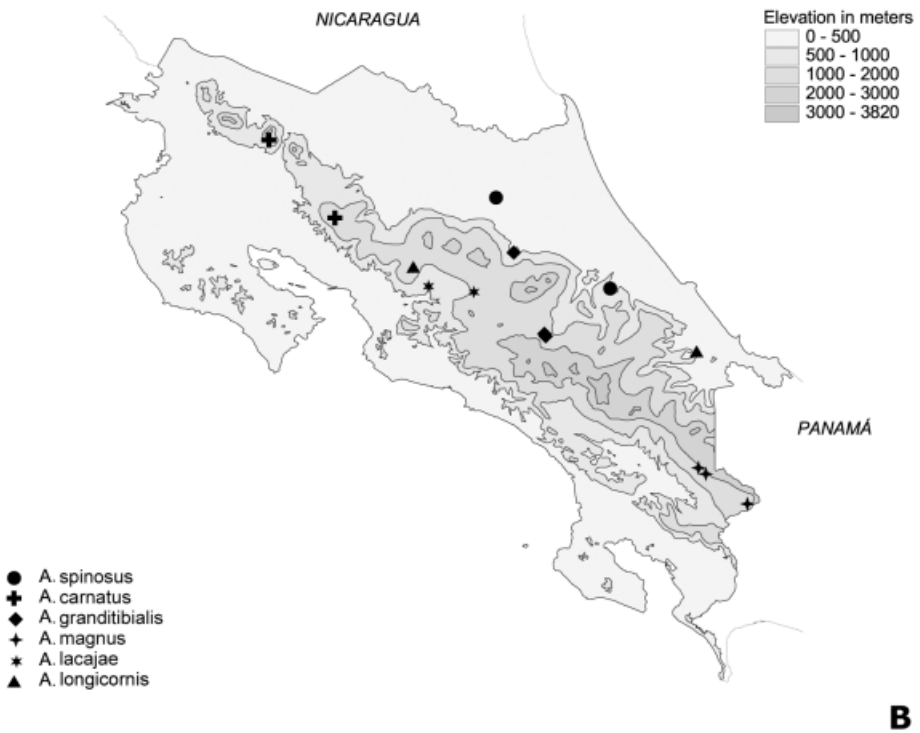
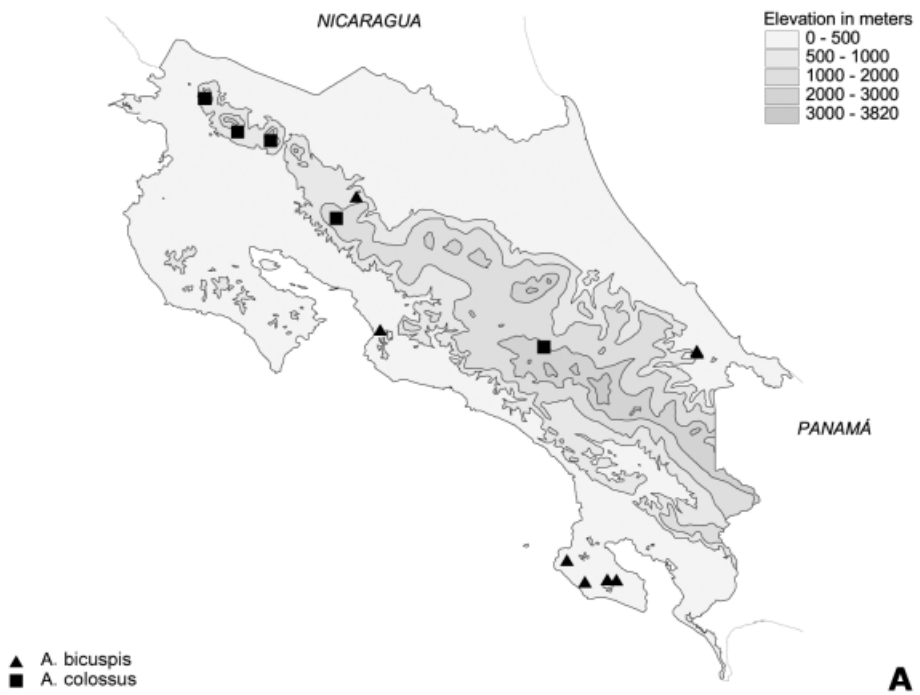


FIGURE 24. Distribution of species of *Atrichopogon*.

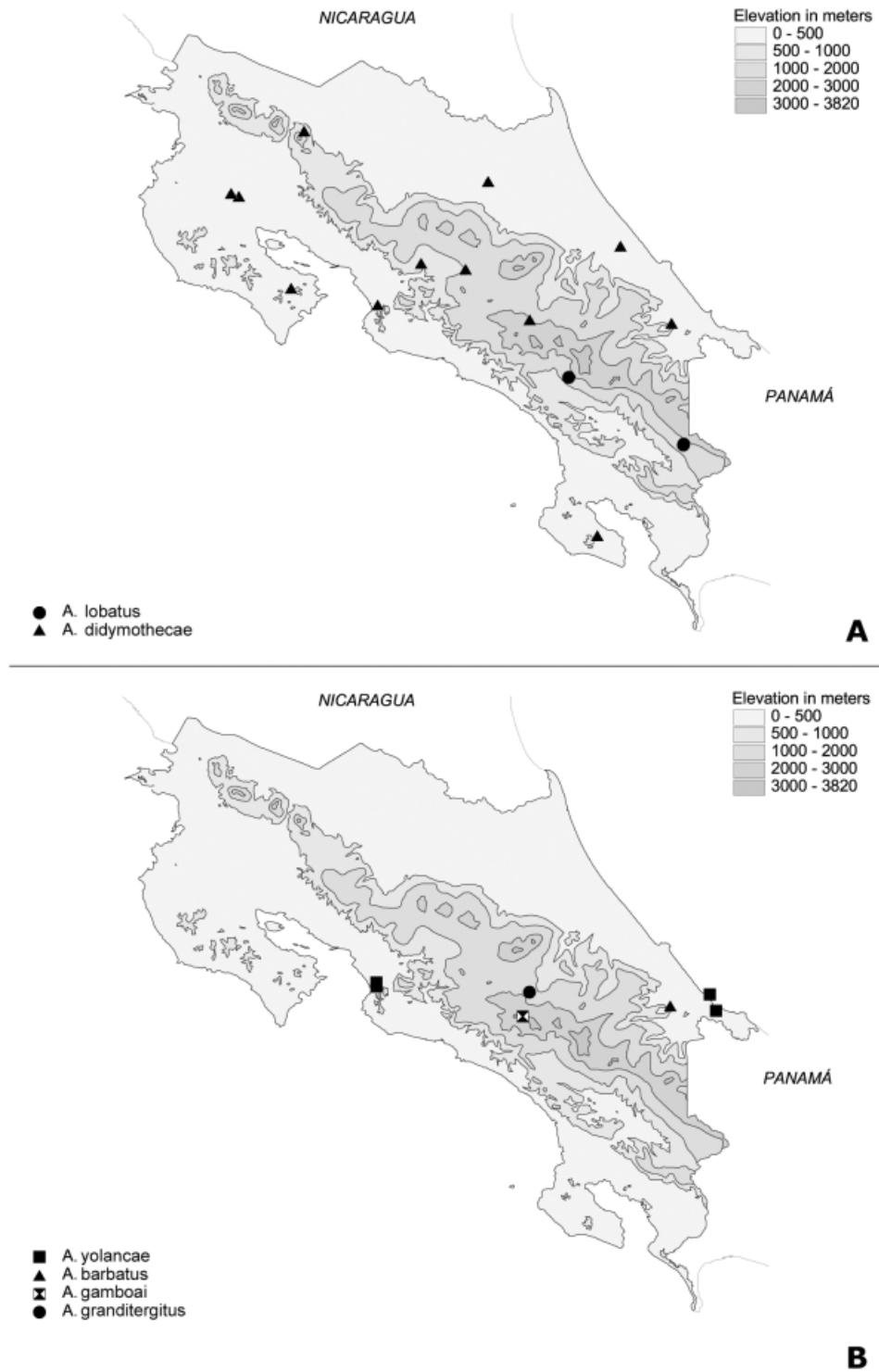


FIGURE 25. Distribution of species of *Atrichopogon*.

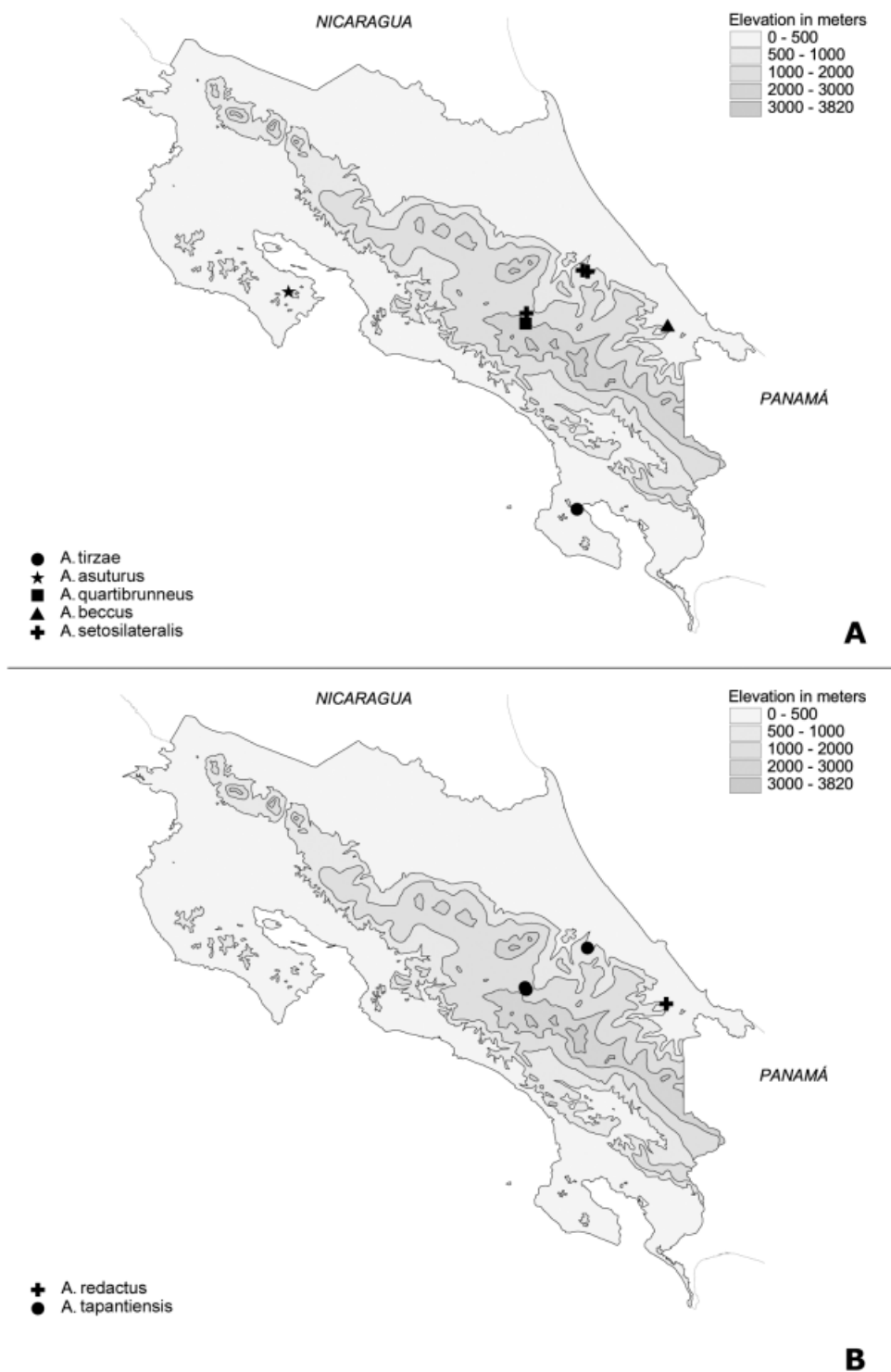


FIGURE 26. Distribution of species of *Atrichopogon*.

TABLE 1. Wing length of males of *Atrichopogon* species. Units in millimeters.

Species	n	range	mean	1.5 SD
<i>A. bicuspis</i>	10	1.01–1.16	1.10	0.08
<i>A. colossus</i>	11	1.26–1.41	1.33	0.08
<i>A. spinosus</i>	2	0.92–0.94	0.93	-
<i>A. carnatus</i>	11	0.96–1.09	1.02	0.05
<i>A. lobatus</i>	6	0.94–1.11	1.02	-
<i>A. magnus</i>	3	1.36–1.41	1.39	-
<i>A. lacajae</i>	1	1.18–1.26	1.22	-
<i>A. longicornis</i>	2	0.97	0.97	-
<i>A. granditibialis</i>	13	1.00–1.19	1.09	0.07
<i>A. didymothecae</i>	16	0.67–0.84	0.75	0.06
<i>A. barbatus</i>	1	0.79	0.79	-
<i>A. yolancae</i>	10	0.74–0.84	0.80	0.05
<i>A. gamboai</i>	2	1.71–1.73	1.72	-
<i>A. granditergitus</i>	2	0.87–0.92	0.89	-
<i>A. tirzae</i>	1	0.94	0.94	-
<i>A. asuturus</i>	3	1.00–1.01	0.99	-
<i>A. quartibrunneus</i>	1	0.96	0.96	-
<i>A. beccus</i>	1	1.19	1.18	-
<i>A. redactus</i>	1	0.72	0.71	-
<i>A. setosilateralis</i>	4	1.39–1.63	1.54	-
<i>A. tapantiensis</i>	10	1.19–1.39	1.29	0.09

TABLE 2. Costal ratio (length of costa/ wing length) of males of *Atrichopogon* species.

Species	n	range	mean	1.5 SD
<i>A. bicuspis</i>	10	0.65–0.68	0.67	0.018
<i>A. colossus</i>	11	0.62–0.66	0.64	0.021
<i>A. spinosus</i>	2	0.65–0.66	0.65	-
<i>A. carnatus</i>	11	0.61–0.67	0.64	0.025
<i>A. lobatus</i>	6	0.64–0.68	0.66	-
<i>A. magnus</i>	3	0.63–0.66	0.64	-
<i>A. lacajae</i>	1	0.60–0.63	0.62	-
<i>A. longicornis</i>	2	0.66–0.67	0.67	-
<i>A. granditibialis</i>	13	0.64–0.68	0.66	0.018
<i>A. didymothecae</i>	16	0.58–0.65	0.61	0.029
<i>A. barbatus</i>	1	0.59	0.59	-
<i>A. yolancae</i>	10	0.67–0.71	0.69	0.020
<i>A. gamboai</i>	2	0.69–0.70	0.69	-
<i>A. granditergitus</i>	2	0.65–0.66	0.65	-
<i>A. tirzae</i>	1	0.71	0.71	-
<i>A. asuturus</i>	3	0.68–0.71	0.69	-
<i>A. quartibrunneus</i>	1	0.64	0.64	-
<i>A. beccus</i>	1	0.67	0.67	-
<i>A. redactus</i>	1	0.62	0.62	-
<i>A. setosilateralis</i>	4	0.70–0.73	0.72	-
<i>A. tapantiensis</i>	10	0.69–0.72	0.71	0.020

TABLE 3. Head width/ mouthpart length of males of *Atrichopogon* species.

Species	n	range	mean	1.5 SD
<i>A. bicuspis</i>	8	1.81–2.08	1.97	0.153
<i>A. colossus</i>	11	1.45–1.65	1.53	0.084
<i>A. spinosus</i>	2	1.36–1.55	1.46	-
<i>A. carnatus</i>	9	1.87–2.25	2.11	0.189
<i>A. lobatus</i>	5	1.88–2.07	1.96	-
<i>A. magnus</i>	2	1.48–1.59	1.53	-
<i>A. lacajae</i>	1	1.53	1.53	-
<i>A. longicornis</i>	1	2.37	2.37	-
<i>A. granditibialis</i>	12	1.94–2.25	2.09	0.153
<i>A. didymothecae</i>	15	1.53–1.79	1.63	0.123
<i>A. barbatus</i>	1	2.28	2.28	-
<i>A. yolancae</i>	8	2.50–3.10	2.75	0.346
<i>A. gamboai</i>	2	1.74–1.87	1.80	-
<i>A. granditergitus</i>	2	1.93–2.07	2.00	-
<i>A. tirzae</i>	1	2.09	2.09	-
<i>A. asuturus</i>	3	1.95–1.97	1.97	-
<i>A. quartibrunneus</i>	1	2.23	2.23	-
<i>A. beccus</i>	1	2.11	2.11	-
<i>A. redactus</i>	1	2.21	2.21	-
<i>A. setosilateralis</i>	4	1.13–1.23	1.18	-
<i>A. tapantiensis</i>	8	1.21–1.52	1.33	0.133

TABLE 4. Antennal ratio (lengths of flagellomeres 10–13/1–9) of males of *Atrichopogon* species.

Species	n	range	mean	1.5 SD
<i>A. bicuspis</i>	10	0.74–0.80	0.76	0.030
<i>A. colossus</i>	11	0.74–0.88	0.83	0.055
<i>A. spinosus</i>	2	0.89–0.93	0.91	-
<i>A. carnatus</i>	9	0.78–0.94	0.87	0.068
<i>A. lobatus</i>	5	0.65–0.89	0.76	-
<i>A. magnus</i>	3	0.78–0.94	0.85	-
<i>A. lacajae</i>	1	0.72	0.73	-
<i>A. longicornis</i>	2	0.67–0.70	0.68	-
<i>A. granditibialis</i>	13	0.65–0.73	0.69	0.040
<i>A. didymothecae</i>	17	0.65–0.81	0.74	0.055
<i>A. barbatus</i>	1	0.68	0.68	-
<i>A. yolancae</i>	10	0.83–0.97	0.90	0.054
<i>A. gamboai</i>	2	0.64–0.68	0.66	-
<i>A. granditergitus</i>	1	1.12	1.12	-
<i>A. tirzae</i>	1	0.48	0.48	-
<i>A. asuturus</i>	3	0.62–0.66	0.64	-
<i>A. quartibrunneus</i>	1	0.69	0.69	-
<i>A. beccus</i>	1	0.72	0.72	-
<i>A. redactus</i>	1	1.12	1.12	-
<i>A. setosilateralis</i>	4	1.84–2.05	1.94	-
<i>A. tapantiensis</i>	10	0.94–1.14	1.06	0.088

TABLE 5. Flagellomere 9/10 of males of *Atrichopogon* species.

Species	n	range	mean	1.5 SD
<i>A. bicuspis</i>	10	0.76–0.91	0.80	0.068
<i>A. colossus</i>	11	0.56–0.68	0.61	0.050
<i>A. spinosus</i>	2	0.74–0.75	0.74	-
<i>A. carnatus</i>	11	0.40–0.75	0.66	0.144
<i>A. lobatus</i>	6	0.92–0.93	0.93	-
<i>A. magnus</i>	3	0.56–0.63	0.60	-
<i>A. lacajae</i>	1	0.71	0.71	-
<i>A. longicornis</i>	1	0.57–0.67	0.62	-
<i>A. granditibialis</i>	13	0.83–0.94	0.90	0.067
<i>A. didymothecae</i>	17	0.56–0.71	0.63	0.066
<i>A. barbatus</i>	1	0.94	0.94	-
<i>A. yolancae</i>	10	0.71–0.92	0.79	0.091
<i>A. gamboai</i>	2	0.56–0.58	0.57	-
<i>A. granditergitus</i>	2	0.58–0.70	0.64	-
<i>A. tirzae</i>	1	0.97	0.97	-
<i>A. asuturus</i>	3	0.97–1.07	1.02	-
<i>A. quartibrunneus</i>	1	0.93	0.93	-
<i>A. beccus</i>	1	0.73	0.73	-
<i>A. redactus</i>	-	-	-	-
<i>A. setosilateralis</i>	4	0.61–0.63	0.62	-
<i>A. tapantiensis</i>	10	0.65–0.80	0.71	0.077

TABLE 6. Gonocoxite length/width of males of *Atrichopogon* species.

Species	n	range	mean	1.5 SD
<i>A. bicuspis</i>	10	2.32–3.09	2.74	0.339
<i>A. colossus</i>	11	2.43–3.23	2.87	0.311
<i>A. spinosus</i>	2	2.22–2.56	2.39	-
<i>A. carnatus</i>	12	2.16–2.64	2.37	0.186
<i>A. lobatus</i>	6	1.77–2.00	1.90	-
<i>A. magnus</i>	3	2.37–2.44	2.39	-
<i>A. lacajae</i>	1	2.25	2.25	-
<i>A. longicornis</i>	2	1.92–1.96	1.94	-
<i>A. granditibialis</i>	13	2.22–2.86	2.48	0.269
<i>A. didymothecae</i>	17	4.89–6.86	5.85	0.995
<i>A. barbatus</i>	1	1.71	1.71	-
<i>A. yolancae</i>	10	1.78–2.06	1.93	0.142
<i>A. gamboai</i>	2	1.77–2.07	1.92	-
<i>A. granditergitus</i>	2	1.96–2.10	2.03	-
<i>A. tirzae</i>	1	2.34	2.34	-
<i>A. asuturus</i>	3	2.46–2.54	2.50	-
<i>A. quartibrunneus</i>	1	2.23	2.23	-
<i>A. beccus</i>	1	2.29	2.29	-
<i>A. redactus</i>	1	2.50	2.50	-
<i>A. setosilateralis</i>	4	2.37–2.48	2.44	-
<i>A. tapantiensis</i>	10	2.13–2.60	2.43	0.243

TABLE 7. Wing length of females of *Atrichopogon* species. Units in millimeters.

Species	n	range	mean	1.5 SD
<i>A. bicuspis</i>	3	1.14–1.26	1.20	-
<i>A. colossus</i>	4	1.24–1.44	1.32	-
<i>A. lobatus</i>	1	1.26	1.26	-
<i>A. magnus</i>	2	1.46–1.53	1.50	-
<i>A. longicornis</i>	1	0.95	0.95	-
<i>A. granditibialis</i>	1	1.14	1.14	-
<i>A. didymothecae</i>	11	0.82–0.92	0.84	0.043

TABLE 8. Costal ratio (length of costa/ wing length) of females of *Atrichopogon* species.

Species	n	range	mean	1.5 SD
<i>A. bicuspis</i>	3	0.67–0.71	0.68	-
<i>A. colossus</i>	4	0.65–0.66	0.65	-
<i>A. lobatus</i>	1	0.65	0.65	-
<i>A. magnus</i>	2	0.64	0.64	-
<i>A. longicornis</i>	1	0.66	0.66	1
<i>A. granditibialis</i>	1	0.67	0.67	-
<i>A. didymothecae</i>	11	0.59–0.65	0.61	0.026

TABLE 9. Head width/ mouthpart length of females of *Atrichopogon* species.

Species	n	range	mean
<i>A. bicuspis</i>	3	0.50–0.58	0.53
<i>A. colossus</i>	4	0.68–0.70	0.69
<i>A. lobatus</i>	1	0.57	0.57
<i>A. magnus</i>	2	0.69–0.70	0.70
<i>A. longicornis</i>	1	0.34	0.34
<i>A. granditibialis</i>	1	0.54	0.54
<i>A. didymothecae</i>	7	0.55–0.66	0.63

TABLE 10. Antennal ratio (lengths of flagellomeres 9–13/1–8) of females of *Atrichopogon* species.

Species	n	range	mean	1.5 SD
<i>A. bicuspis</i>	3	1.33–1.60	1.43	-
<i>A. colossus</i>	1	1.61	1.61	-
<i>A. lobatus</i>	1	1.18	1.18	-
<i>A. magnus</i>	2	1.37–1.43	1.40	-
<i>A. longicornis</i>	1	1.75	1.75	-
<i>A. granditibialis</i>	1	1.38	1.38	-
<i>A. didymothecae</i>	11	1.09–1.36	1.28	0.11

TABLE 11. Length of spermatheca of females of *Atrichopogon* species. Units in microns.

Species	n	range	mean	1.5 SD
<i>A. bicuspis</i>	3	89–111	99	-
<i>A. colossus</i>	4	111–155	134	-
<i>A. lobatus</i>	1	86	86	-
<i>A. magnus</i>	2	182–192	187	-
<i>A. longicornis</i>	1	70	70	-
<i>A. granditibialis</i>	1	59	59	-
<i>A. didymothecae</i>	10	25–54	46	13.156